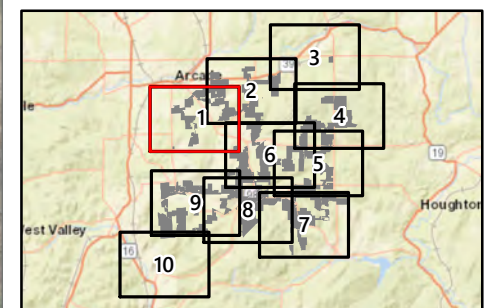


Alle-Catt Wind Farm

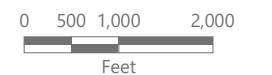
Towns of Arcade, Centerville, Farmersville, Freedom, and Rushford Allegany, Cattaraugus, and Wyoming Counties, New York

Certificate Amendment
Case No. 17-F-0282

- Delineated Stream Line
- Delineated Stream
- Delineated Wetland
- NYSDEC Adjacent Area
- WTG
- Collection Line
- Access Road
- ADLS Pad
- Intersection Improvement
- Facility Site (See Note 1)

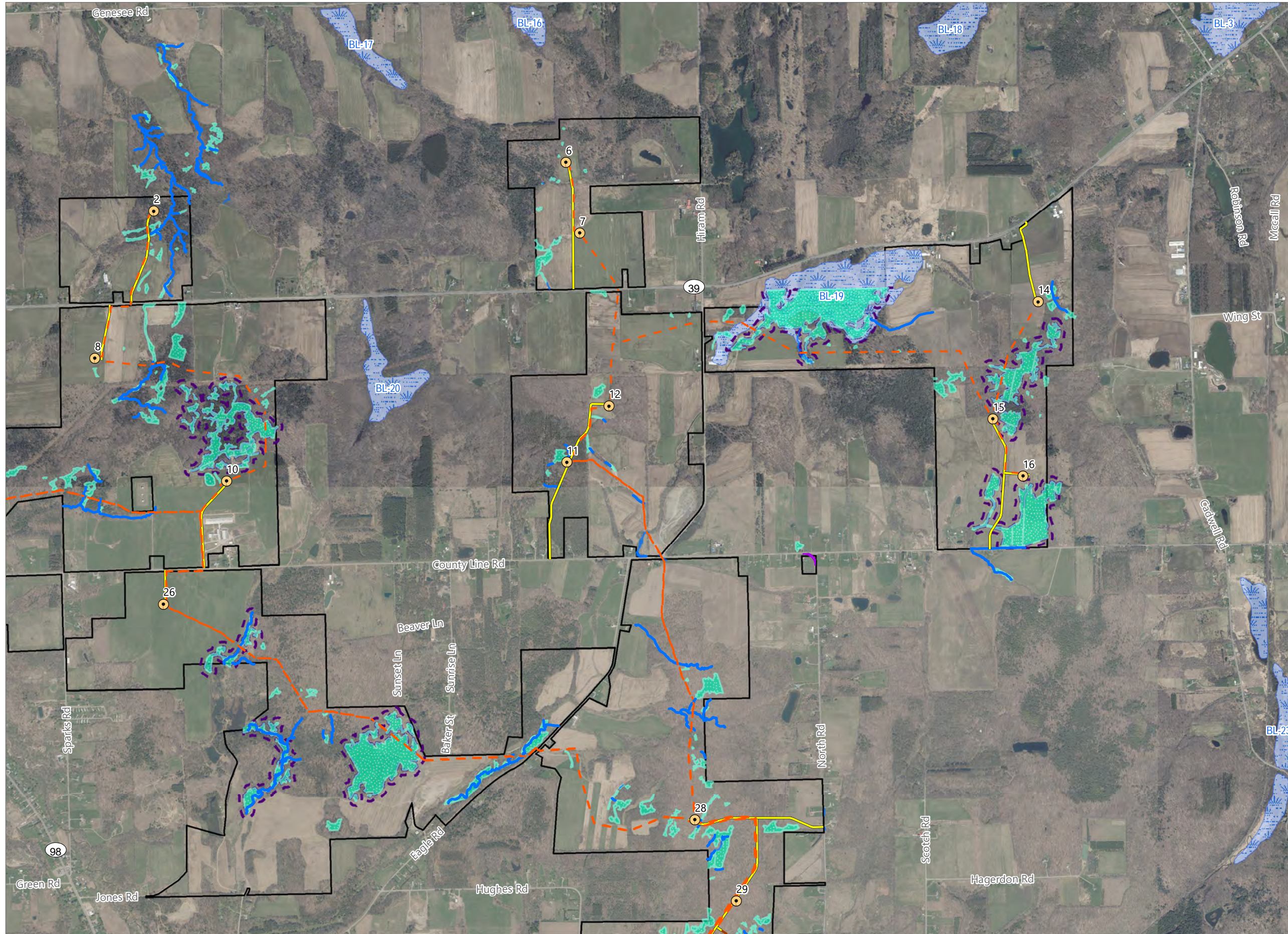


Sheet 1 of 10



Prepared January 23, 2023
(1) Facility Site Boundary based on County GIS dataset.
Basemap: NYS DOP "2020-2021" orthoimagery map service

Figure 8: Updated Figure 22-2. Delineated Wetlands

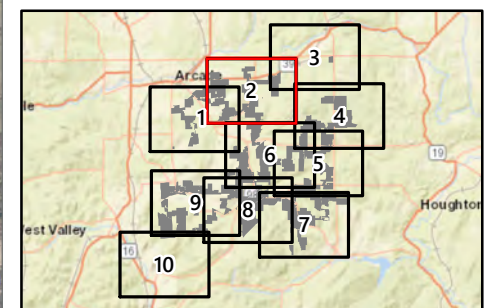


Alle-Catt Wind Farm

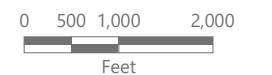
Towns of Arcade, Centerville, Farmersville, Freedom, and Rushford Allegany, Cattaraugus, and Wyoming Counties, New York

Certificate Amendment
Case No. 17-F-0282

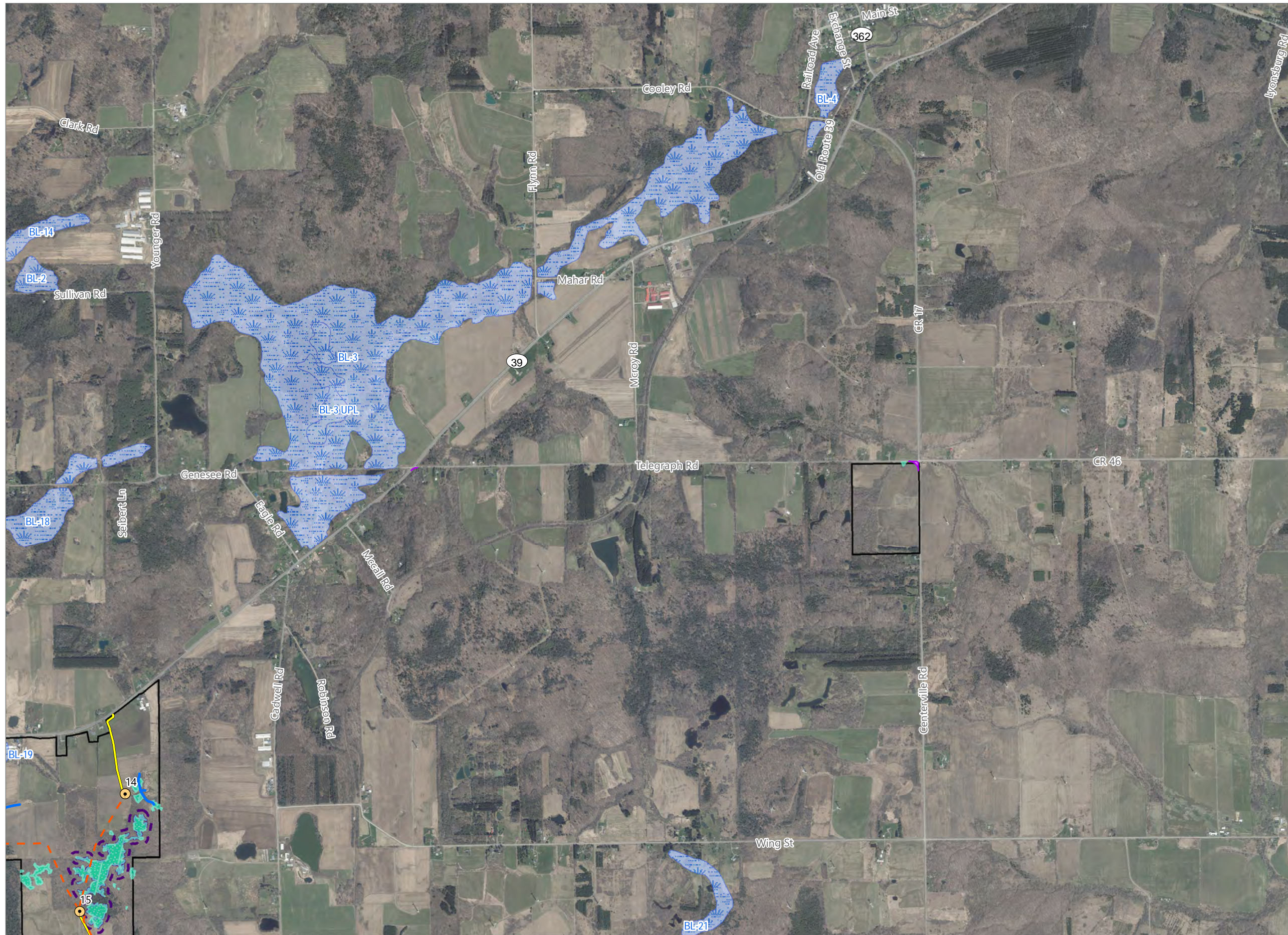
- Delineated Stream Line
- Delineated Stream
- Delineated Wetland
- NYSDEC Adjacent Area
- WTG
- Collection Line
- Access Road
- Identiflight Pad
- Intersection Improvement
- Facility Site (See Note 1)



Sheet 2 of 10











Prepared January 23, 2023
(1) Facility Site Boundary based on County GIS dataset.
Basemap: NYS DOP "2020-2021" orthoimagery map service

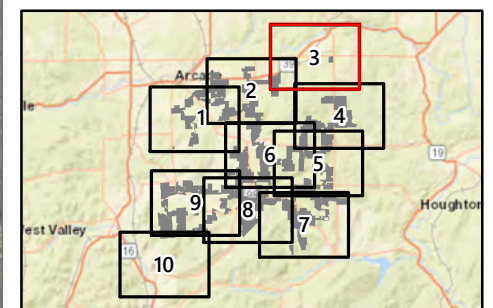


Alle-Catt Wind Farm

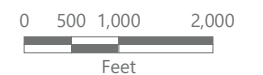
Towns of Arcade, Centerville, Farmersville, Freedom, and Rushford Allegany, Cattaraugus, and Wyoming Counties, New York

Certificate Amendment
Case No. 17-F-0282

-  Delineated Stream Line
-  Delineated Wetland
-  NYSDEC Adjacent Area
-  WTG
-  Collection Line
-  Access Road
-  Intersection Improvement
-  Facility Site (See Note 1)

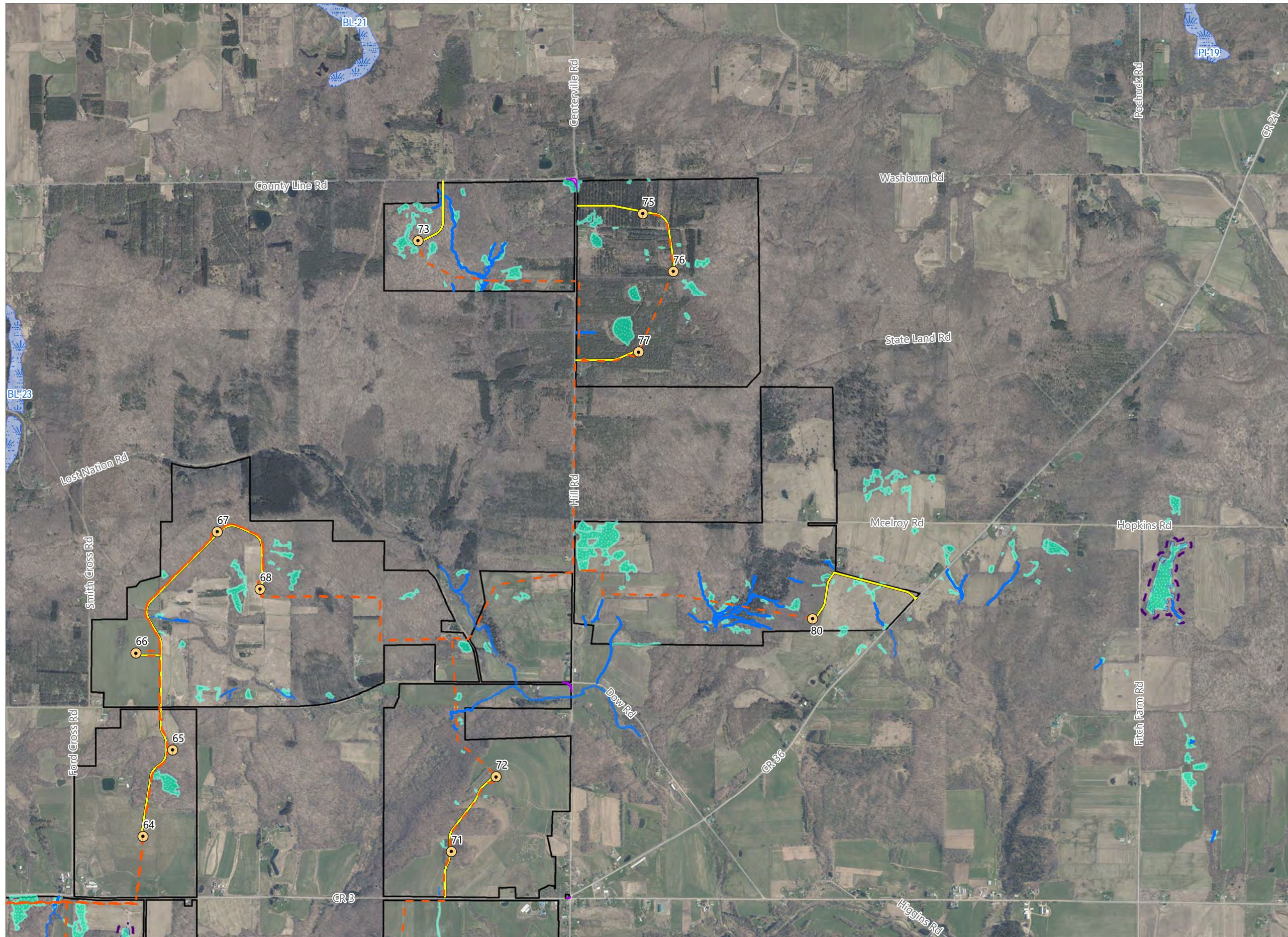


Sheet 3 of 10



Prepared January 23, 2023
(1) Facility Site Boundary based on County GIS dataset.
Basemap: NYS DOP "2020-2021" orthoimagery map service










Figure 8: Updated Figure 22-2. Delineated Wetlands

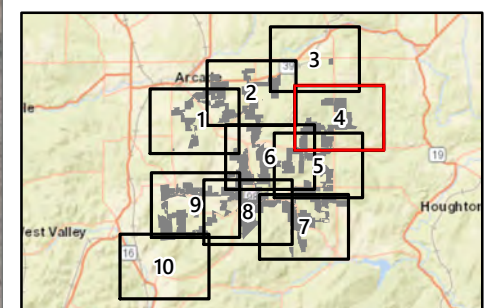


Alle-Catt Wind Farm

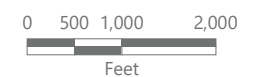
Towns of Arcade, Centerville, Farmersville, Freedom, and Rushford
Allegany, Cattaraugus, and Wyoming
Counties, New York

Certificate Amendment
Case No. 17-F-0282

-  Delineated Stream Line
-  Delineated Stream
-  Delineated Wetland
-  NYSDEC Adjacent Area
-  WTG
-  Collection Line
-  Access Road
-  Intersection Improvement
-  Facility Site (See Note 1)

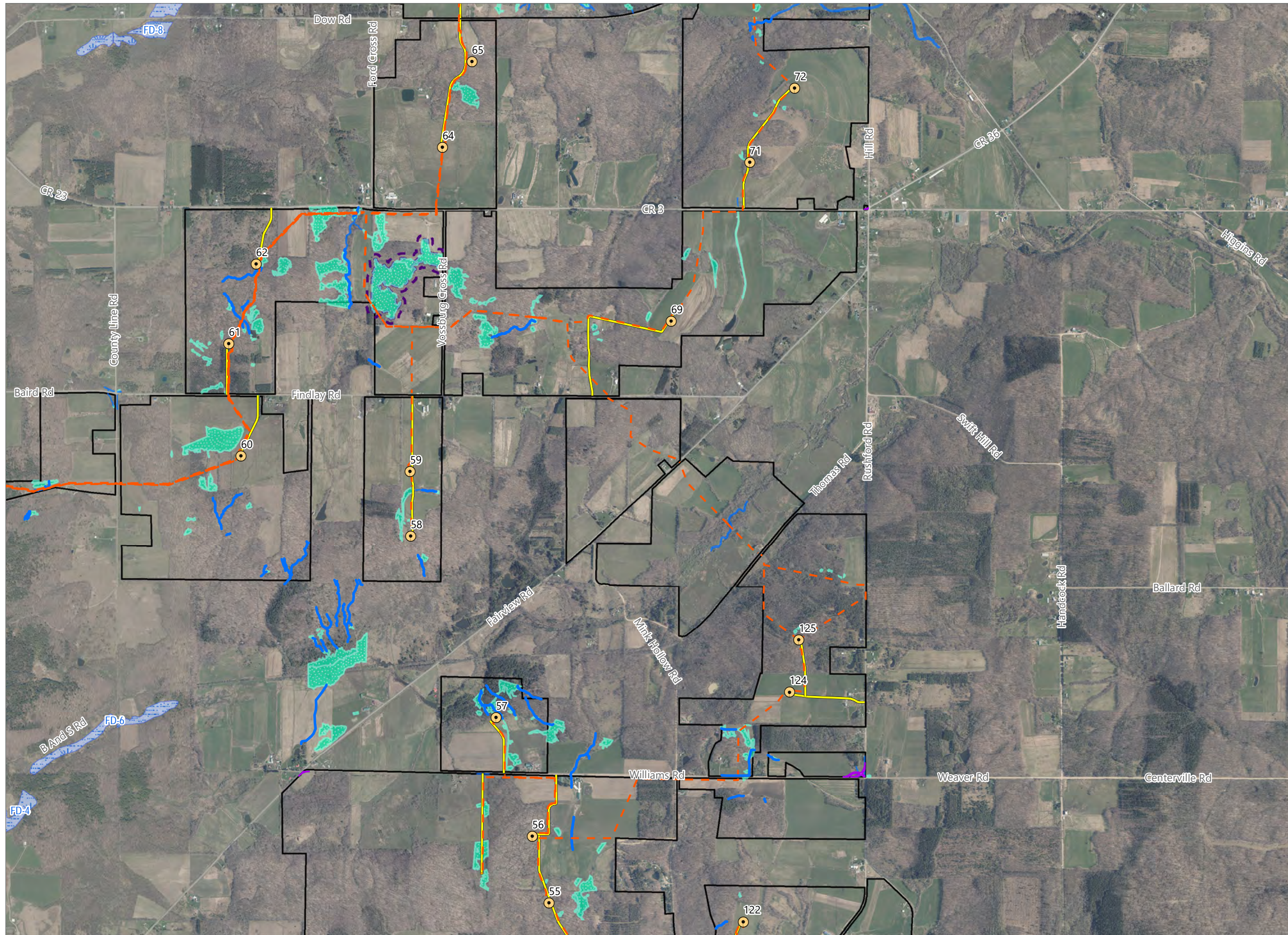


Sheet 4 of 10



Prepared January 23, 2023
(1) Facility Site Boundary based on County GIS dataset.
Basemap: NYS DOP "2020-2021" orthoimagery map service

Figure 8: Updated Figure 22-2. Delineated Wetlands

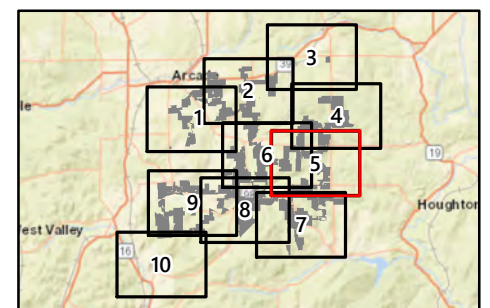


Alle-Catt Wind Farm

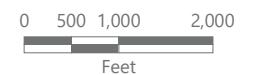
Towns of Arcade, Centerville, Farmersville, Freedom, and Rushford Allegany, Cattaraugus, and Wyoming Counties, New York

Certificate Amendment
Case No. 17-F-0282

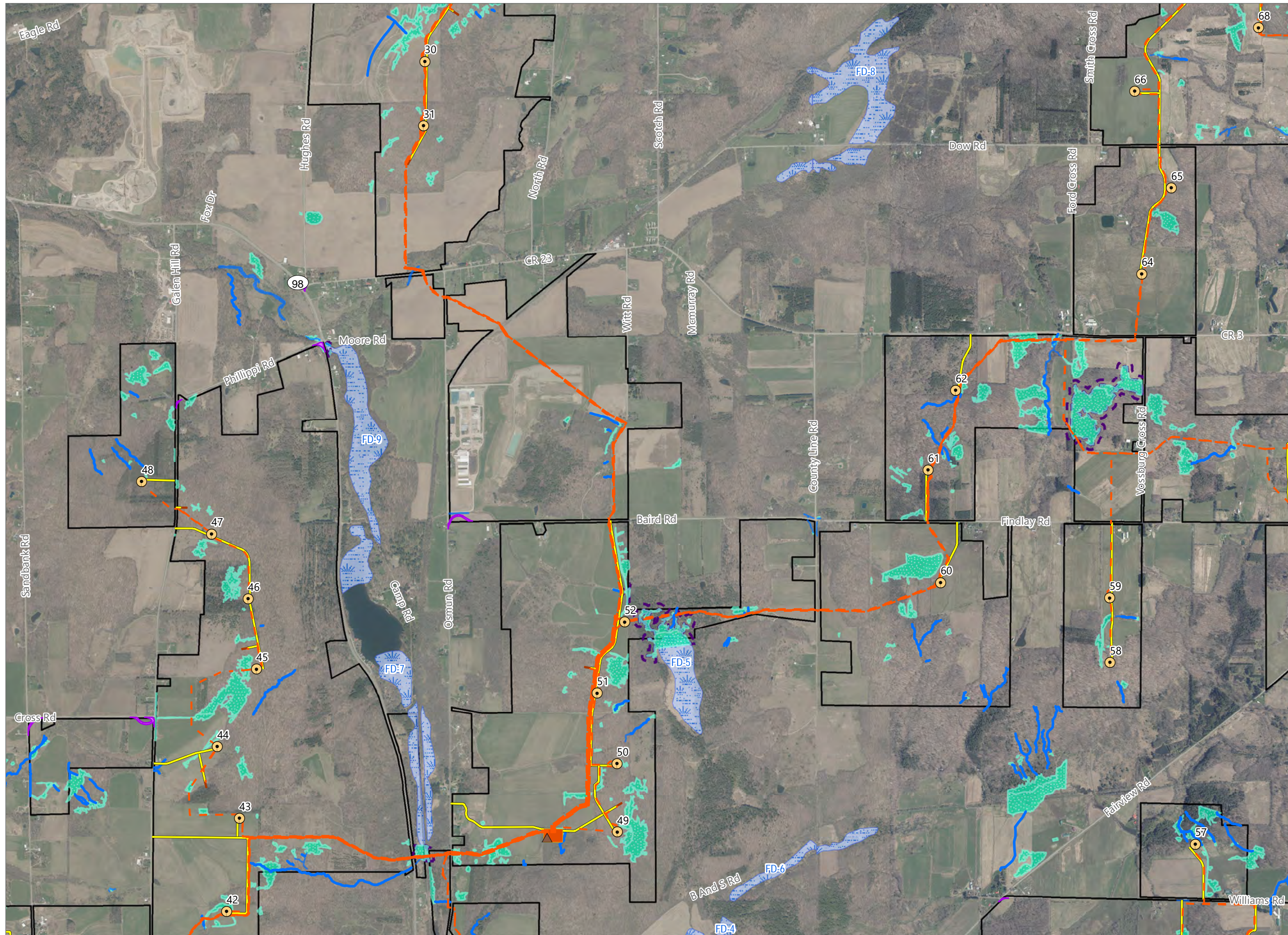
- Delineated Stream Line
- █ Delineated Stream
- █ Delineated Wetland
- █ NYSDEC Adjacent Area
- WTG
- Collection Line
- Access Road
- █ ADLS Pad
- █ Intersection Improvement
- █ Facility Site (See Note 1)



Sheet 5 of 10



Prepared January 23, 2023
(1) Facility Site Boundary based on County GIS dataset.
Basemap: NYS DOP "2020-2021" orthoimagery map service

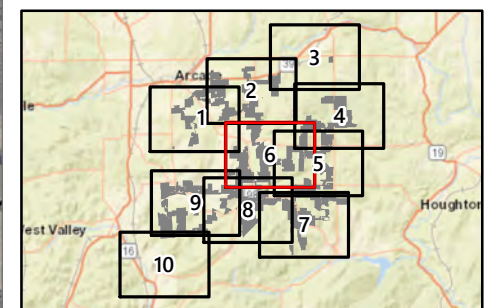


Alle-Catt Wind Farm

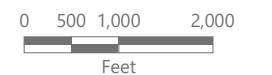
Towns of Arcade, Centerville, Farmersville, Freedom, and Rushford Allegany, Cattaraugus, and Wyoming Counties, New York

Certificate Amendment
Case No. 17-F-0282

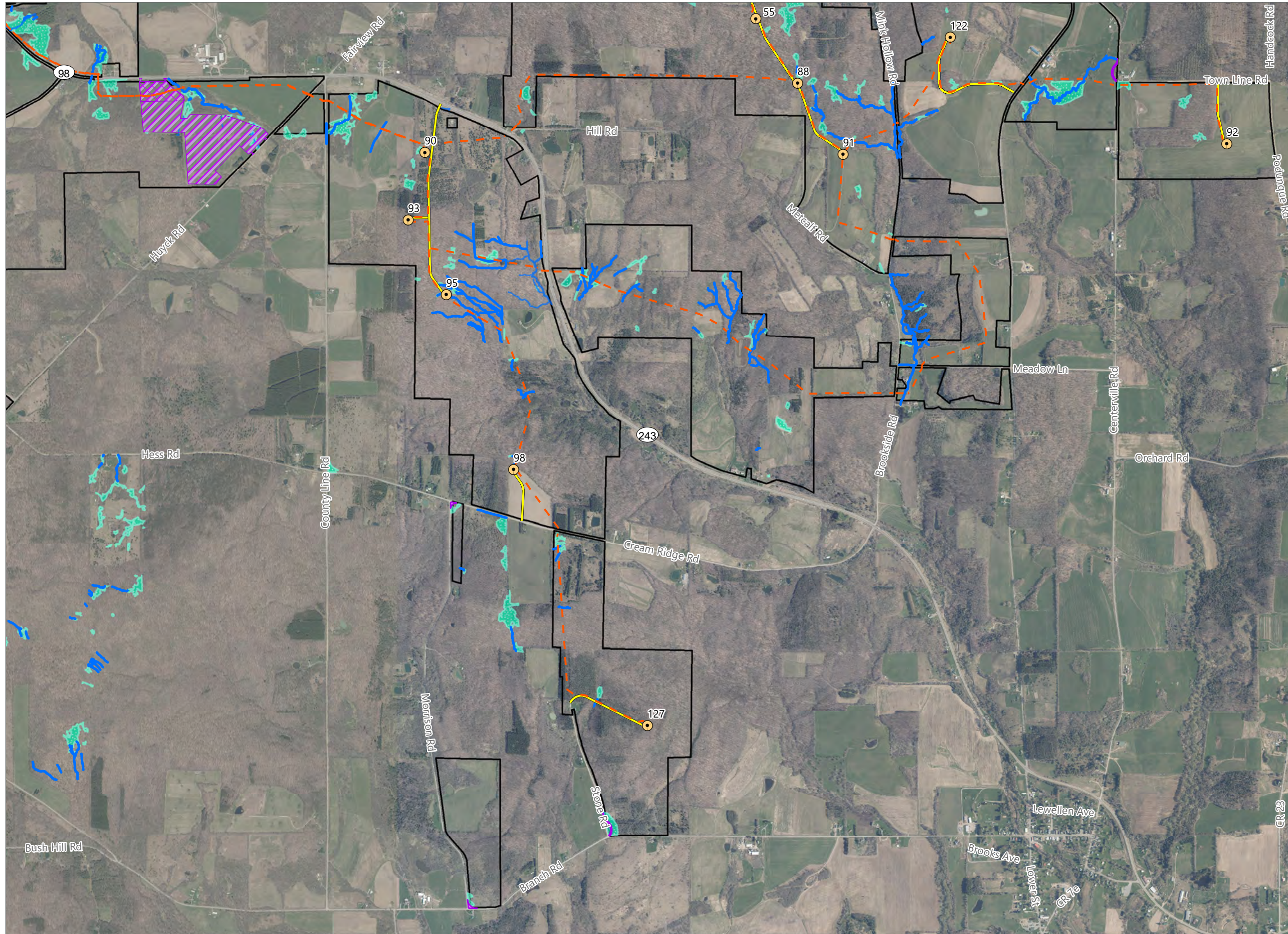
- Delineated Stream Line
- Delineated Stream
- Delineated Wetland
- NYSDEC Adjacent Area
- WTG
- ▲ Microwave Tower
- Collection Line
- Access Road
- Collection Substation
- Identflight Pad
- Intersection Improvement
- Facility Site (See Note 1)



Sheet 6 of 10



Prepared January 23, 2023
(1) Facility Site Boundary based on County GIS dataset.
Basemap: NYS DOP "2020-2021" orthoimagery map service

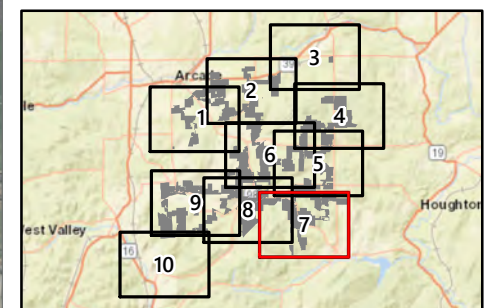


Alle-Catt Wind Farm

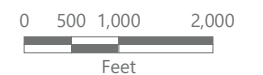
Towns of Arcade, Centerville, Farmersville, Freedom, and Rushford Allegany, Cattaraugus, and Wyoming Counties, New York

Certificate Amendment
Case No. 17-F-0282

- Delineated Stream Line
- Delineated Stream
- Delineated Wetland
- WTG
- Collection Line
- Access Road
- Laydown Area
- Batch Plant
- Intersection Improvement
- Facility Site (See Note 1)

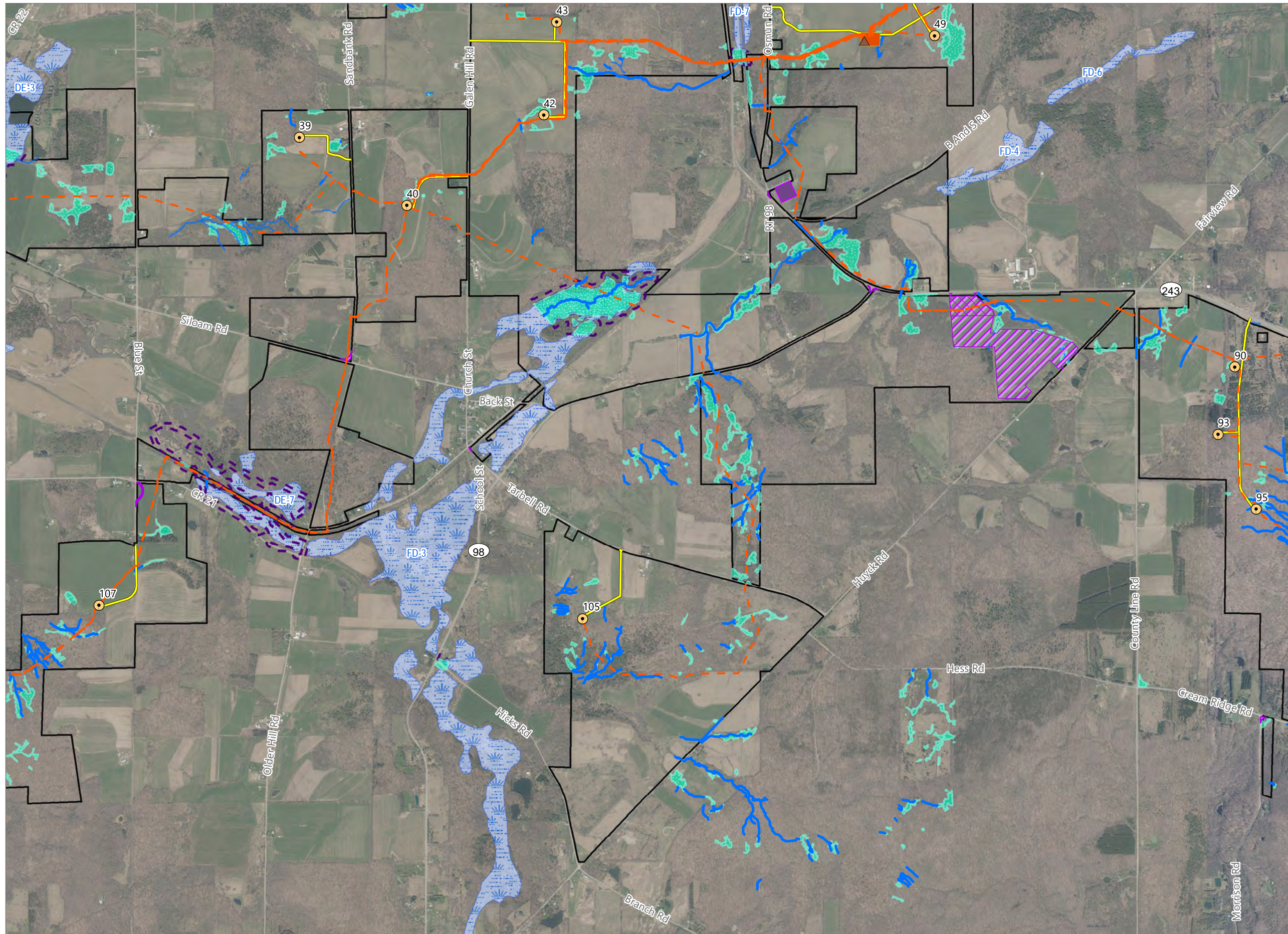


Sheet 7 of 10



Prepared January 23, 2023
(1) Facility Site Boundary based on County GIS dataset.
Basemap: NYS DOP "2020-2021" orthoimagery map service

Figure 8: Updated Figure 22-2. Delineated Wetlands

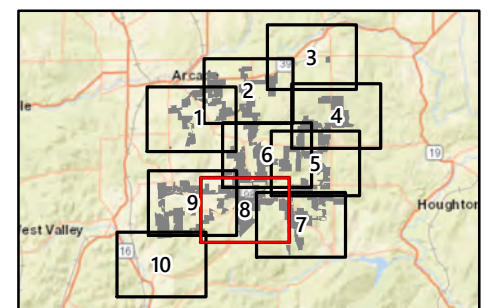


Alle-Catt Wind Farm

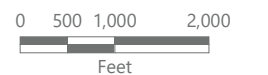
Towns of Arcade, Centerville, Farmersville, Freedom, and Rushford Allegany, Cattaraugus, and Wyoming Counties, New York

Certificate Amendment
Case No. 17-F-0282

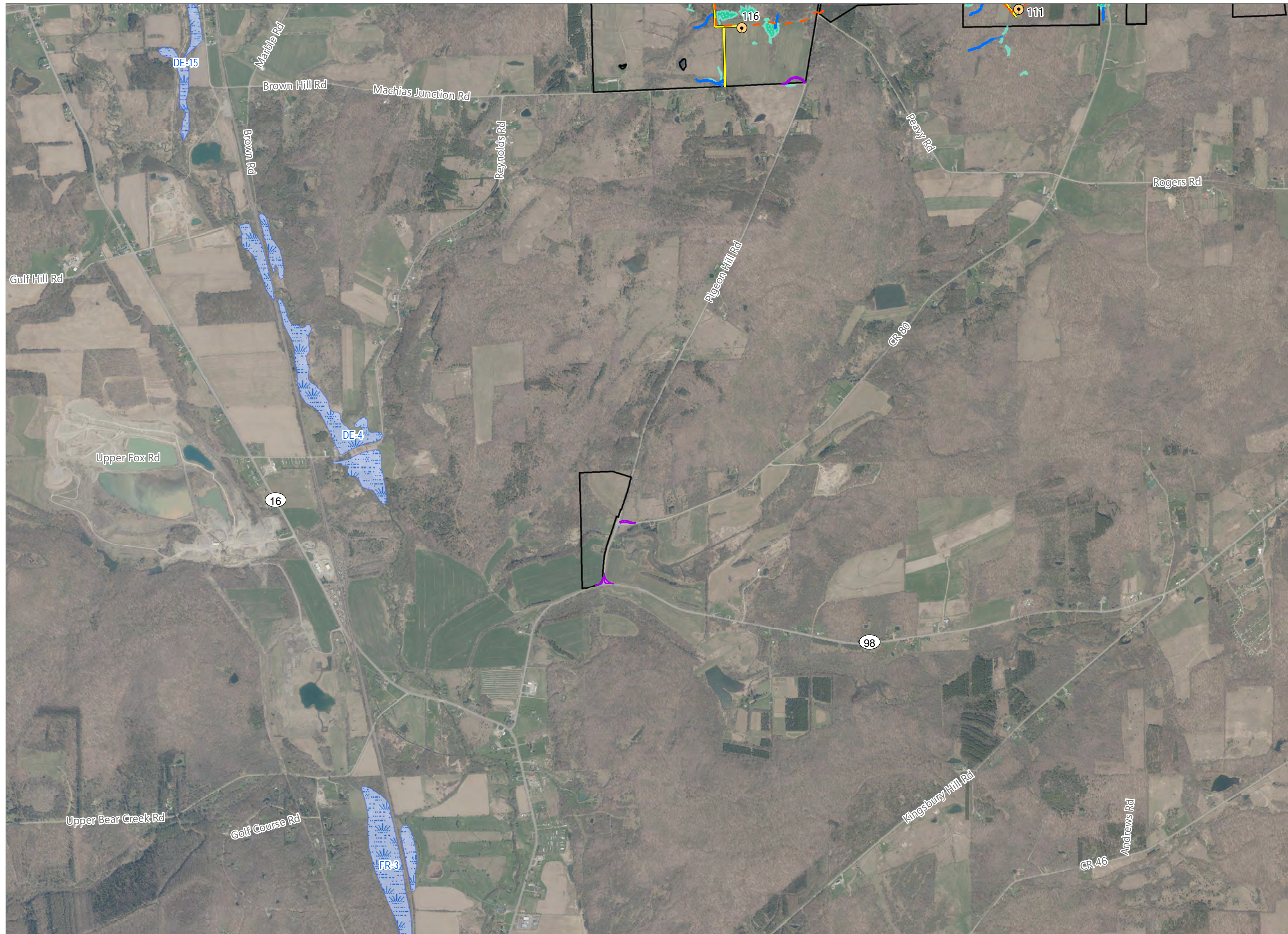
- Delineated Stream Line
- Delineated Stream
- Delineated Wetland
- NYSDEC Adjacent Area
- WTG
- Microwave Tower
- Collection Line
- Access Road
- Collection Substation
- O&M Building
- Laydown Area
- Batch Plant
- Intersection Improvement
- Facility Site (See Note 1)



Sheet 8 of 10




Prepared January 23, 2023
(1) Facility Site Boundary based on County GIS dataset.
Basemap: NYS DOP "2020-2021" orthoimagery map service

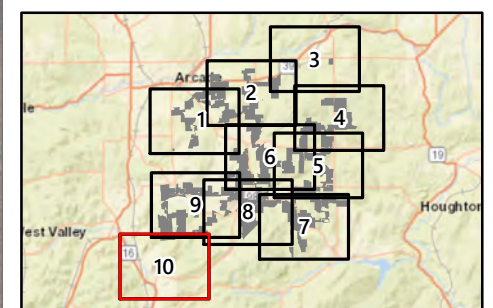


Alle-Catt Wind Farm

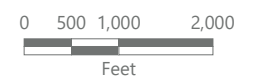
Towns of Arcade, Centerville, Farmersville, Freedom, and Rushford Allegany, Cattaraugus, and Wyoming Counties, New York

Certificate Amendment
Case No. 17-F-0282

-  Delineated Stream Line
-  Delineated Stream
-  Delineated Wetland
-  WTG
-  Collection Line
-  Access Road
-  Intersection Improvement
-  Facility Site (See Note 1)



Sheet 10 of 10



Prepared January 23, 2023
(1) Facility Site Boundary based on County GIS dataset.
Basemap: NYS DOP "2020-2021" orthoimagery map service