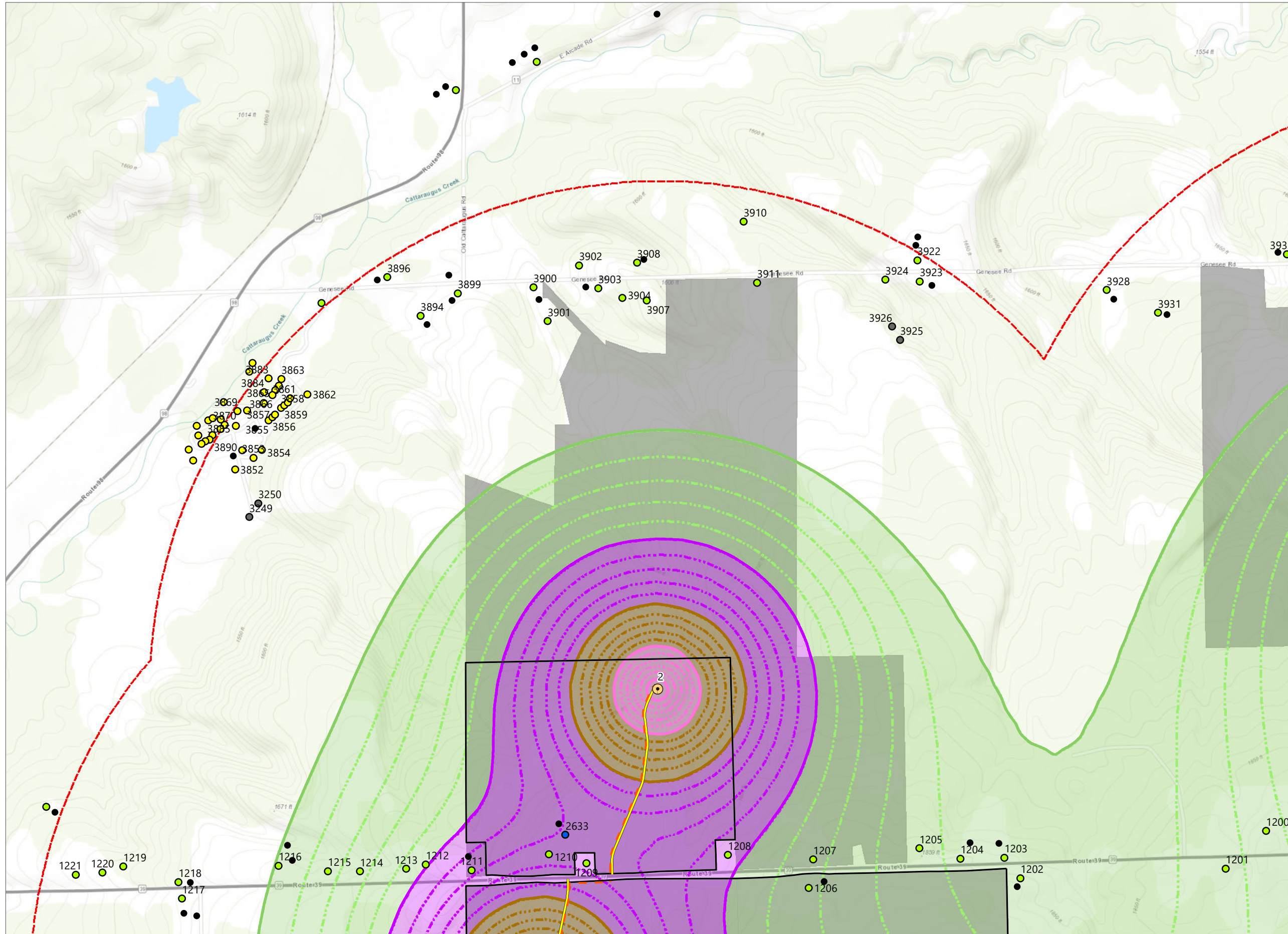


Figure 6: Updated Figure 19-1. Noise Contours



### Alle-Catt Wind Farm

Towns of Arcade, Centerville, Farmersville, Freedom, and Rushford Allegany, Cattaraugus, and Wyoming Counties, New York

**Article 10 Amendment**  
**Case No. 17-F-0282**

- Category 1 Receptor
- Category 2 Receptor
- Unknown Structure
- Commercial, Institution, School or Public Structure
- Other Structure
- ESL Noise Contours (dBA)
  - 35-40 dBA
  - 40-45 dBA
  - 45-50 dBA
  - 50 dBA or Higher
- WTG
- Collection Line
- Access Road
- Participating Parcel
- Facility Site (See Note 1)
- 1-mile Study Area

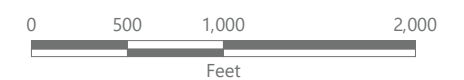
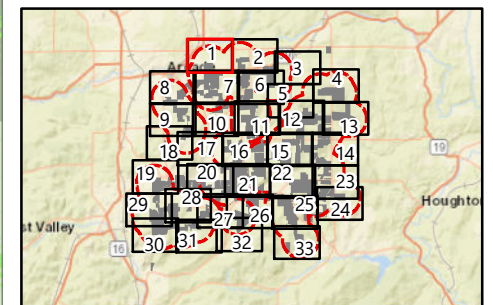
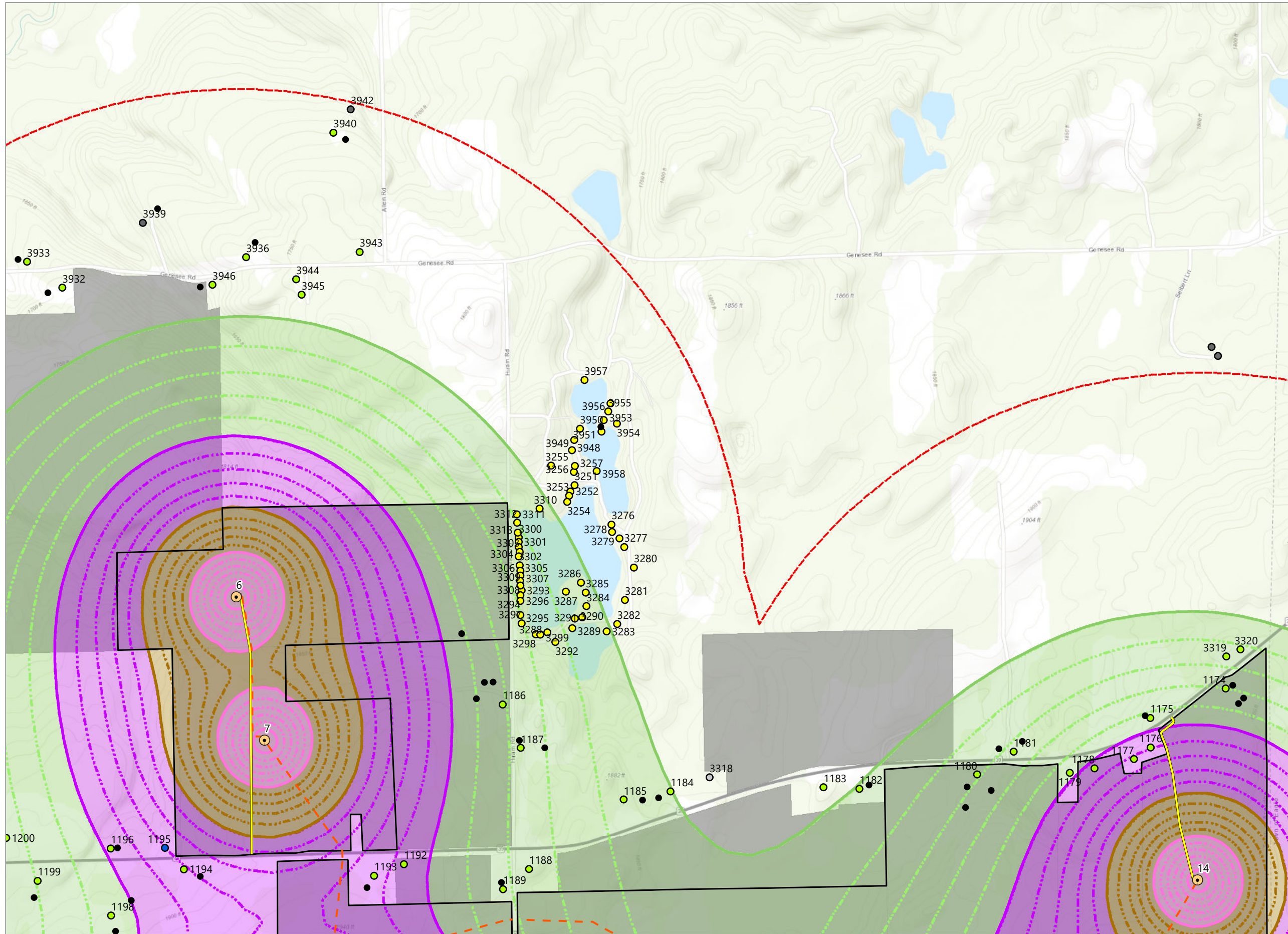


Figure 6: Updated Figure 19-1. Noise Contours

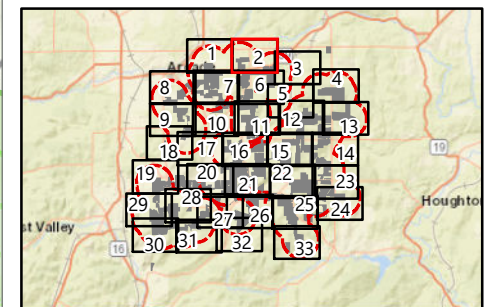


### Alle-Catt Wind Farm

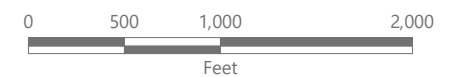
Towns of Arcade, Centerville, Farmersville, Freedom, and Rushford Allegany, Cattaraugus, and Wyoming Counties, New York

**Article 10 Amendment**  
**Case No. 17-F-0282**

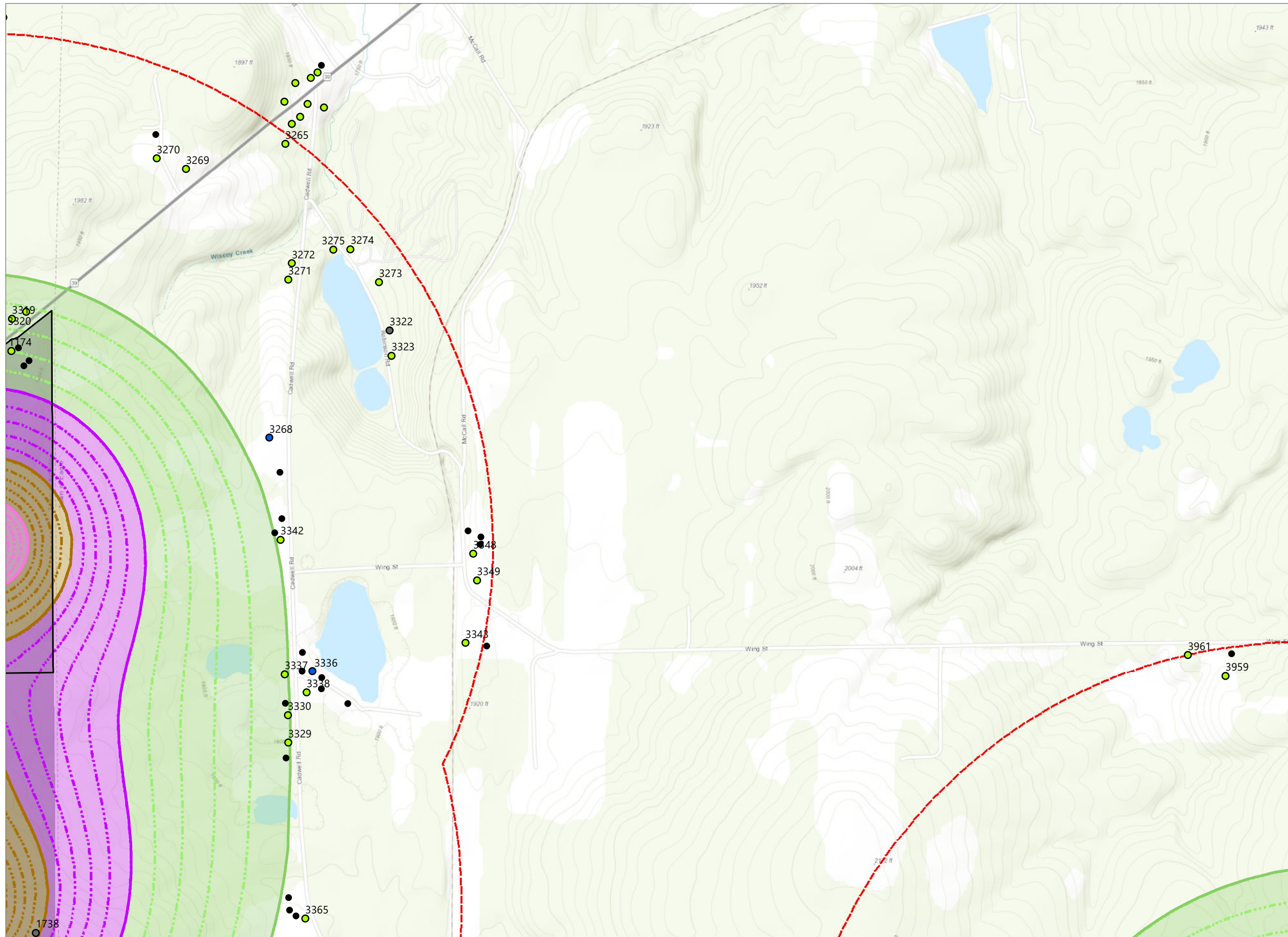
- Category 1 Receptor
  - Category 2 Receptor
  - Category 4 Receptor
  - Unknown Structure
  - Commercial, Institution, School or Public Structure
  - Other Structure
- ESL Noise Contours (dBA)
- 35-40 dBA
  - 40-45 dBA
  - 45-50 dBA
  - 50 dBA or Higher
- WTG
  - Collection Line
  - Access Road
  - Participating Parcel
  - Facility Site (See Note 1)
  - 1-mile Study Area



Sheet 2 of 33



Prepared January 24, 2023  
(1) Facility Site Boundary based on County GIS dataset.  
Basemap: Esri "World Topographic Map" map service

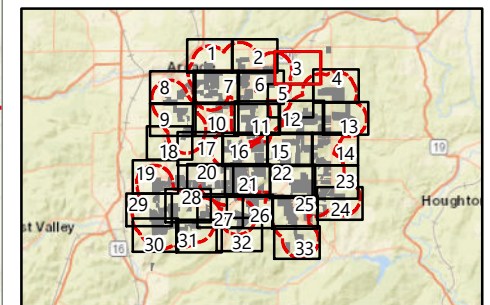


### Alle-Catt Wind Farm

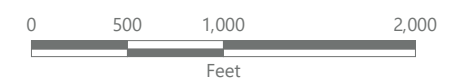
Towns of Arcade, Centerville, Farmersville, Freedom, and Rushford  
Allegany, Cattaraugus, and Wyoming  
Counties, New York

**Article 10 Amendment**  
**Case No. 17-F-0282**

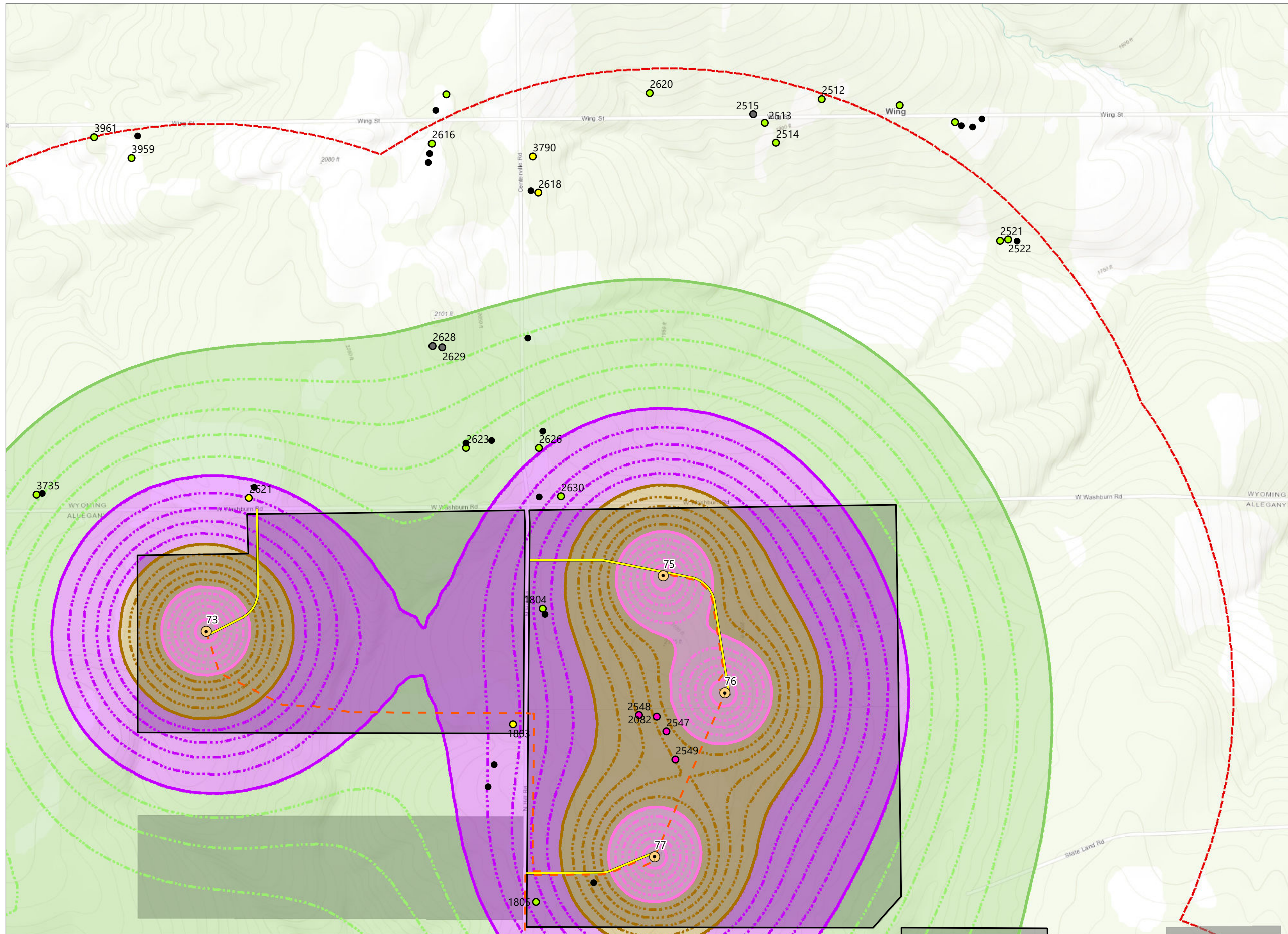
- Category 1 Receptor
  - Unknown Structure
  - Commercial, Institution, School or Public Structure
  - Other Structure
- ESL Noise Contours (dBA)
- 35-40 dBA
  - 40-45 dBA
  - 45-50 dBA
  - 50 dBA or Higher
- Participating Parcel
  - Facility Site (See Note 1)
  - 1-mile Study Area



Sheet 3 of 33



Prepared January 24, 2023  
(1) Facility Site Boundary based on County GIS dataset.  
Basemap: Esri "World Topographic Map" map service



### Alle-Catt Wind Farm

Towns of Arcade, Centerville, Farmersville, Freedom, and Rushford Allegany, Cattaraugus, and Wyoming Counties, New York

**Article 10 Amendment**  
**Case No. 17-F-0282**

- Category 1 Receptor
  - Category 2 Receptor
  - Category 3 Receptor
  - Unknown Structure
  - Other Structure
- ESL Noise Contours (dBA)
- 35-40 dBA
  - 40-45 dBA
  - 45-50 dBA
  - 50 dBA or Higher
- WTG
  - Collection Line
  - Access Road
  - Participating Parcel
  - Facility Site (See Note 1)
  - 1-mile Study Area

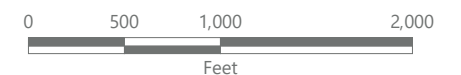
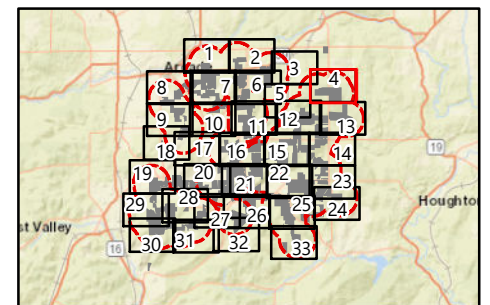
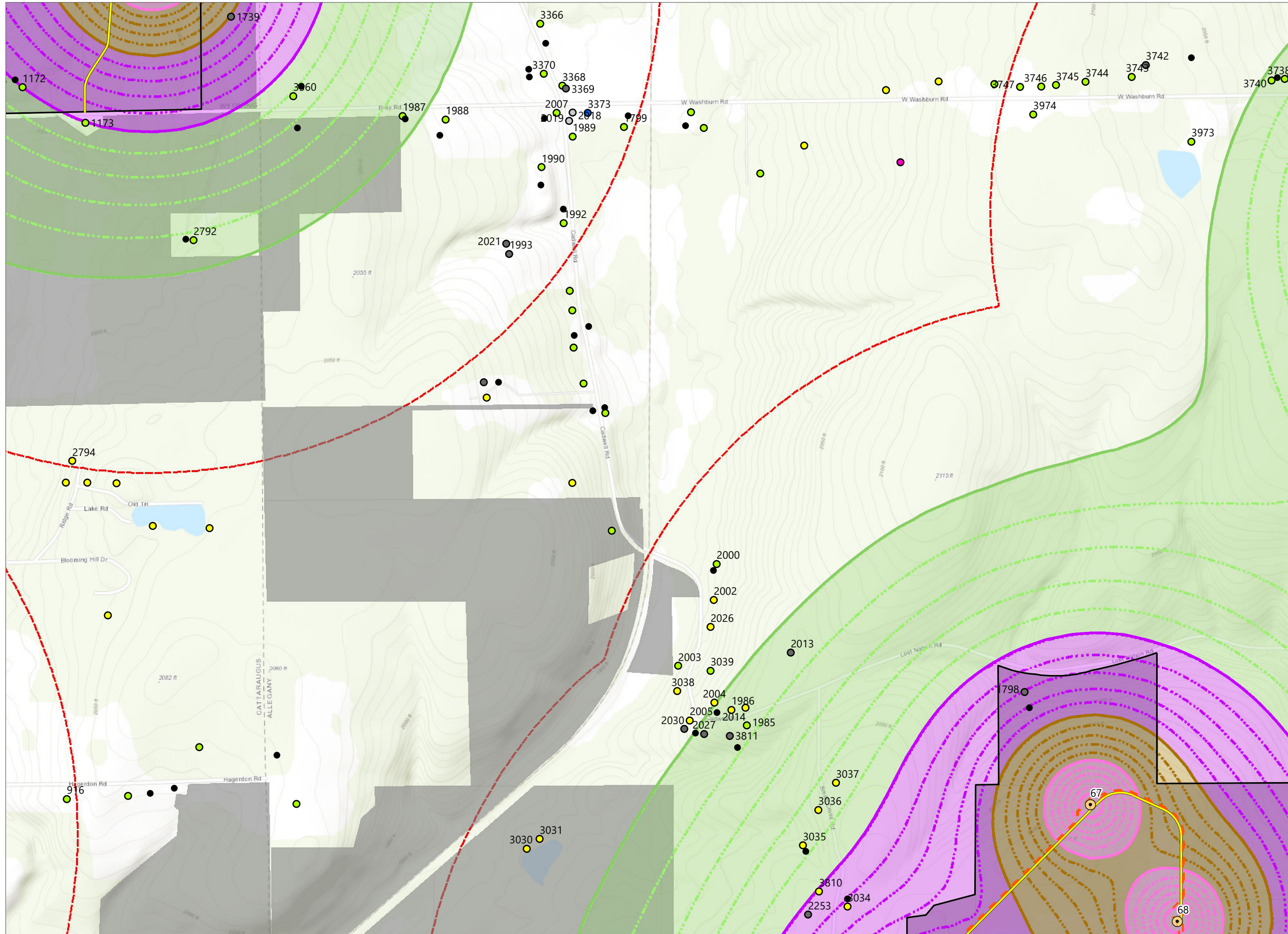


Figure 6: Updated Figure 19-1. Noise Contours

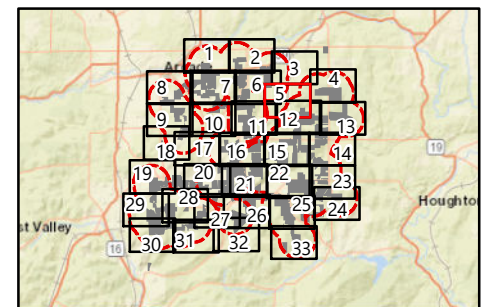


### Alle-Catt Wind Farm

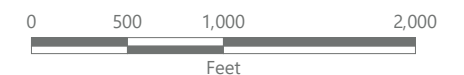
Towns of Arcade, Centerville, Farmersville, Freedom, and Rushford  
 Allegany, Cattaraugus, and Wyoming  
 Counties, New York

**Article 10 Amendment**  
**Case No. 17-F-0282**

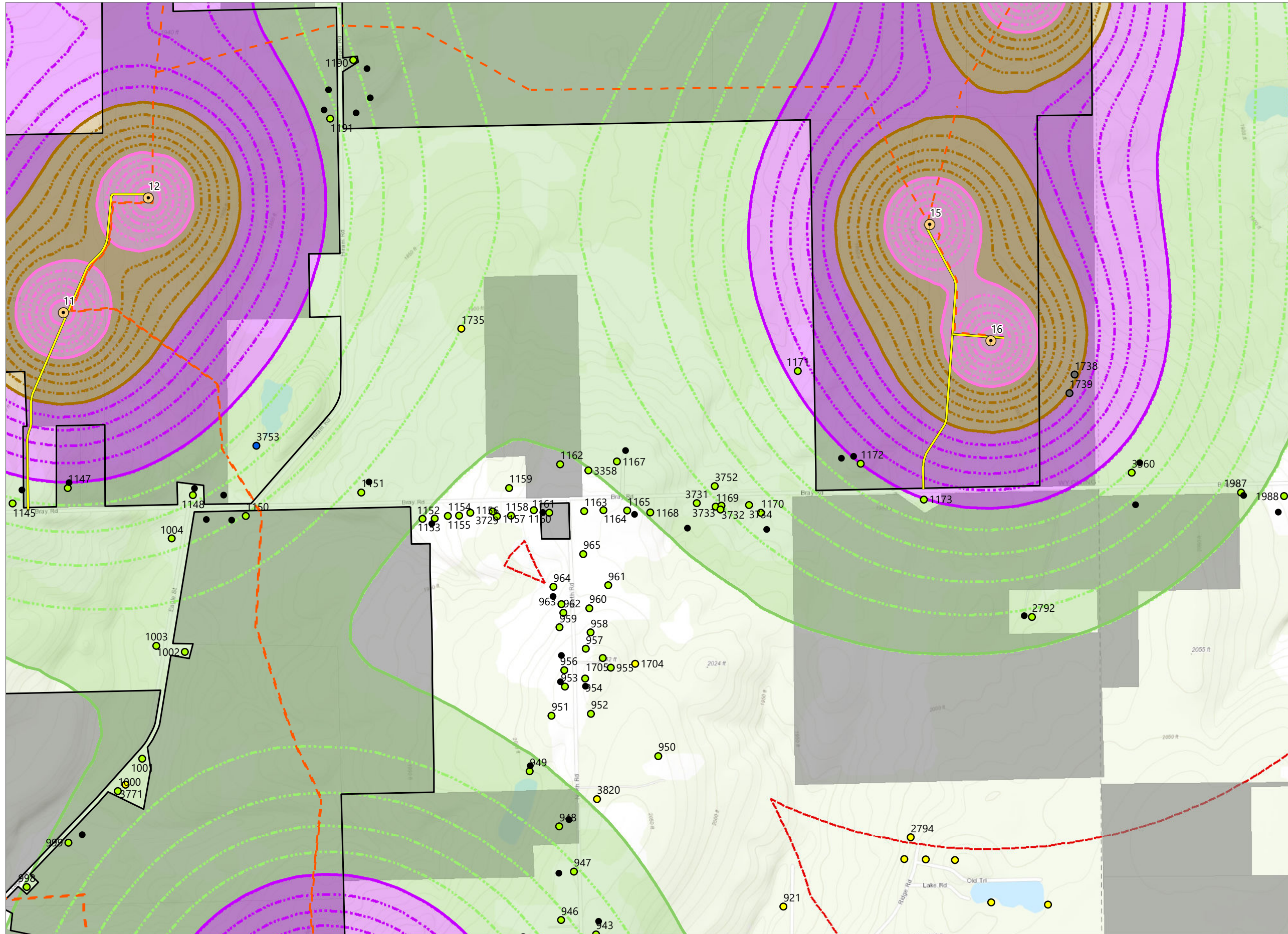
- Category 1 Receptor
  - Category 2 Receptor
  - Category 3 Receptor
  - Category 4 Receptor
  - Unknown Structure
  - Commercial, Institution, School or Public Structure
  - Other Structure
- ESL Noise Contours (dBA)
- 35-40 dBA
  - 40-45 dBA
  - 45-50 dBA
  - 50 dBA or Higher
- WTG
  - Collection Line
  - Access Road
  - Participating Parcel
  - Facility Site (See Note 1)
  - 1-mile Study Area



Sheet 5 of 33



Prepared January 24, 2023  
 (1) Facility Site Boundary based on County GIS dataset.  
 Basemap: Esri "World Topographic Map" map service

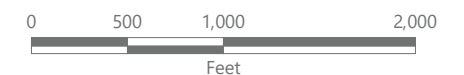
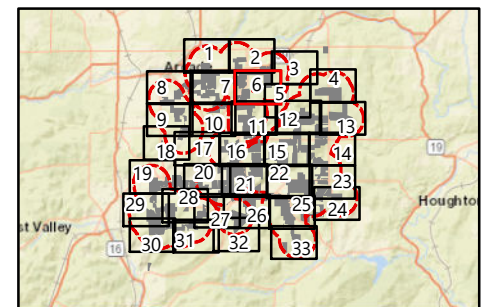


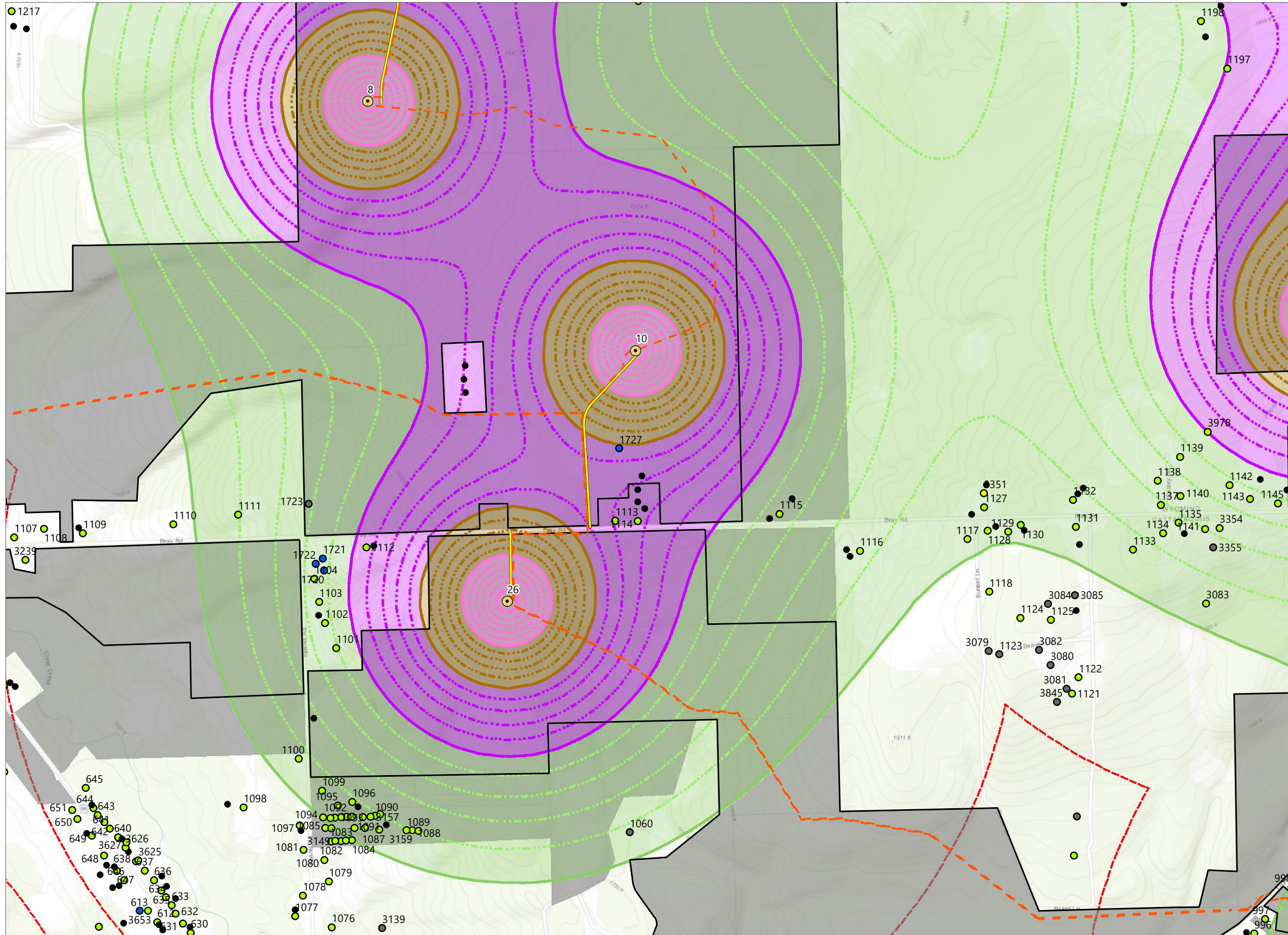
### Alle-Catt Wind Farm

Towns of Arcade, Centerville, Farmersville, Freedom, and Rushford Allegany, Cattaraugus, and Wyoming Counties, New York

**Article 10 Amendment**  
**Case No. 17-F-0282**

- Category 1 Receptor
  - Category 2 Receptor
  - Unknown Structure
  - Commercial, Institution, School or Public Structure
  - Other Structure
- ESL Noise Contours (dBA)
- 35-40 dBA
  - 40-45 dBA
  - 45-50 dBA
  - 50 dBA or Higher
- WTG
  - Collection Line
  - Access Road
  - Participating Parcel
  - Facility Site (See Note 1)
  - 1-mile Study Area



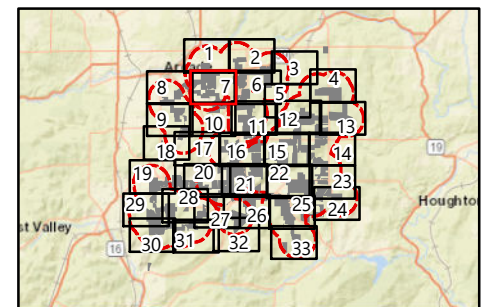


### Alle-Catt Wind Farm

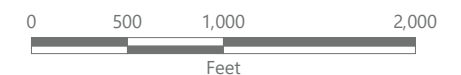
Towns of Arcade, Centerville, Farmersville, Freedom, and Rushford Allegany, Cattaraugus, and Wyoming Counties, New York

**Article 10 Amendment**  
**Case No. 17-F-0282**

- Category 1 Receptor
  - Category 2 Receptor
  - Unknown Structure
  - Commercial, Institution, School or Public Structure
  - Other Structure
- ESL Noise Contours (dBA)
- 35-40 dBA
  - 40-45 dBA
  - 45-50 dBA
  - 50 dBA or Higher
- WTG
  - Collection Line
  - Access Road
  - Participating Parcel
  - Facility Site (See Note 1)
  - 1-mile Study Area



Sheet 7 of 33



Prepared January 24, 2023  
(1) Facility Site Boundary based on County GIS dataset.  
Basemap: Esri "World Topographic Map" map service

Figure 6: Updated Figure 19-1. Noise Contours



### Alle-Catt Wind Farm

Towns of Arcade, Centerville, Farmersville, Freedom, and Rushford Allegany, Cattaraugus, and Wyoming Counties, New York

**Article 10 Amendment**  
**Case No. 17-F-0282**

- Category 1 Receptor
  - Category 2 Receptor
  - Unknown Structure
  - Commercial, Institution, School or Public Structure
  - Other Structure
- ESL Noise Contours (dBA)
- 35-40 dBA
  - 40-45 dBA
  - 45-50 dBA
  - 50 dBA or Higher
- WTG
  - Collection Line
  - Access Road
  - Participating Parcel
  - Facility Site (See Note 1)
  - 1-mile Study Area

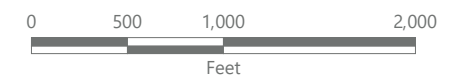
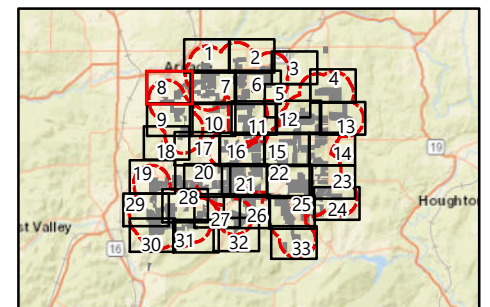
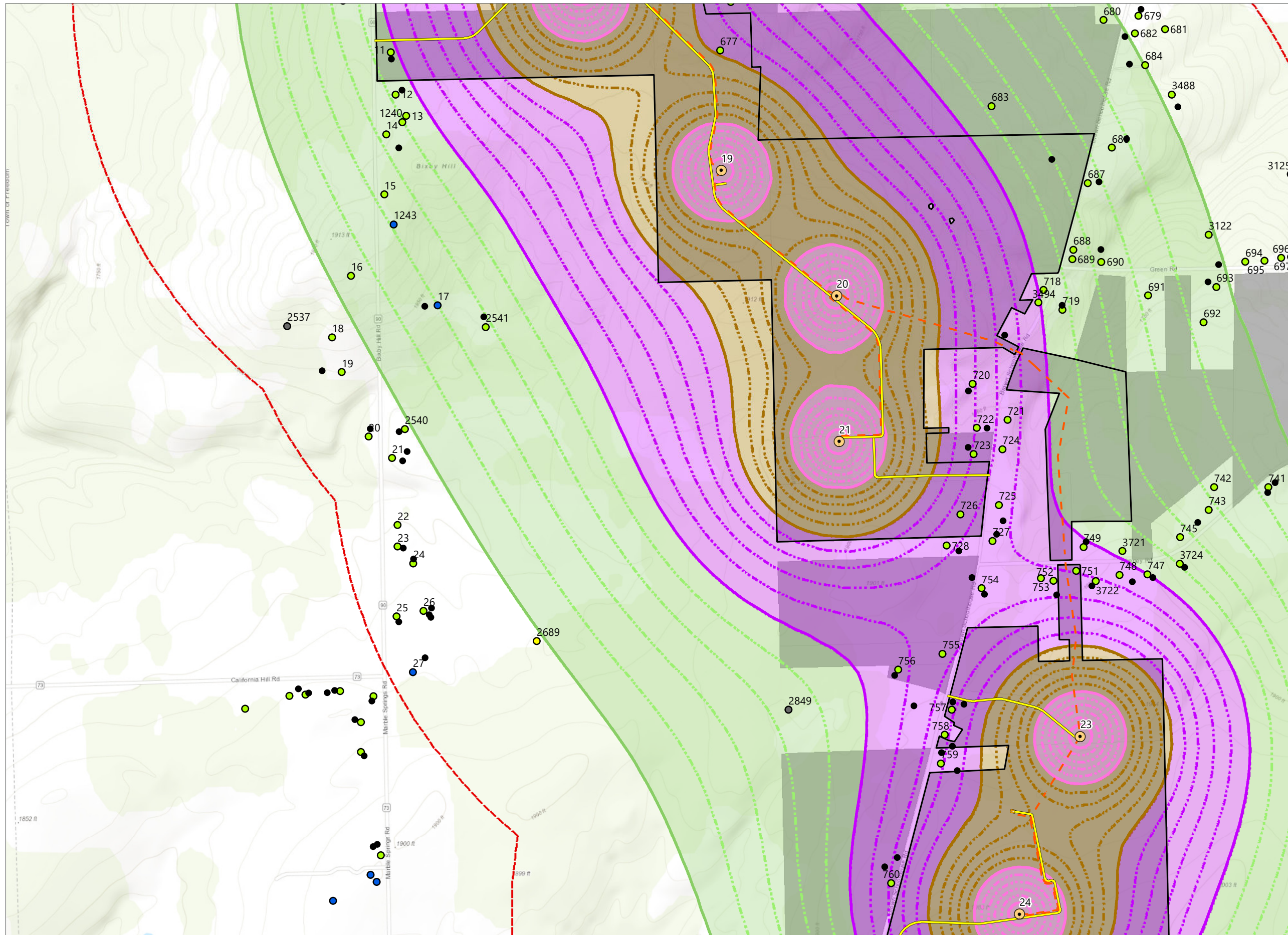




Figure 6: Updated Figure 19-1. Noise Contours

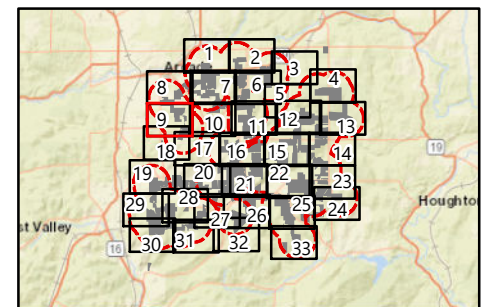


### Alle-Catt Wind Farm

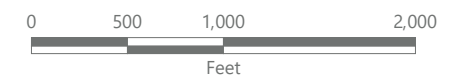
Towns of Arcade, Centerville, Farmersville, Freedom, and Rushford Allegany, Cattaraugus, and Wyoming Counties, New York

**Article 10 Amendment  
Case No. 17-F-0282**

- Category 1 Receptor
  - Category 2 Receptor
  - Unknown Structure
  - Commercial, Institution, School or Public Structure
  - Other Structure
  - WTG
  - - - Collection Line
  - Access Road
  - ADLS Pad
  - Participating Parcel
  - Facility Site (See Note 1)
  - 1-mile Study Area
- ESL Noise Contours (dBA)
- 35-40 dBA
  - 40-45 dBA
  - 45-50 dBA
  - 50 dBA or Higher

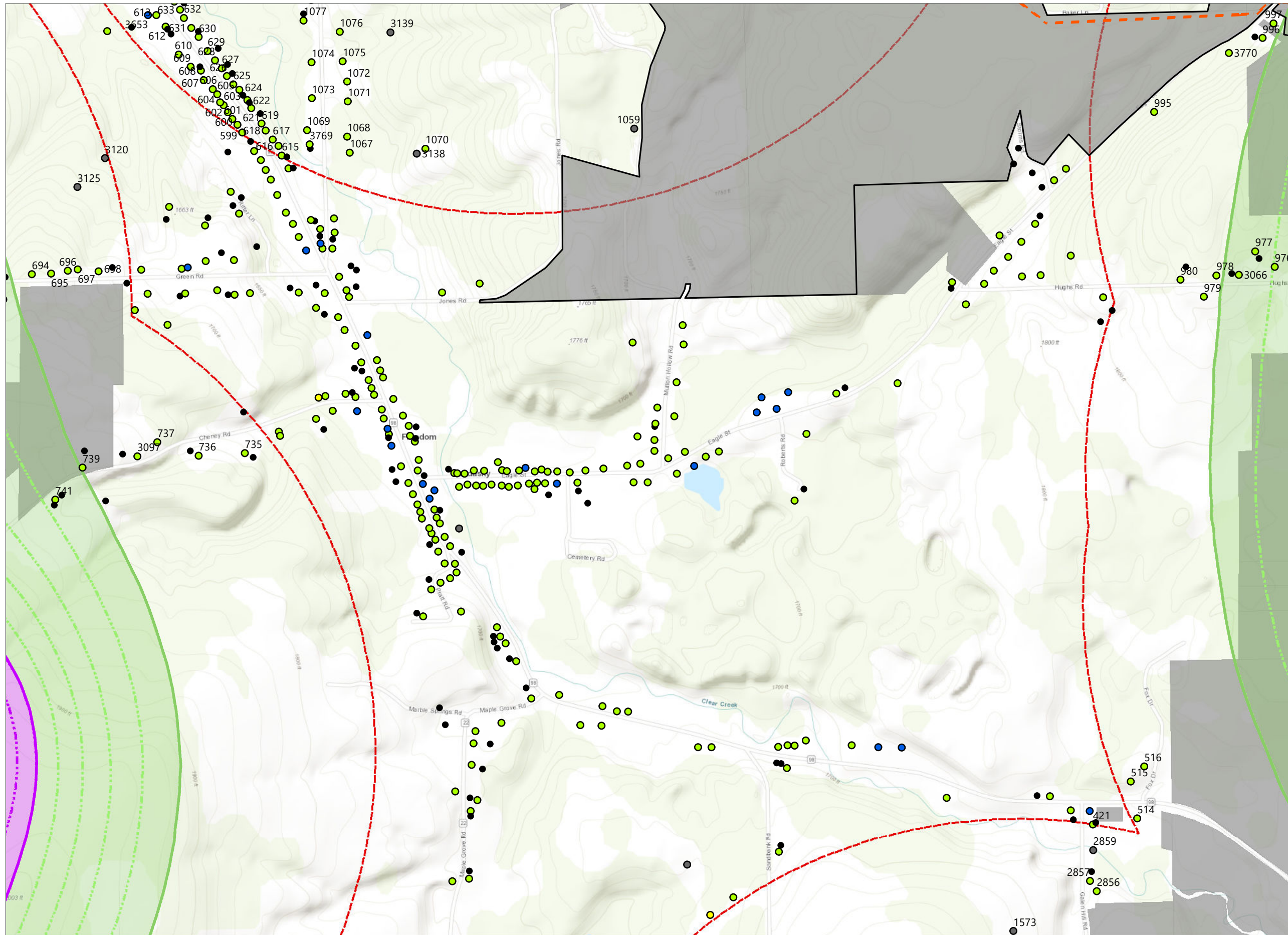


Sheet 9 of 33



Prepared January 24, 2023  
(1) Facility Site Boundary based on County GIS dataset.  
Basemap: Esri "World Topographic Map" map service

Figure 6: Updated Figure 19-1. Noise Contours

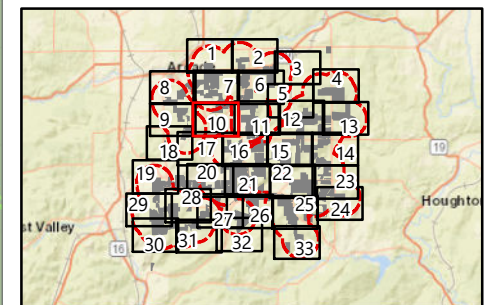


### Alle-Catt Wind Farm

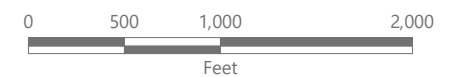
Towns of Arcade, Centerville, Farmersville, Freedom, and Rushford Allegany, Cattaraugus, and Wyoming Counties, New York

**Article 10 Amendment**  
**Case No. 17-F-0282**

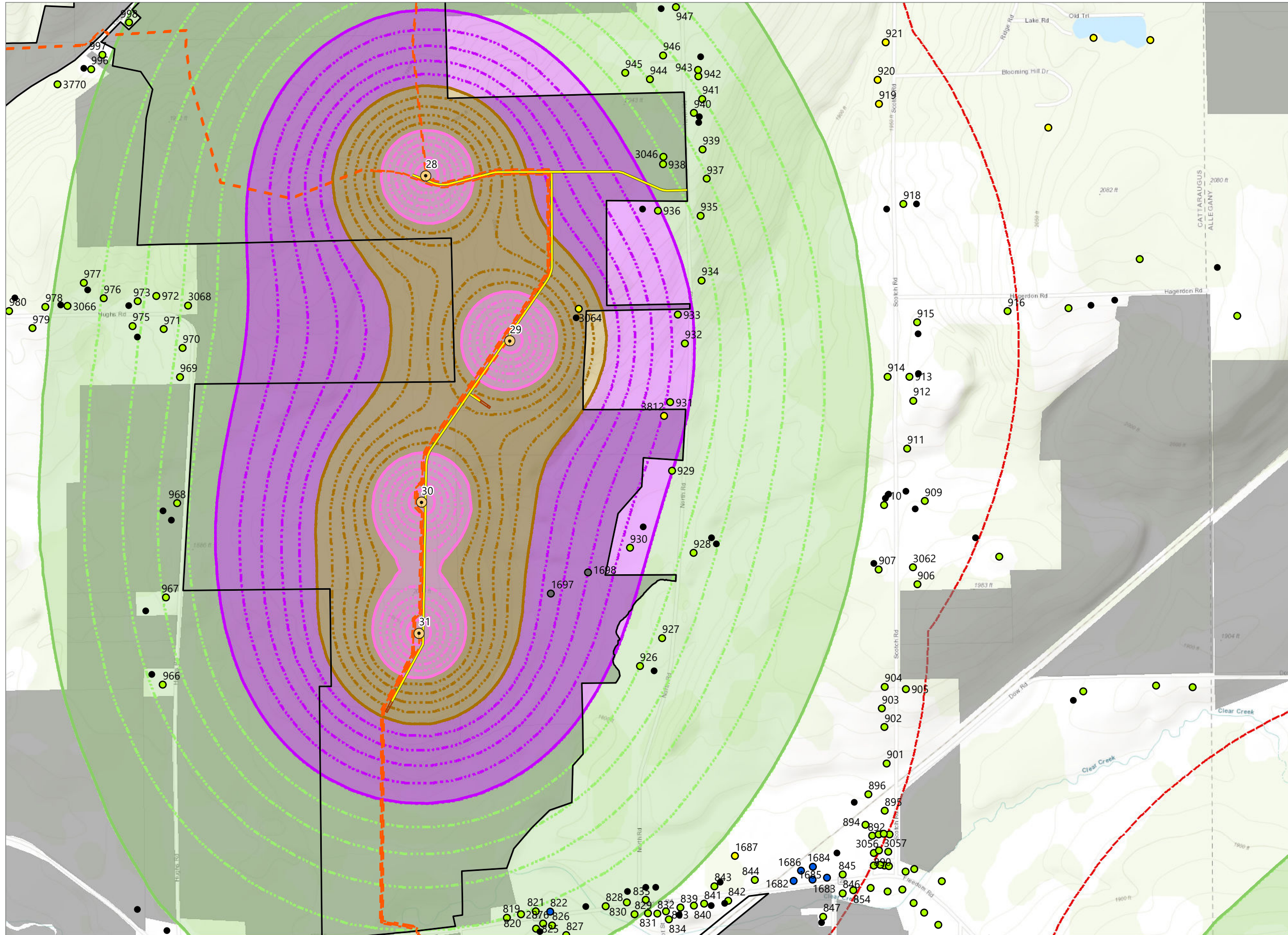
- Category 1 Receptor
- Category 2 Receptor
- Unknown Structure
- Commercial, Institution, School or Public Structure
- Other Structure
- ESL Noise Contours (dBA)
  - 35-40 dBA
  - 40-45 dBA
- Collection Line
- Participating Parcel
- Facility Site (See Note 1)
- 1-mile Study Area



Sheet 10 of 33



Prepared January 24, 2023  
(1) Facility Site Boundary based on County GIS dataset.  
Basemap: Esri "World Topographic Map" map service

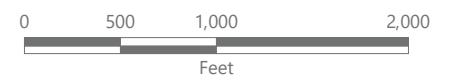
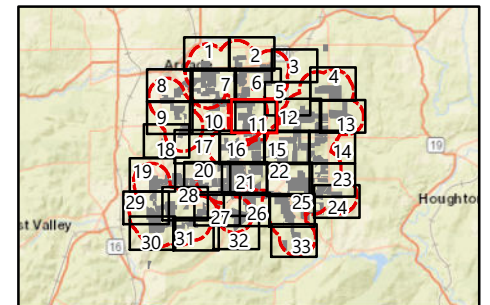


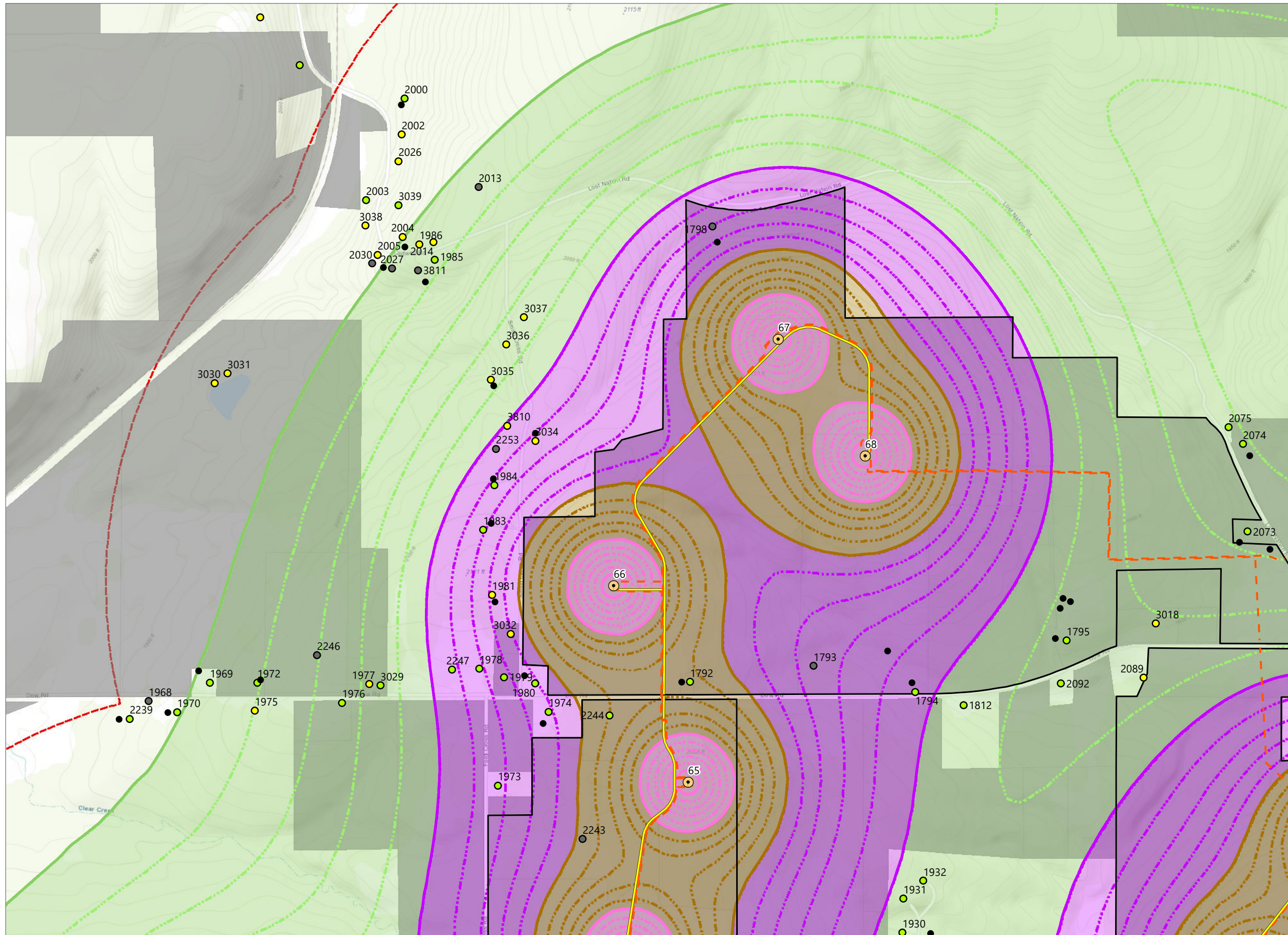
### Alle-Catt Wind Farm

Towns of Arcade, Centerville, Farmersville, Freedom, and Rushford  
 Allegany, Cattaraugus, and Wyoming  
 Counties, New York

**Article 10 Amendment**  
**Case No. 17-F-0282**

- Category 1 Receptor
- Category 2 Receptor
- Unknown Structure
- Commercial, Institution, School or Public Structure
- Other Structure
- ESL Noise Contours (dBA)
  - 35-40 dBA
  - 40-45 dBA
  - 45-50 dBA
  - 50 dBA or Higher
- WTG
- Collection Line
- Access Road
- Identiflight Pad
- Participating Parcel
- Facility Site (See Note 1)
- 1-mile Study Area



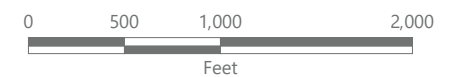
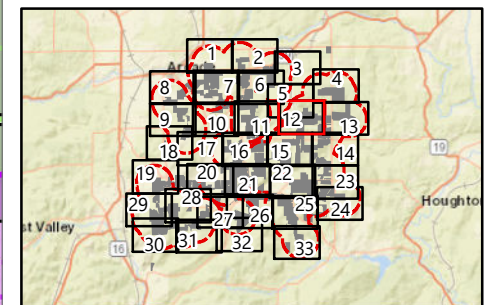


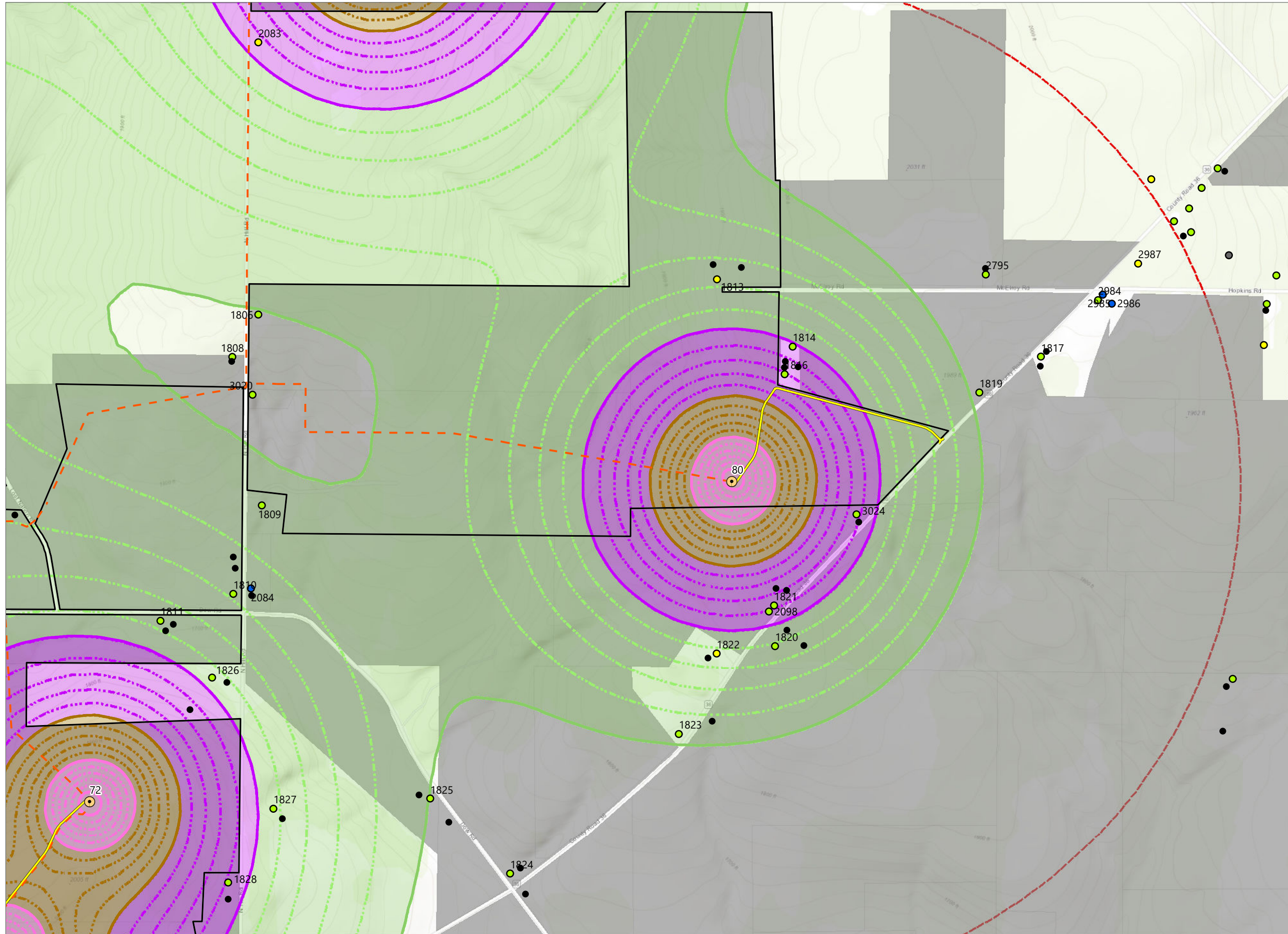
### Alle-Catt Wind Farm

Towns of Arcade, Centerville, Farmersville, Freedom, and Rushford Allegany, Cattaraugus, and Wyoming Counties, New York

**Article 10 Amendment**  
**Case No. 17-F-0282**

- Category 1 Receptor
  - Category 2 Receptor
  - Unknown Structure
  - Other Structure
- ESL Noise Contours (dBA)
- 35-40 dBA
  - 40-45 dBA
  - 45-50 dBA
  - 50 dBA or Higher
- WTG
  - Collection Line
  - Access Road
  - Participating Parcel
  - Facility Site (See Note 1)
  - 1-mile Study Area



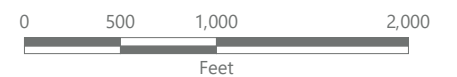
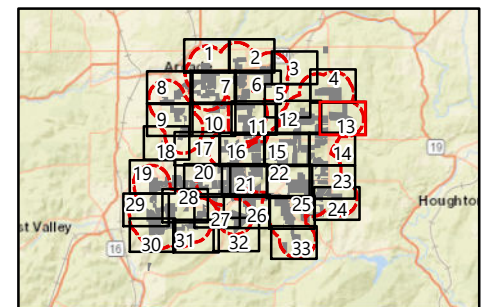


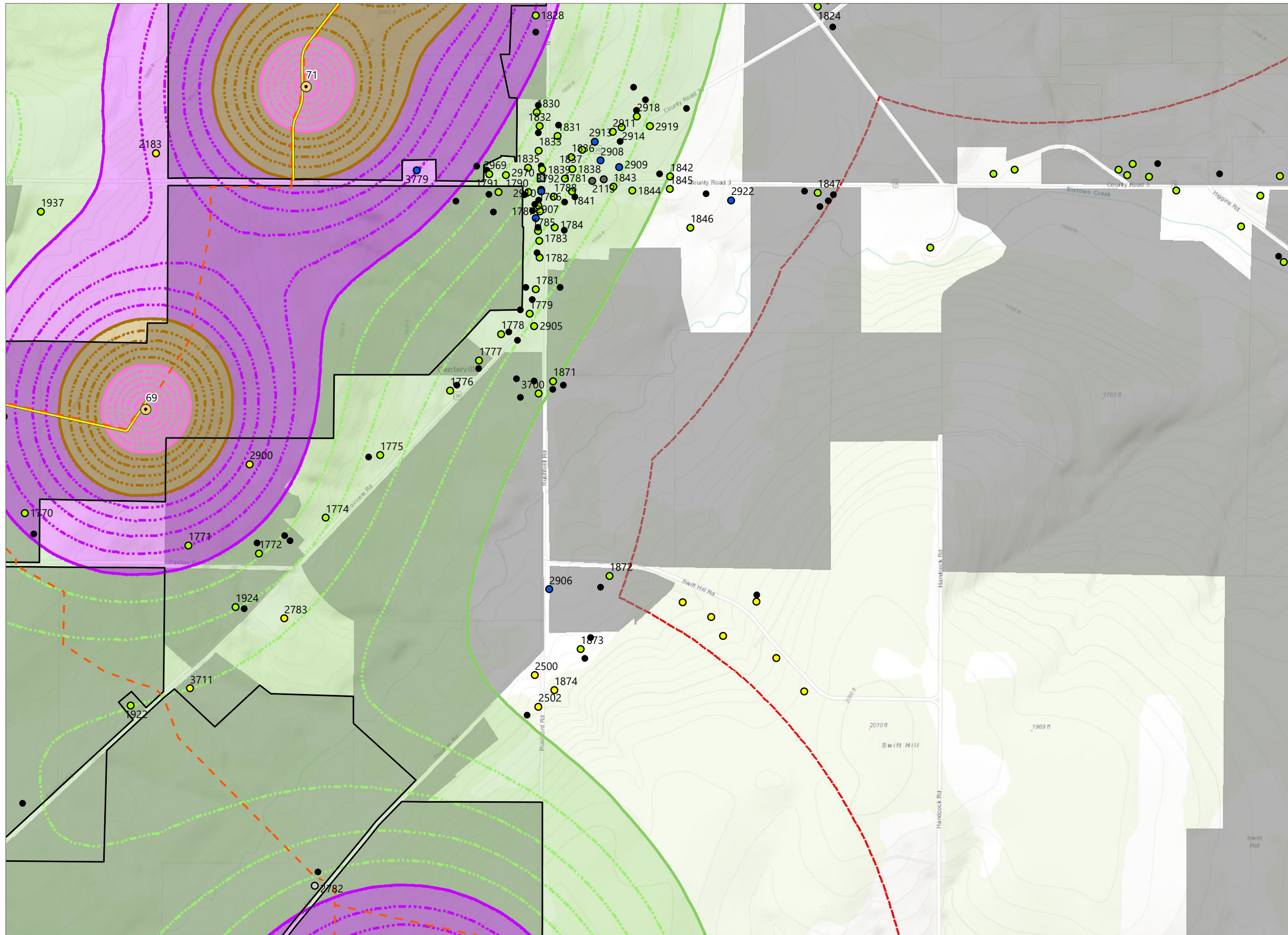
### Alle-Catt Wind Farm

Towns of Arcade, Centerville, Farmersville, Freedom, and Rushford Allegany, Cattaraugus, and Wyoming Counties, New York

**Article 10 Amendment**  
**Case No. 17-F-0282**

- Category 1 Receptor
  - Category 2 Receptor
  - Unknown Structure
  - Commercial, Institution, School or Public Structure
  - Other Structure
  - WTG
  - Collection Line
  - Access Road
  - Participating Parcel
  - Facility Site (See Note 1)
  - 1-mile Study Area
- ESL Noise Contours (dBA)
- 35-40 dBA
  - 40-45 dBA
  - 45-50 dBA
  - 50 dBA or Higher



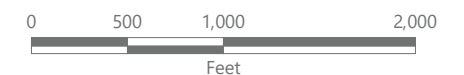
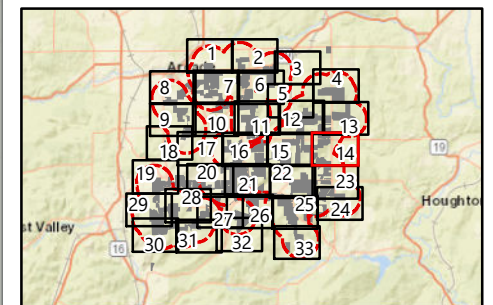


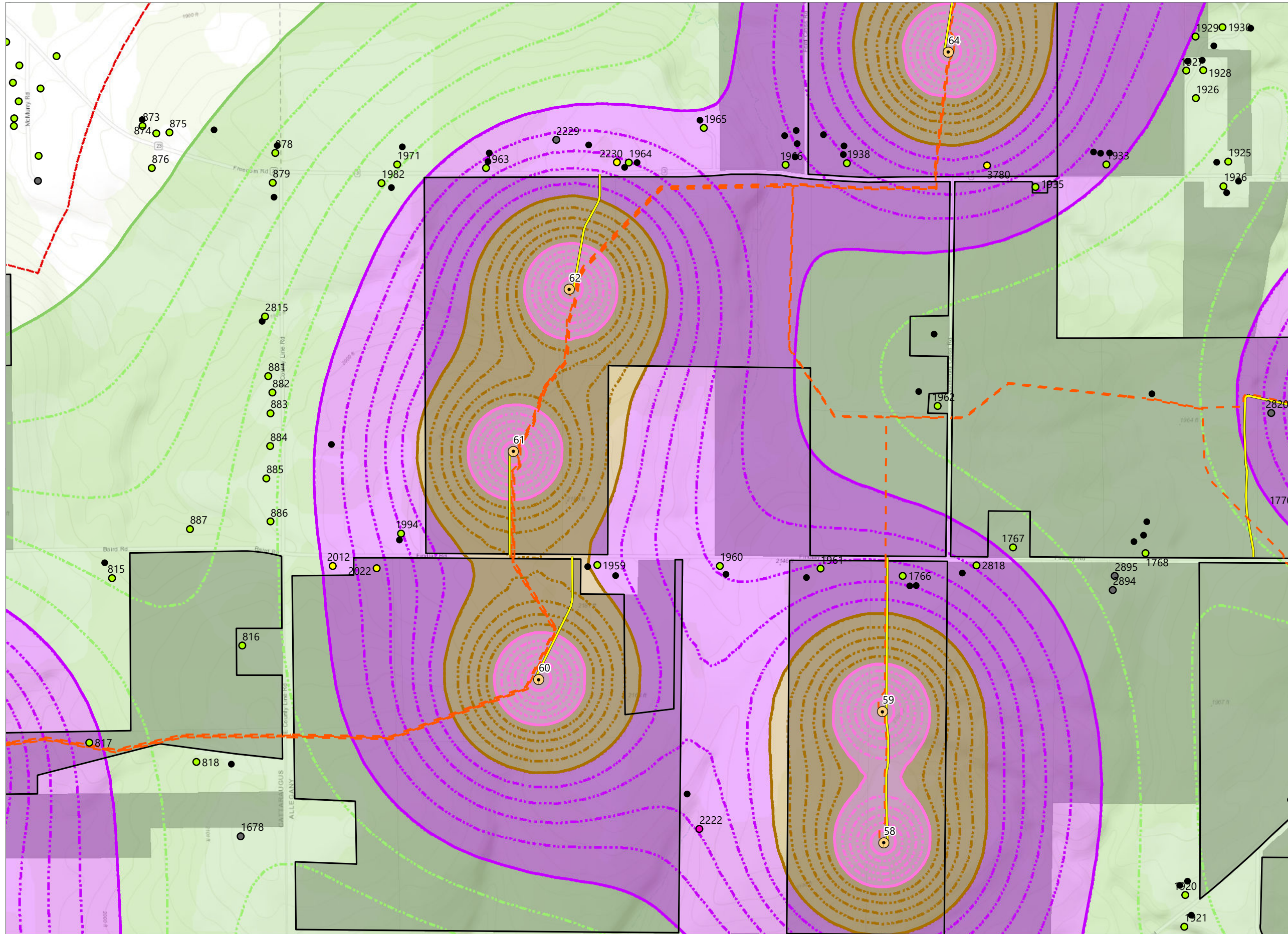
### Alle-Catt Wind Farm

Towns of Arcade, Centerville, Farmersville, Freedom, and Rushford Allegany, Cattaraugus, and Wyoming Counties, New York

**Article 10 Amendment**  
**Case No. 17-F-0282**

- Category 1 Receptor
- Category 2 Receptor
- Category 4 Receptor
- Unknown Structure
- Commercial, Institution, School or Public Structure
- Other Structure
- ESL Noise Contours (dBA)
  - 35-40 dBA
  - 40-45 dBA
  - 45-50 dBA
  - 50 dBA or Higher
- WTG
- - - Collection Line
- Access Road
- Participating Parcel
- Facility Site (See Note 1)
- 1-mile Study Area



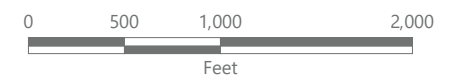
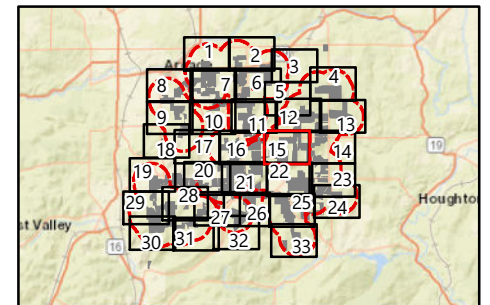


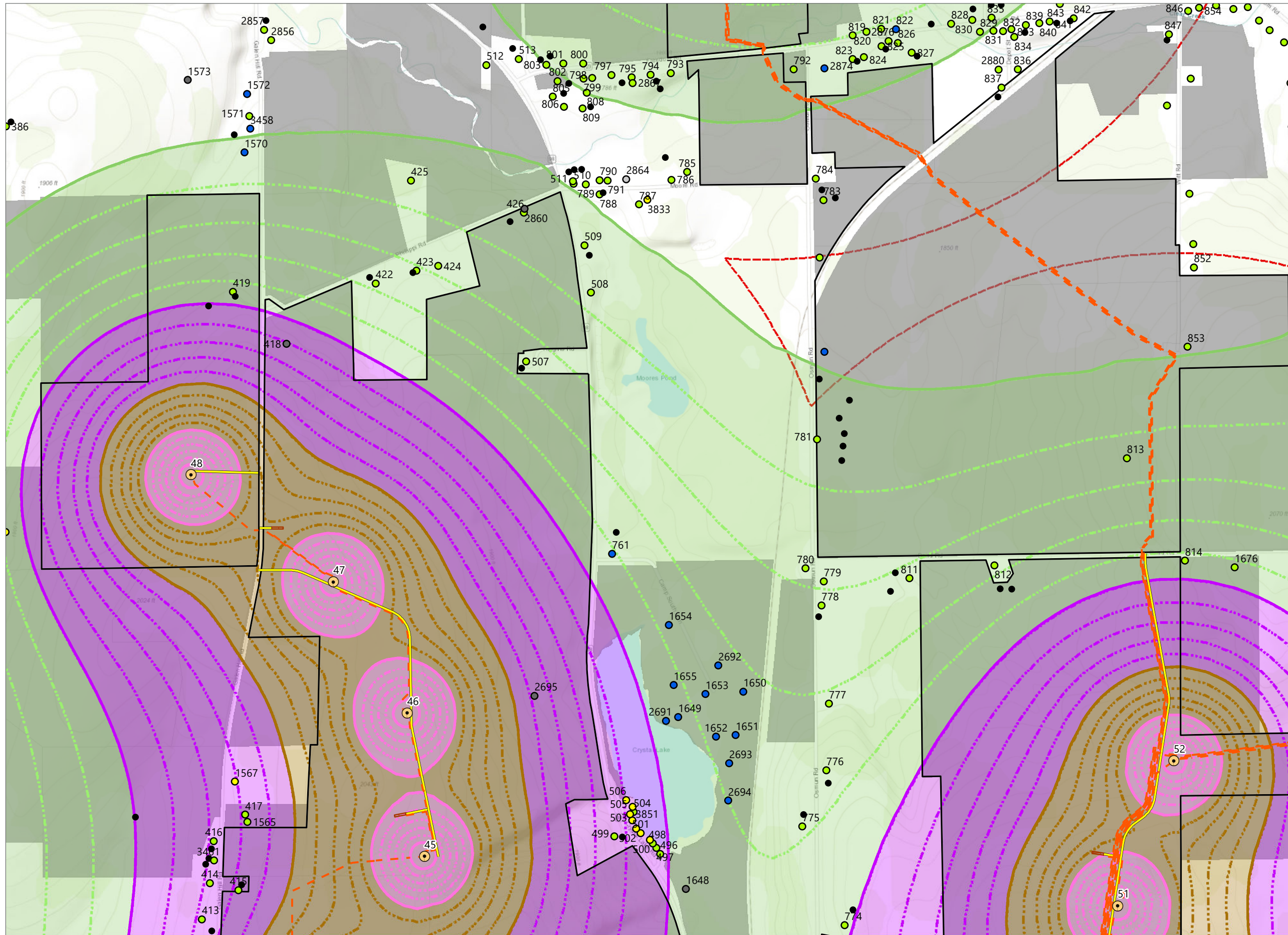
### Alle-Catt Wind Farm

Towns of Arcade, Centerville, Farmersville, Freedom, and Rushford Allegany, Cattaraugus, and Wyoming Counties, New York

**Article 10 Amendment**  
**Case No. 17-F-0282**

- Category 1 Receptor
  - Category 2 Receptor
  - Category 3 Receptor
  - Unknown Structure
  - Other Structure
- ESL Noise Contours (dBA)
- 35-40 dBA
  - 40-45 dBA
  - 45-50 dBA
  - 50 dBA or Higher
- WTG
  - - - Collection Line
  - Access Road
  - Participating Parcel
  - Facility Site (See Note 1)
  - 1-mile Study Area





### Alle-Catt Wind Farm

Towns of Arcade, Centerville, Farmersville, Freedom, and Rushford  
Allegany, Cattaraugus, and Wyoming  
Counties, New York

**Article 10 Amendment**  
**Case No. 17-F-0282**

- Category 1 Receptor
- Category 2 Receptor
- Category 4 Receptor
- Unknown Structure
- Commercial, Institution, School or Public Structure
- Other Structure
- ESL Noise Contours (dBA)
  - 35-40 dBA
  - 40-45 dBA
  - 45-50 dBA
  - 50 dBA or Higher
- WTG
- Collection Line
- Access Road
- Identiflight Pad
- Participating Parcel
- Facility Site (See Note 1)
- 1-mile Study Area

