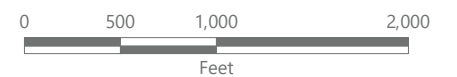
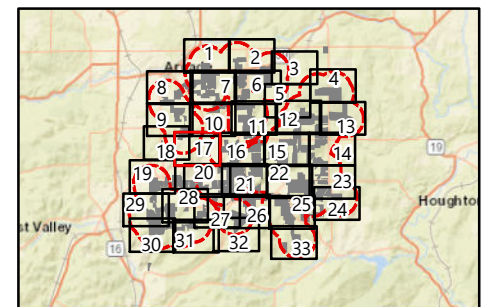


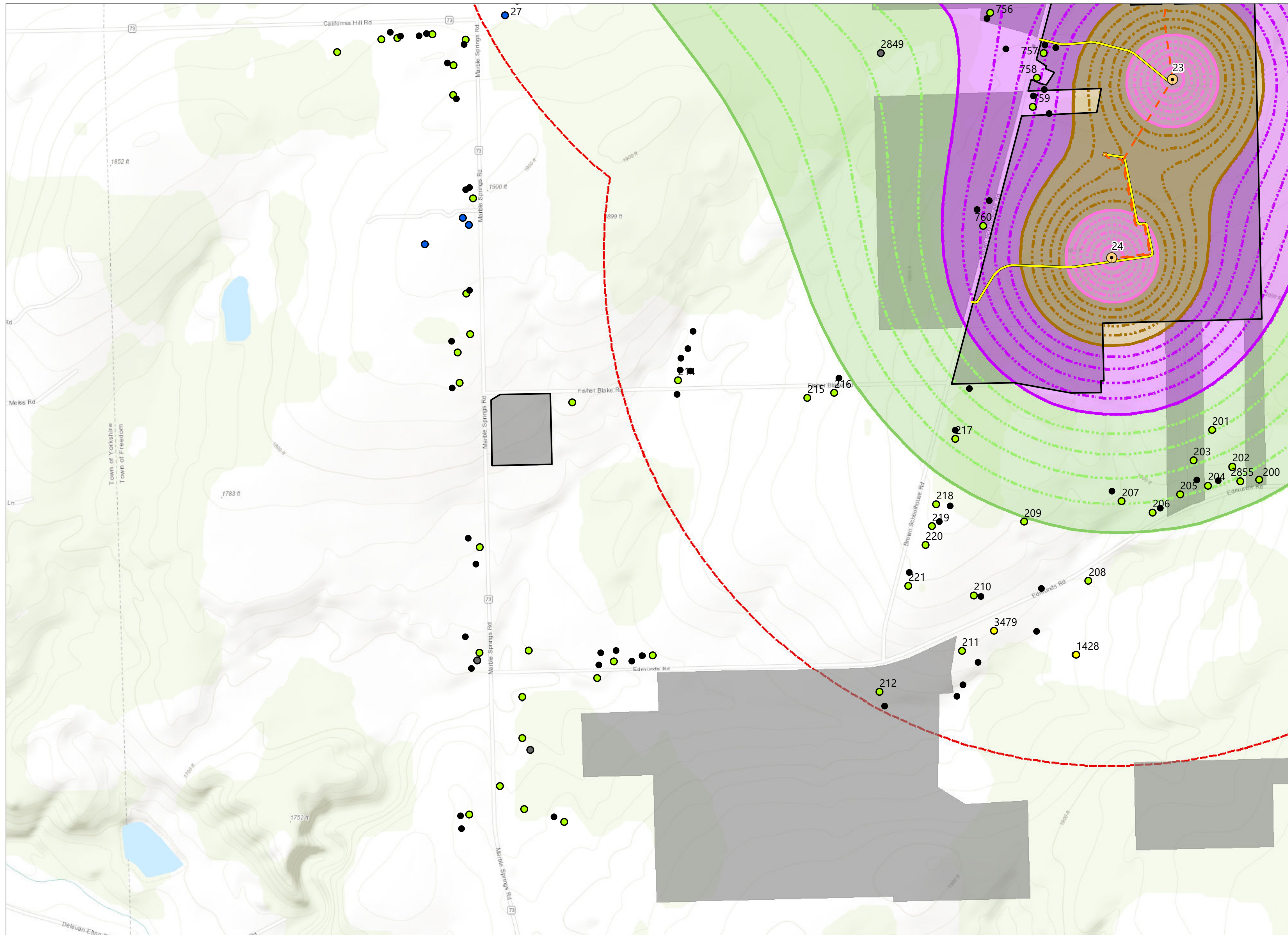
Alle-Catt Wind Farm

Towns of Arcade, Centerville, Farmersville, Freedom, and Rushford Allegany, Cattaraugus, and Wyoming Counties, New York

Article 10 Amendment
Case No. 17-F-0282

- Category 1 Receptor
 - Category 2 Receptor
 - Unknown Structure
 - Commercial, Institution, School or Public Structure
 - Other Structure
 - WTG
 - Collection Line
 - Access Road
 - Participating Parcel
 - Facility Site (See Note 1)
 - 1-mile Study Area
- ESL Noise Contours (dBA)
- 35-40 dBA
 - 40-45 dBA
 - 45-50 dBA
 - 50 dBA or Higher



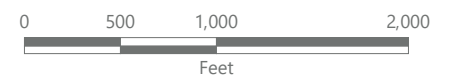
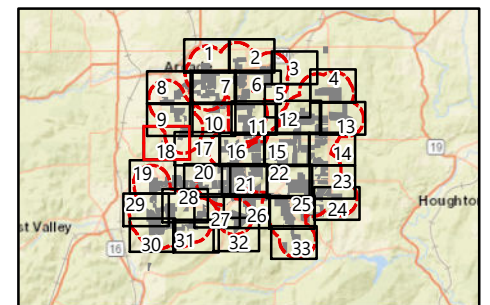


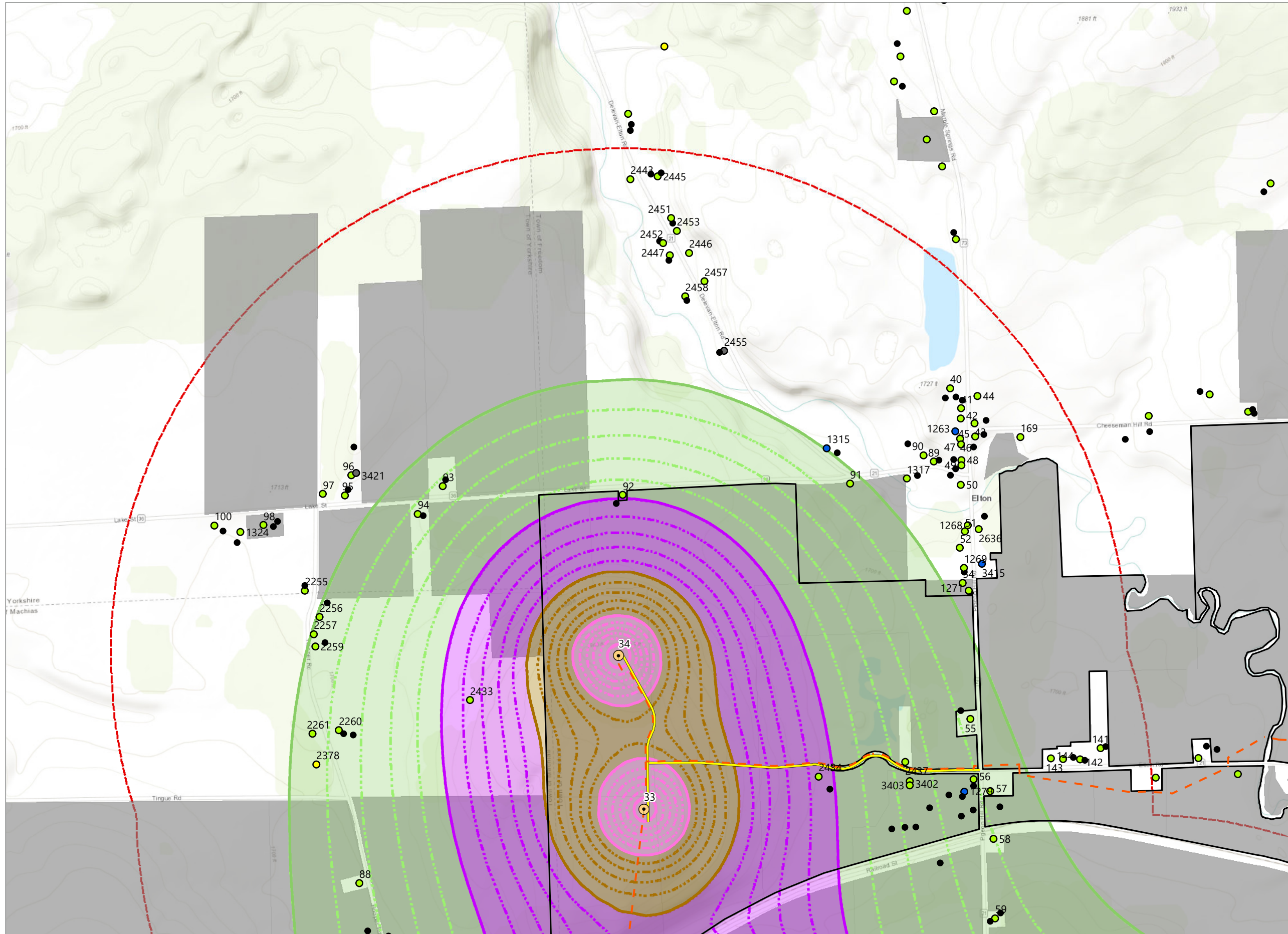
Alle-Catt Wind Farm

Towns of Arcade, Centerville, Farmersville, Freedom, and Rushford Allegany, Cattaraugus, and Wyoming Counties, New York

Article 10 Amendment
Case No. 17-F-0282

- Category 1 Receptor
- Category 2 Receptor
- Unknown Structure
- Commercial, Institution, School or Public Structure
- Other Structure
- ESL Noise Contours (dBA)
 - 35-40 dBA
 - 40-45 dBA
 - 45-50 dBA
 - 50 dBA or Higher
- WTG
- Collection Line
- Access Road
- ADLS Pad
- Participating Parcel
- Facility Site (See Note 1)
- 1-mile Study Area



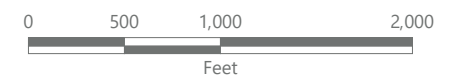
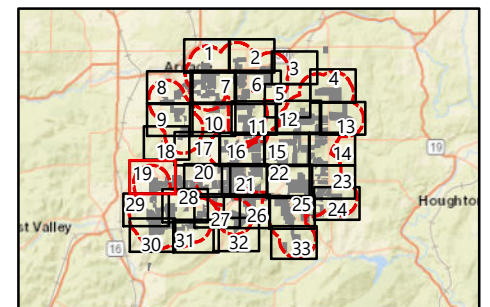


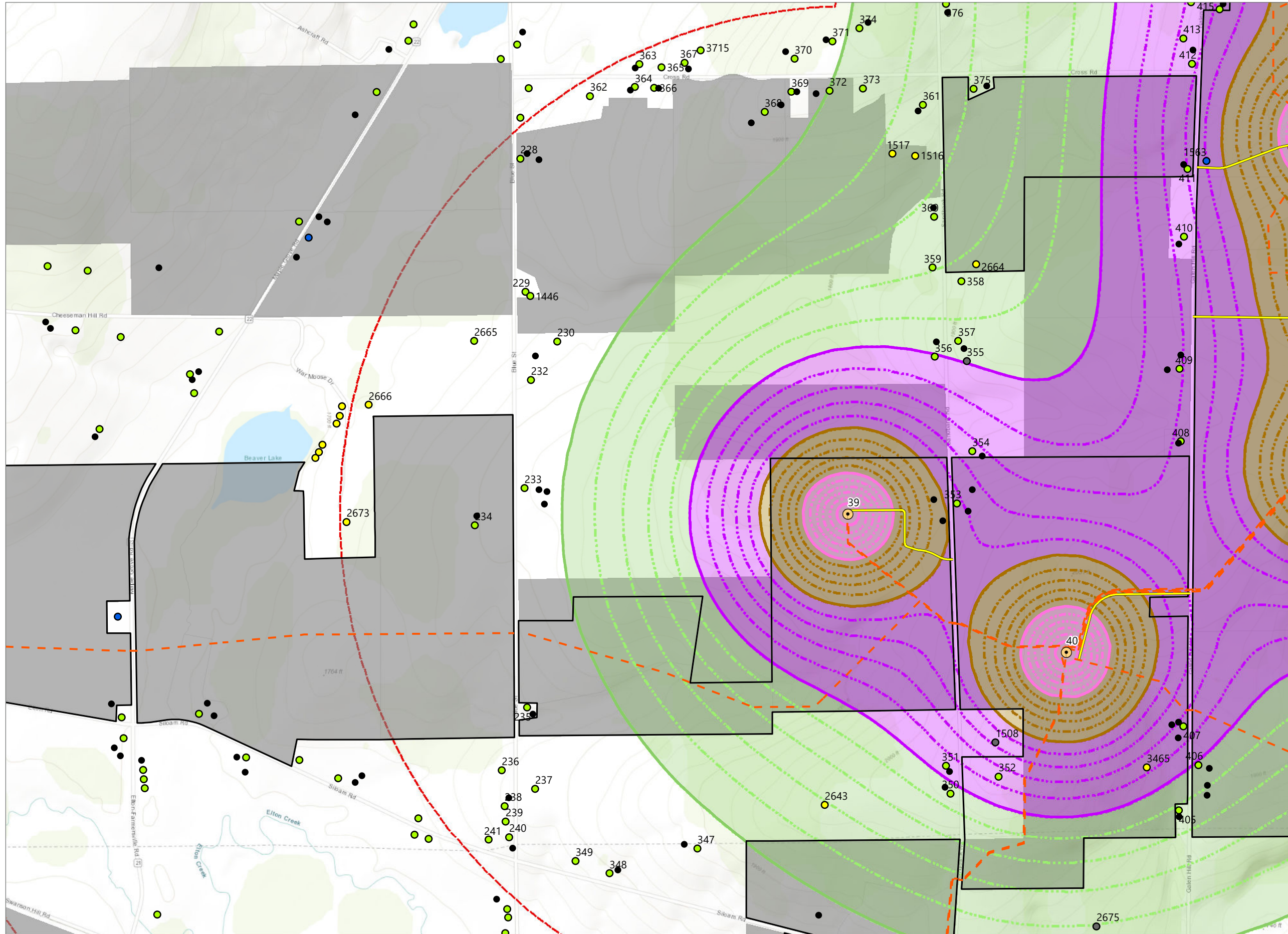
Alle-Catt Wind Farm

Towns of Arcade, Centerville, Farmersville, Freedom, and Rushford Allegany, Cattaraugus, and Wyoming Counties, New York

Article 10 Amendment
Case No. 17-F-0282

- Category 1 Receptor
- Category 2 Receptor
- Unknown Structure
- Commercial, Institution, School or Public Structure
- Other Structure
- ESL Noise Contours (dBA)
 - 35-40 dBA
 - 40-45 dBA
 - 45-50 dBA
 - 50 dBA or Higher
- WTG
- Collection Line
- Access Road
- Participating Parcel
- Facility Site (See Note 1)
- 1-mile Study Area



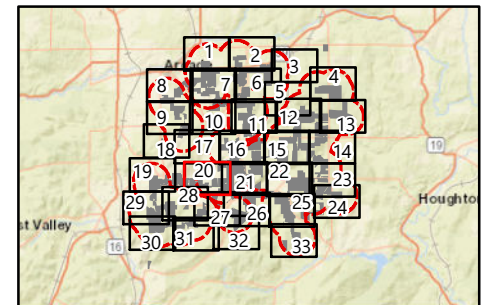


Alle-Catt Wind Farm

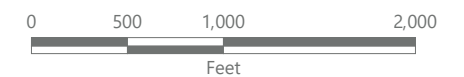
Towns of Arcade, Centerville, Farmersville, Freedom, and Rushford Allegany, Cattaraugus, and Wyoming Counties, New York

Article 10 Amendment
Case No. 17-F-0282

- Category 1 Receptor
 - Category 2 Receptor
 - Unknown Structure
 - Commercial, Institution, School or Public Structure
 - Other Structure
- ESL Noise Contours (dBA)
- 35-40 dBA
 - 40-45 dBA
 - 45-50 dBA
 - 50 dBA or Higher
- WTG
 - Collection Line
 - Access Road
 - Participating Parcel
 - Facility Site (See Note 1)
 - 1-mile Study Area

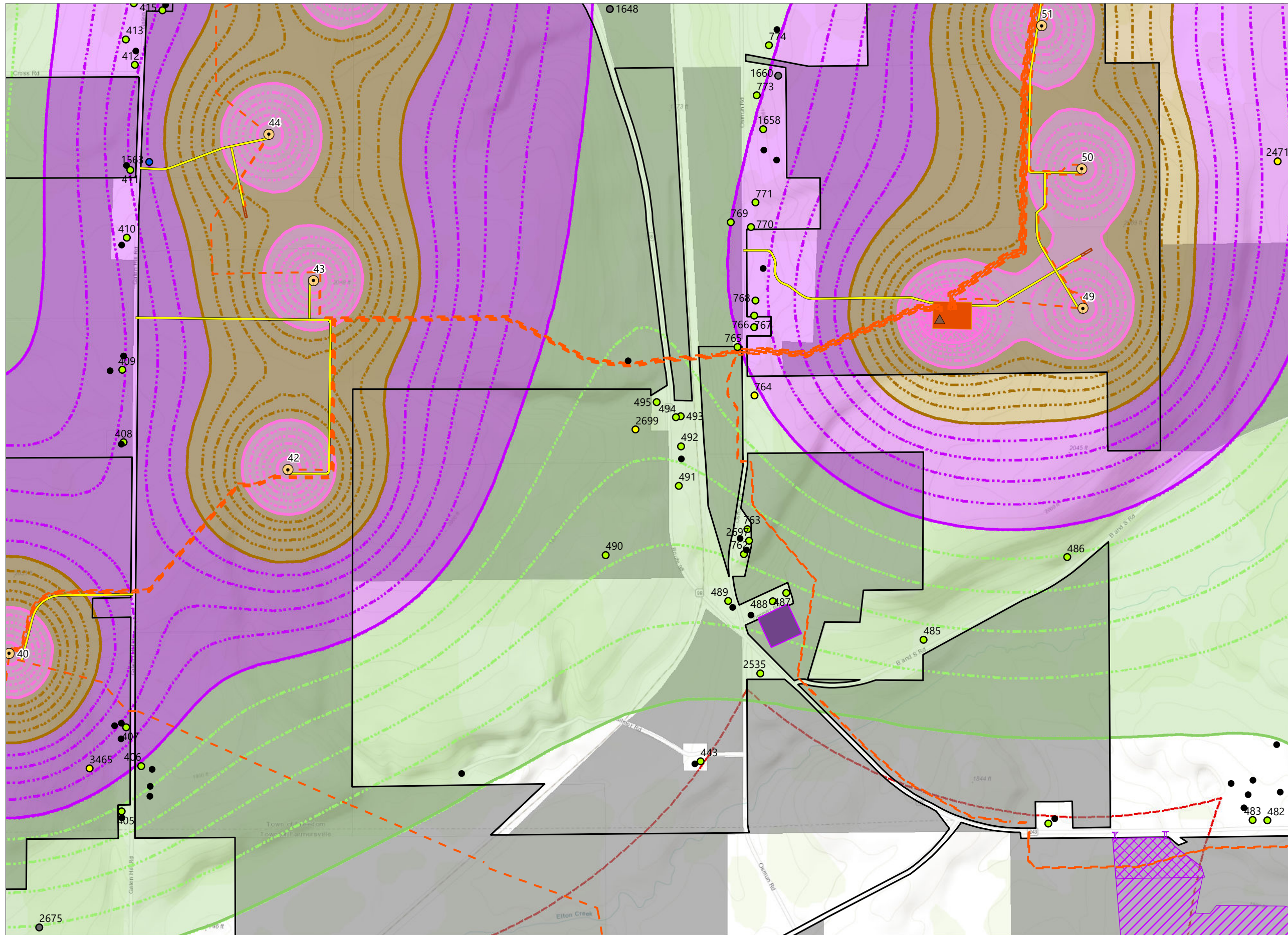


Sheet 20 of 33



Prepared January 24, 2023
(1) Facility Site Boundary based on County GIS dataset.
Basemap: Esri "World Topographic Map" map service

Figure 6: Updated Figure 19-1. Noise Contours

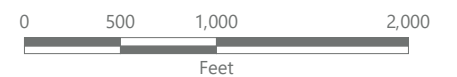
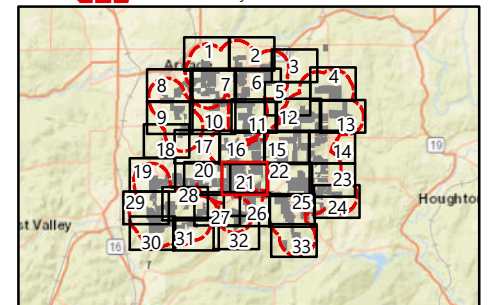


Alle-Catt Wind Farm

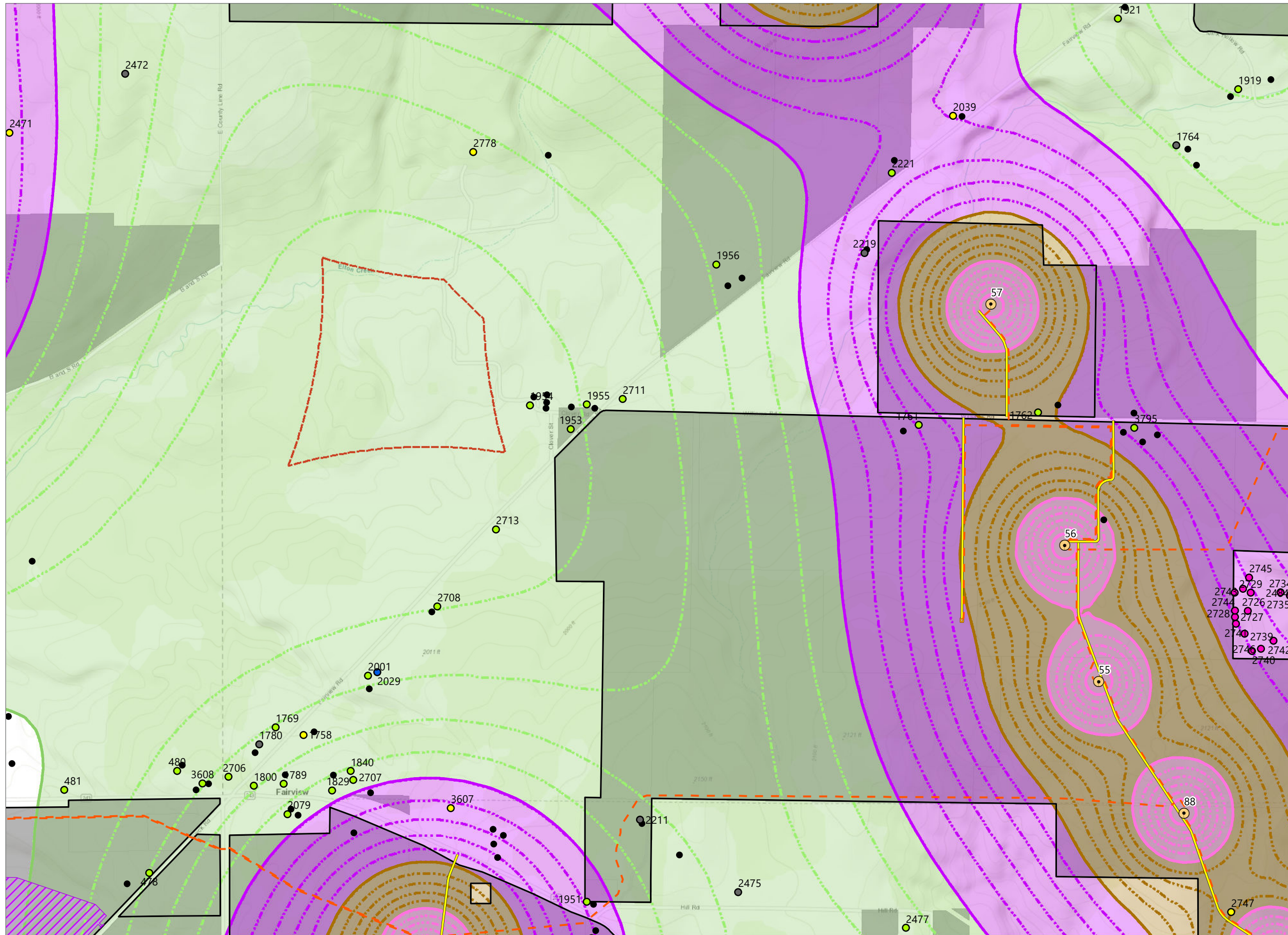
Towns of Arcade, Centerville, Farmersville, Freedom, and Rushford Allegany, Cattaraugus, and Wyoming Counties, New York

Article 10 Amendment
Case No. 17-F-0282

- Category 1 Receptor
- Category 2 Receptor
- Unknown Structure
- Commercial, Institution, School or Public Structure
- Other Structure
- ESL Noise Contours (dBA)
 - 35-40 dBA
 - 40-45 dBA
 - 45-50 dBA
 - 50 dBA or Higher
- WTG
- ▲ Microwave Tower
- Collection Line
- Access Road
- Collection Substation
- O&M Building
- Laydown Area
- Batch Plant
- Identflight Pad
- Participating Parcel
- Facility Site (See Note 1)
- 1-mile Study Area



Prepared January 24, 2023
(1) Facility Site Boundary based on County GIS dataset.
Basemap: Esri "World Topographic Map" map service

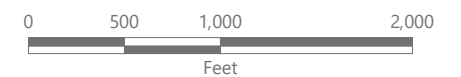
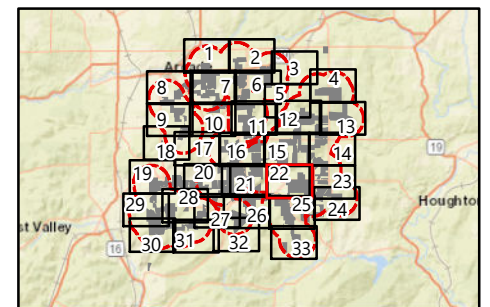


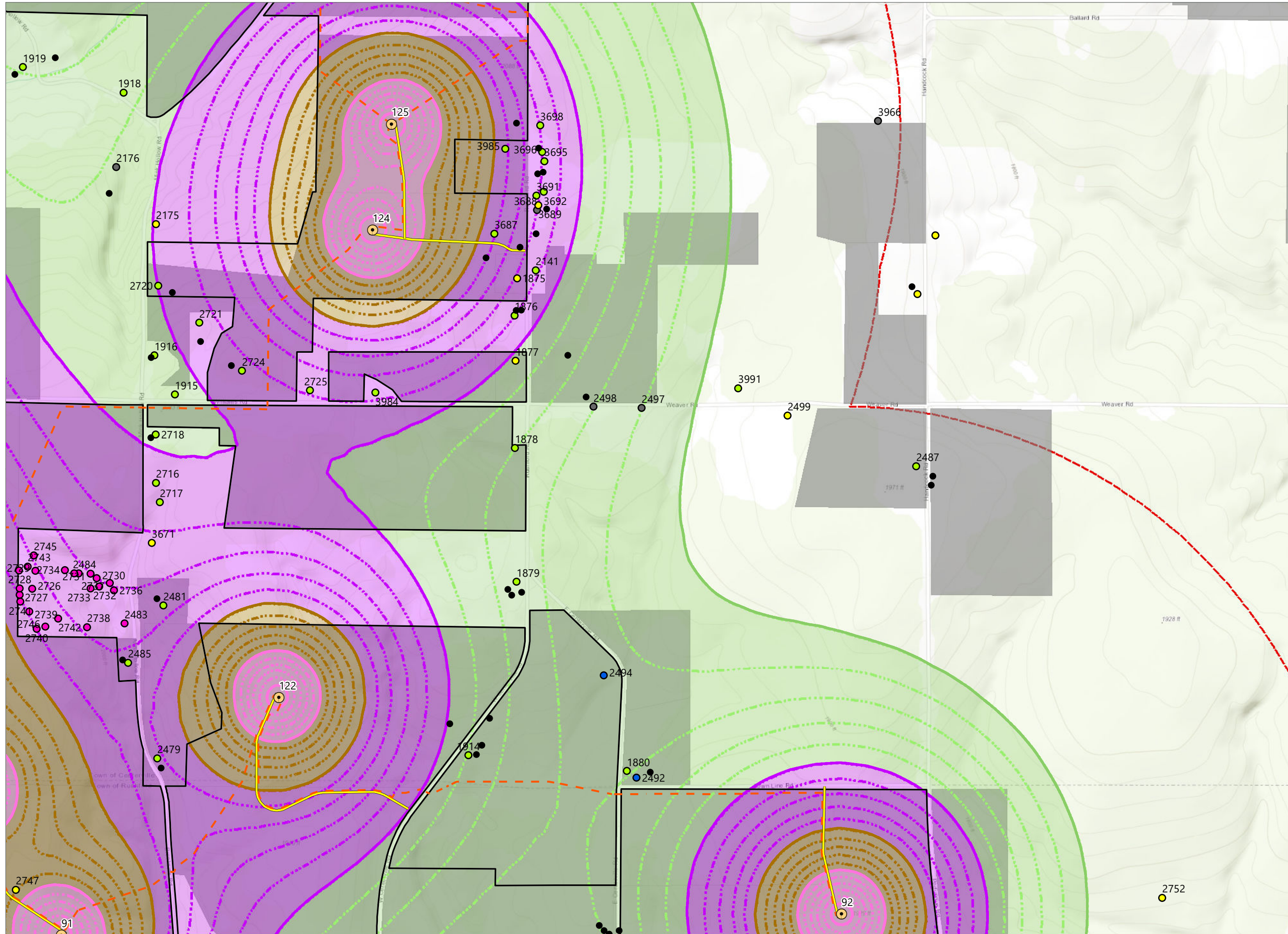
Alle-Catt Wind Farm

Towns of Arcade, Centerville, Farmersville, Freedom, and Rushford Allegany, Cattaraugus, and Wyoming Counties, New York

Article 10 Amendment
Case No. 17-F-0282

- Category 1 Receptor
 - Category 2 Receptor
 - Category 3 Receptor
 - Unknown Structure
 - Commercial, Institution, School or Public Structure
 - Other Structure
- ESL Noise Contours (dBA)
- 35-40 dBA
 - 40-45 dBA
 - 45-50 dBA
 - 50 dBA or Higher
- WTG
 - Collection Line
 - Access Road
 - Laydown Area
 - ADLS Pad
 - Participating Parcel
 - Facility Site (See Note 1)
 - 1-mile Study Area



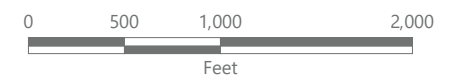
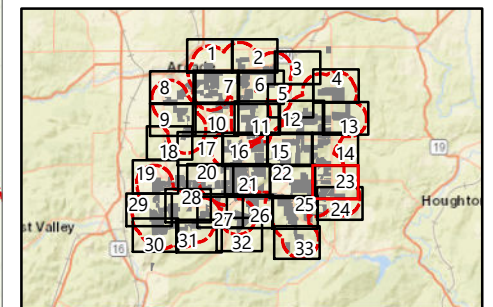


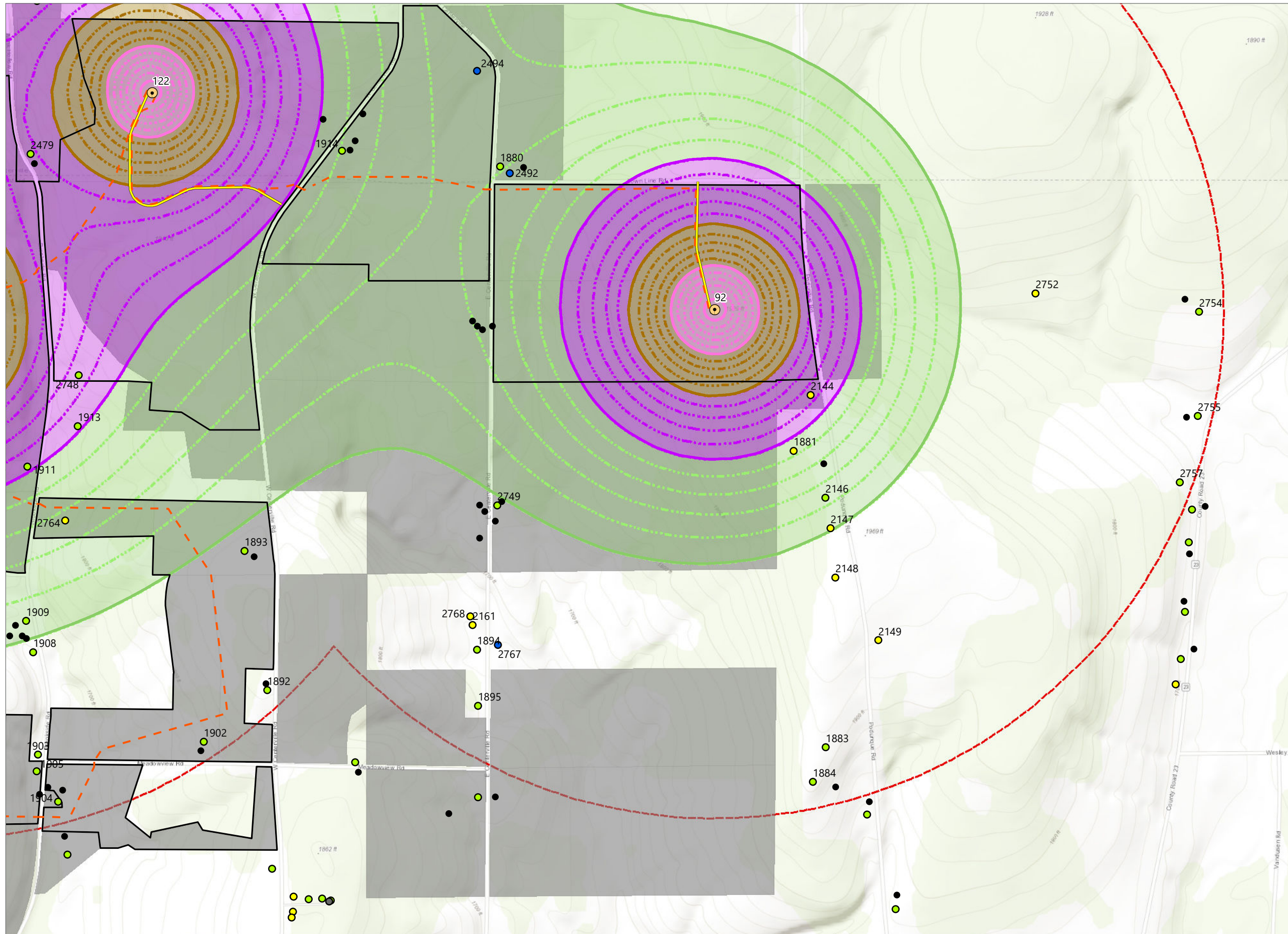
Alle-Catt Wind Farm

Towns of Arcade, Centerville, Farmersville, Freedom, and Rushford
 Allegany, Cattaraugus, and Wyoming
 Counties, New York

Article 10 Amendment
Case No. 17-F-0282

- Category 1 Receptor
 - Category 2 Receptor
 - Category 3 Receptor
 - Unknown Structure
 - Commercial, Institution, School or Public Structure
 - Other Structure
- ESL Noise Contours (dBA)
- 35-40 dBA
 - 40-45 dBA
 - 45-50 dBA
 - 50 dBA or Higher
- WTG
 - Collection Line
 - Access Road
 - Participating Parcel
 - Facility Site (See Note 1)
 - 1-mile Study Area



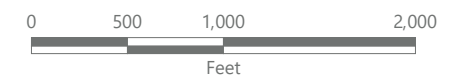
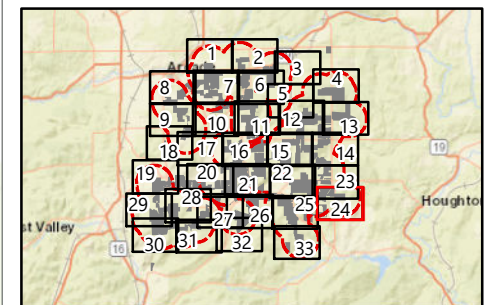


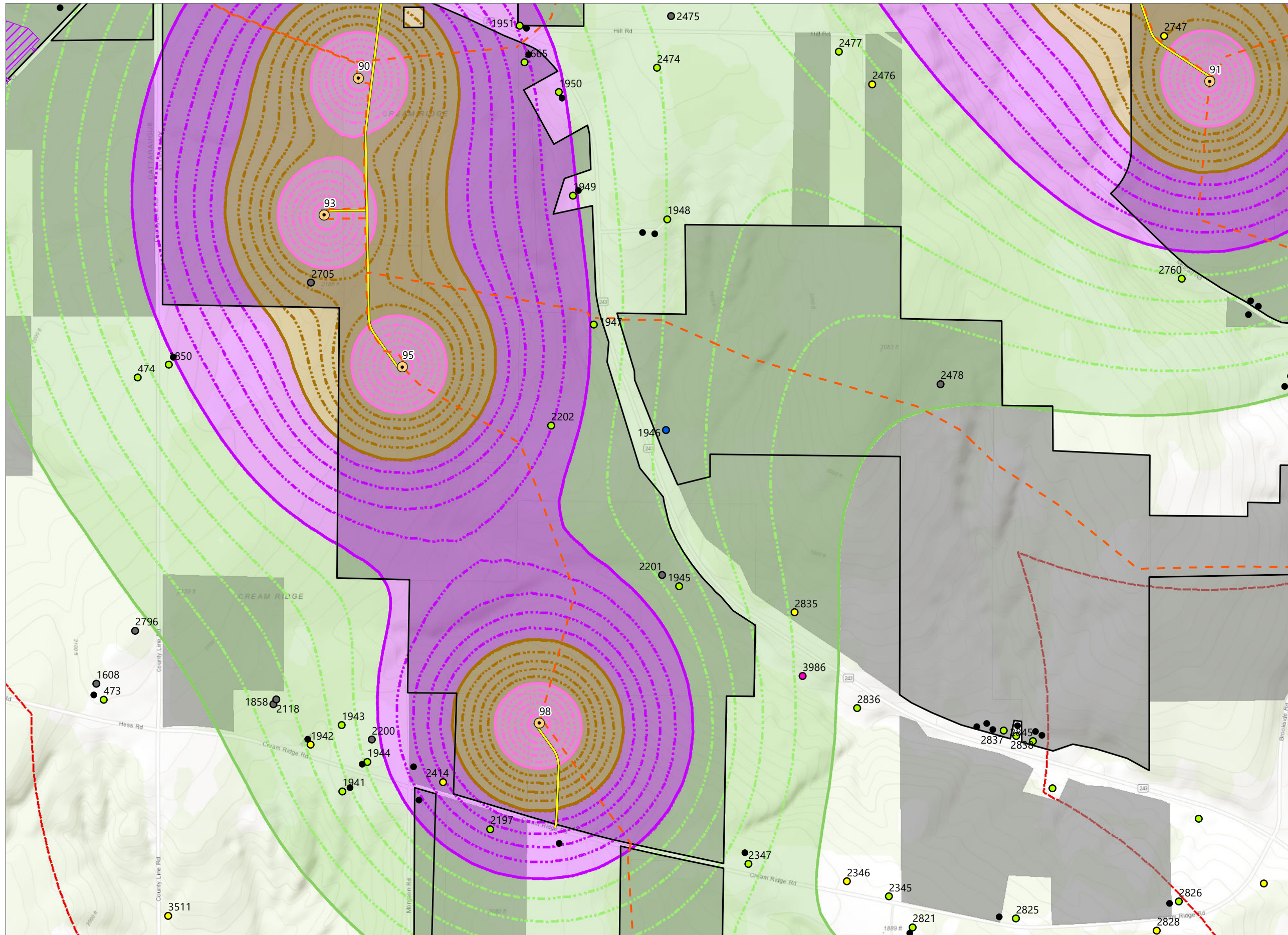
Alle-Catt Wind Farm

Towns of Arcade, Centerville, Farmersville, Freedom, and Rushford
 Allegany, Cattaraugus, and Wyoming
 Counties, New York

Article 10 Amendment
Case No. 17-F-0282

- Category 1 Receptor
 - Category 2 Receptor
 - Unknown Structure
 - Commercial, Institution, School or Public Structure
 - Other Structure
 - WTG
 - Collection Line
 - Access Road
 - Participating Parcel
 - Facility Site (See Note 1)
 - 1-mile Study Area
- ESL Noise Contours (dBA)
- 35-40 dBA
 - 40-45 dBA
 - 45-50 dBA
 - 50 dBA or Higher



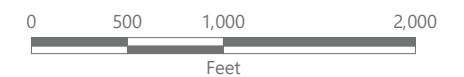
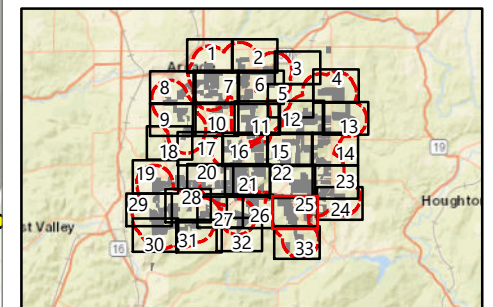


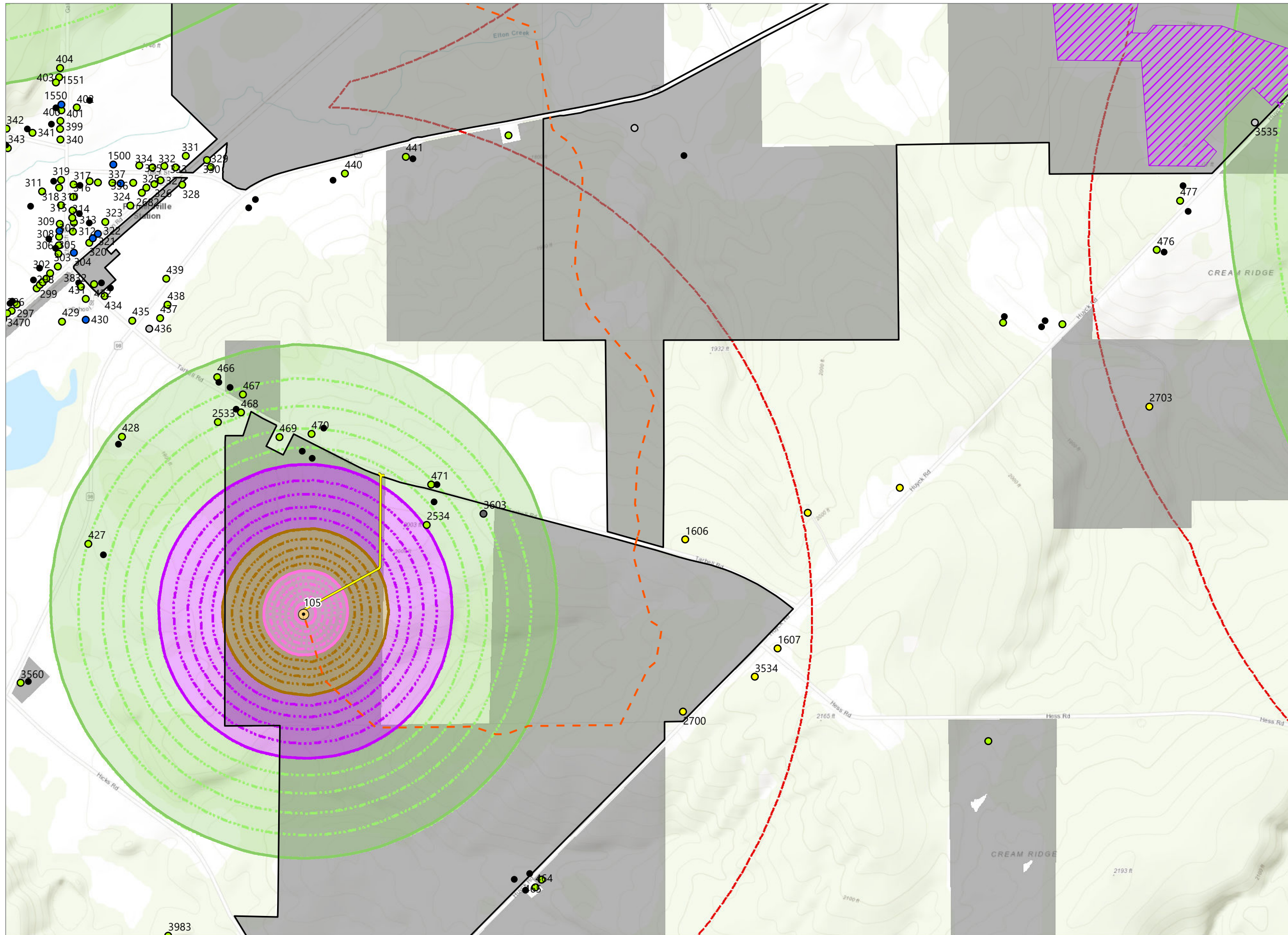
Alle-Catt Wind Farm

Towns of Arcade, Centerville, Farmersville, Freedom, and Rushford Allegany, Cattaraugus, and Wyoming Counties, New York

Article 10 Amendment
Case No. 17-F-0282

- Category 1 Receptor
- Category 2 Receptor
- Category 3 Receptor
- Unknown Structure
- Commercial, Institution, School or Public Structure
- Other Structure
- ESL Noise Contours (dBA)
 - 35-40 dBA
 - 40-45 dBA
 - 45-50 dBA
 - 50 dBA or Higher
- WTG
- Collection Line
- Access Road
- Laydown Area
- Participating Parcel
- Facility Site (See Note 1)
- 1-mile Study Area



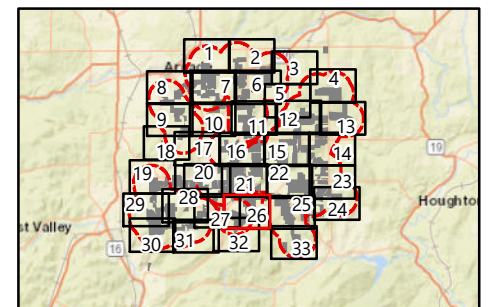


Alle-Catt Wind Farm

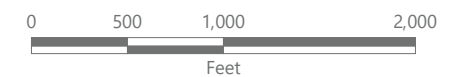
Towns of Arcade, Centerville, Farmersville, Freedom, and Rushford Allegany, Cattaraugus, and Wyoming Counties, New York

**Article 10 Amendment
Case No. 17-F-0282**

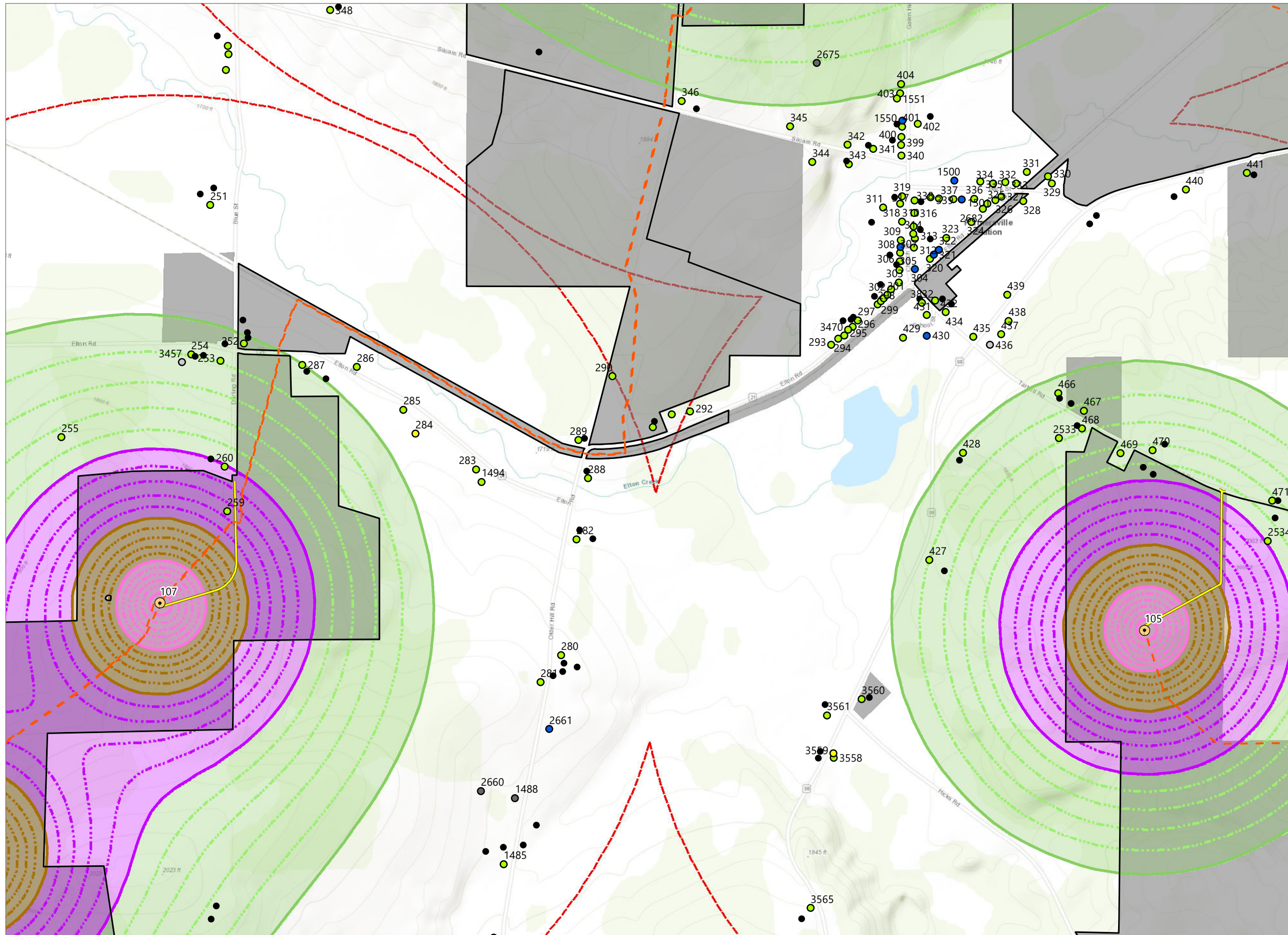
- Category 1 Receptor
- Category 2 Receptor
- Category 4 Receptor
- Unknown Structure
- Commercial, Institution, School or Public Structure
- Other Structure
- ESL Noise Contours (dBA)
 - 35-40 dBA
 - 40-45 dBA
 - 45-50 dBA
 - 50 dBA or Higher
- WTG
- Collection Line
- Access Road
- Laydown Area
- Participating Parcel
- Facility Site (See Note 1)
- 1-mile Study Area



Sheet 26 of 33



Prepared January 24, 2023
 (1) Facility Site Boundary based on County GIS dataset.
 Basemap: Esri "World Topographic Map" map service

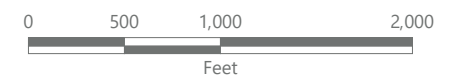
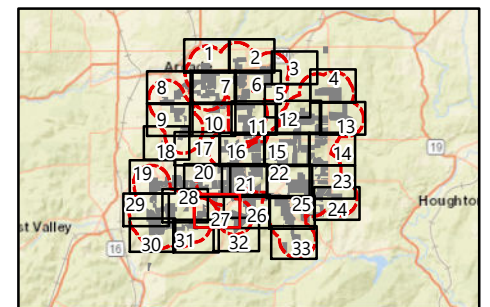


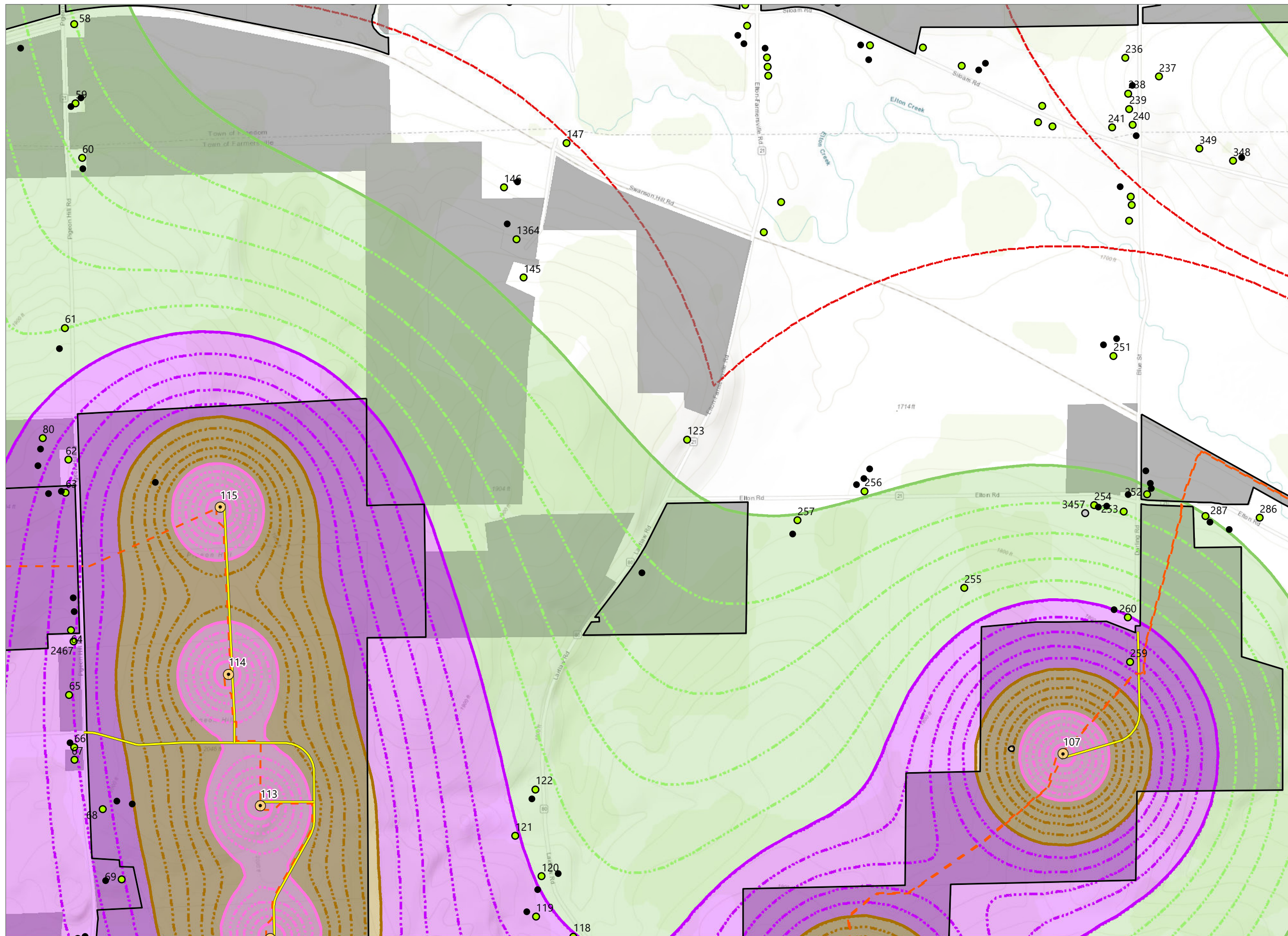
Alle-Catt Wind Farm

Towns of Arcade, Centerville, Farmersville, Freedom, and Rushford Allegany, Cattaraugus, and Wyoming Counties, New York

Article 10 Amendment
Case No. 17-F-0282

- Category 1 Receptor
 - Category 2 Receptor
 - Category 4 Receptor
 - Unknown Structure
 - Commercial, Institution, School or Public Structure
 - Other Structure
- ESL Noise Contours (dBA)
- 35-40 dBA
 - 40-45 dBA
 - 45-50 dBA
 - 50 dBA or Higher
- WTG
 - Collection Line
 - Access Road
 - Participating Parcel
 - Facility Site (See Note 1)
 - 1-mile Study Area



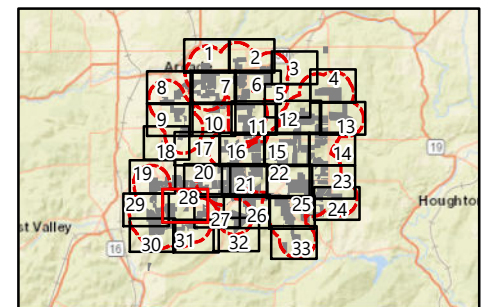


Alle-Catt Wind Farm

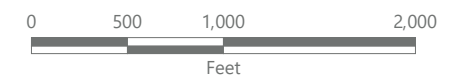
Towns of Arcade, Centerville, Farmersville, Freedom, and Rushford Allegany, Cattaraugus, and Wyoming Counties, New York

Article 10 Amendment
Case No. 17-F-0282

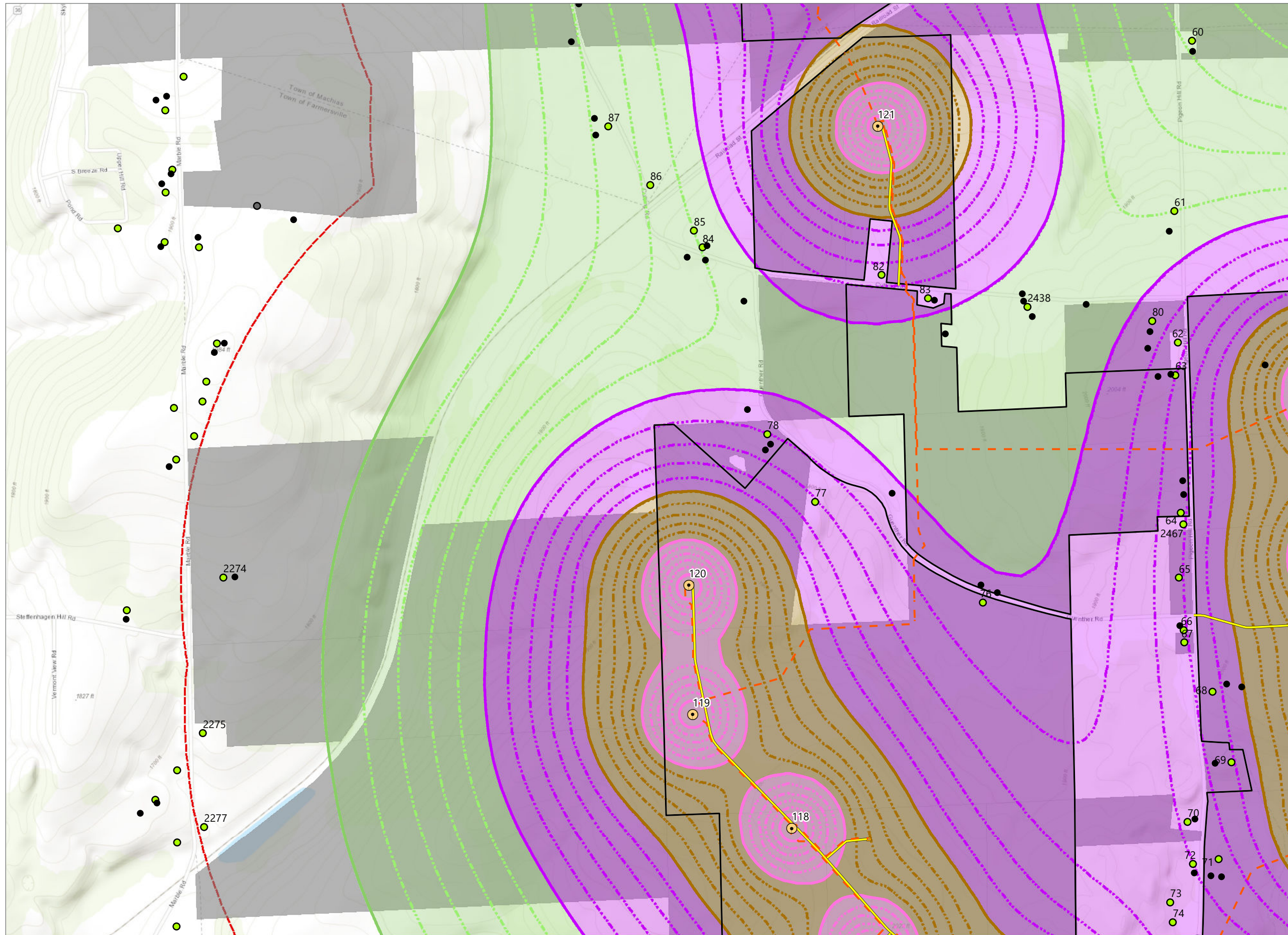
- Category 1 Receptor
- Category 4 Receptor
- Other Structure
- ESL Noise Contours (dBA)
 - 35-40 dBA
 - 40-45 dBA
 - 45-50 dBA
 - 50 dBA or Higher
- WTG
- Collection Line
- Access Road
- Participating Parcel
- Facility Site (See Note 1)
- 1-mile Study Area



Sheet 28 of 33



Prepared January 24, 2023
(1) Facility Site Boundary based on County GIS dataset.
Basemap: Esri "World Topographic Map" map service

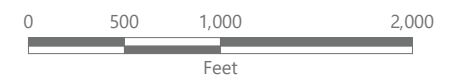
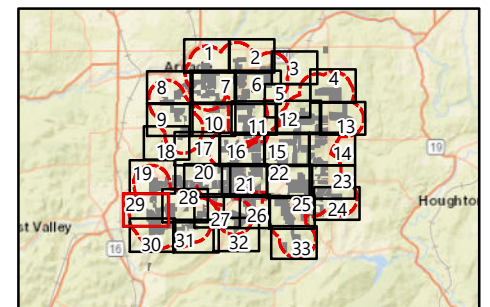


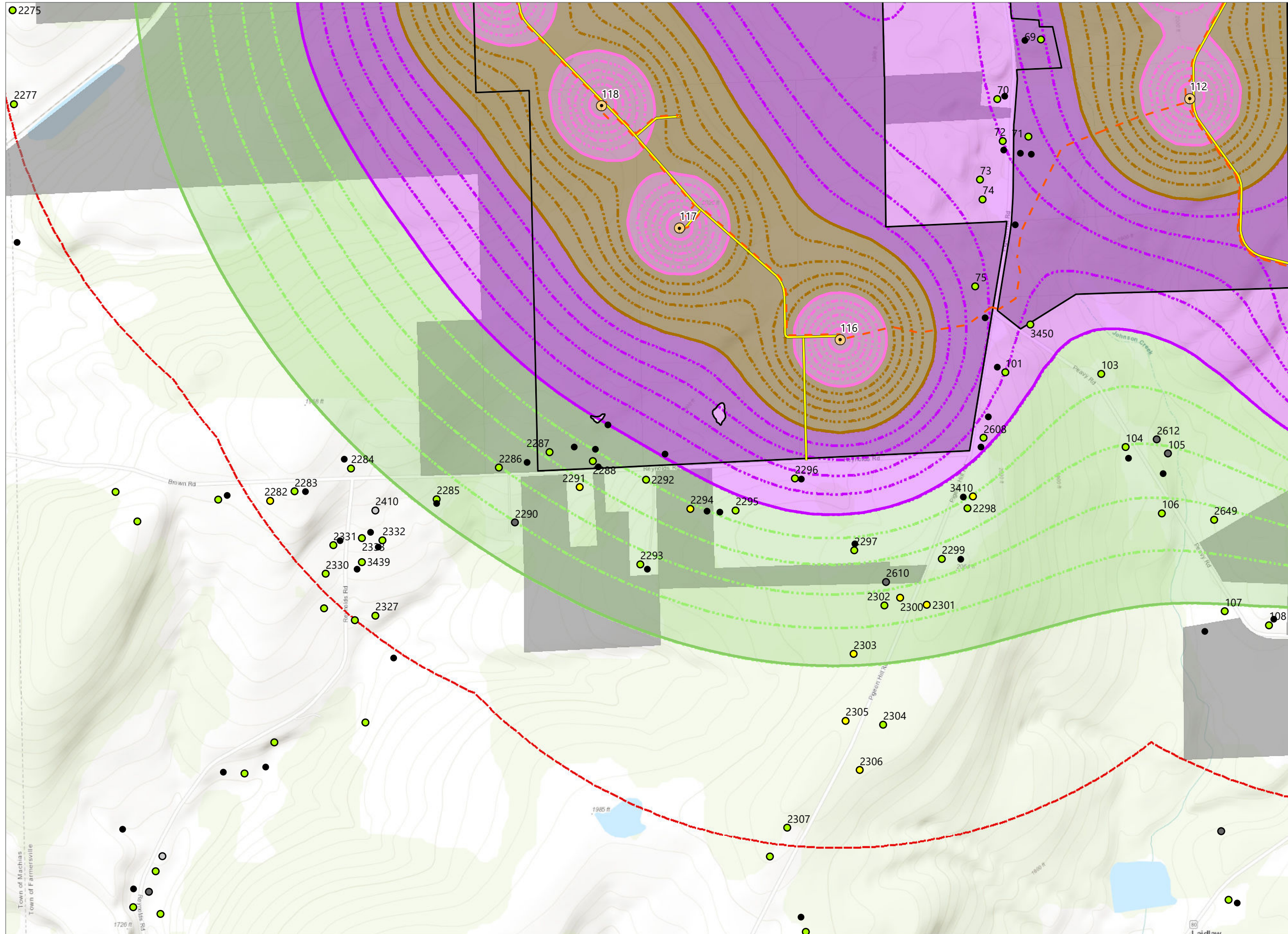
Alle-Catt Wind Farm

Towns of Arcade, Centerville, Farmersville, Freedom, and Rushford
Allegany, Cattaraugus, and Wyoming
Counties, New York

Article 10 Amendment
Case No. 17-F-0282

- Category 1 Receptor
- Unknown Structure
- Other Structure
- ESL Noise Contours (dBA)
 - 35-40 dBA
 - 40-45 dBA
 - 45-50 dBA
 - 50 dBA or Higher
- WTG
- Collection Line
- Access Road
- ADLS Pad
- Participating Parcel
- Facility Site (See Note 1)
- 1-mile Study Area



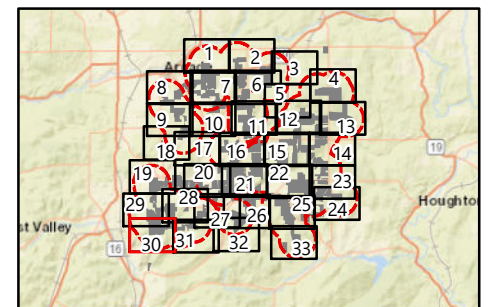


Alle-Catt Wind Farm

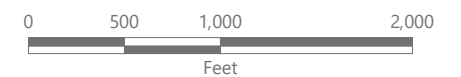
Towns of Arcade, Centerville, Farmersville, Freedom, and Rushford Allegany, Cattaraugus, and Wyoming Counties, New York

Article 10 Amendment
Case No. 17-F-0282

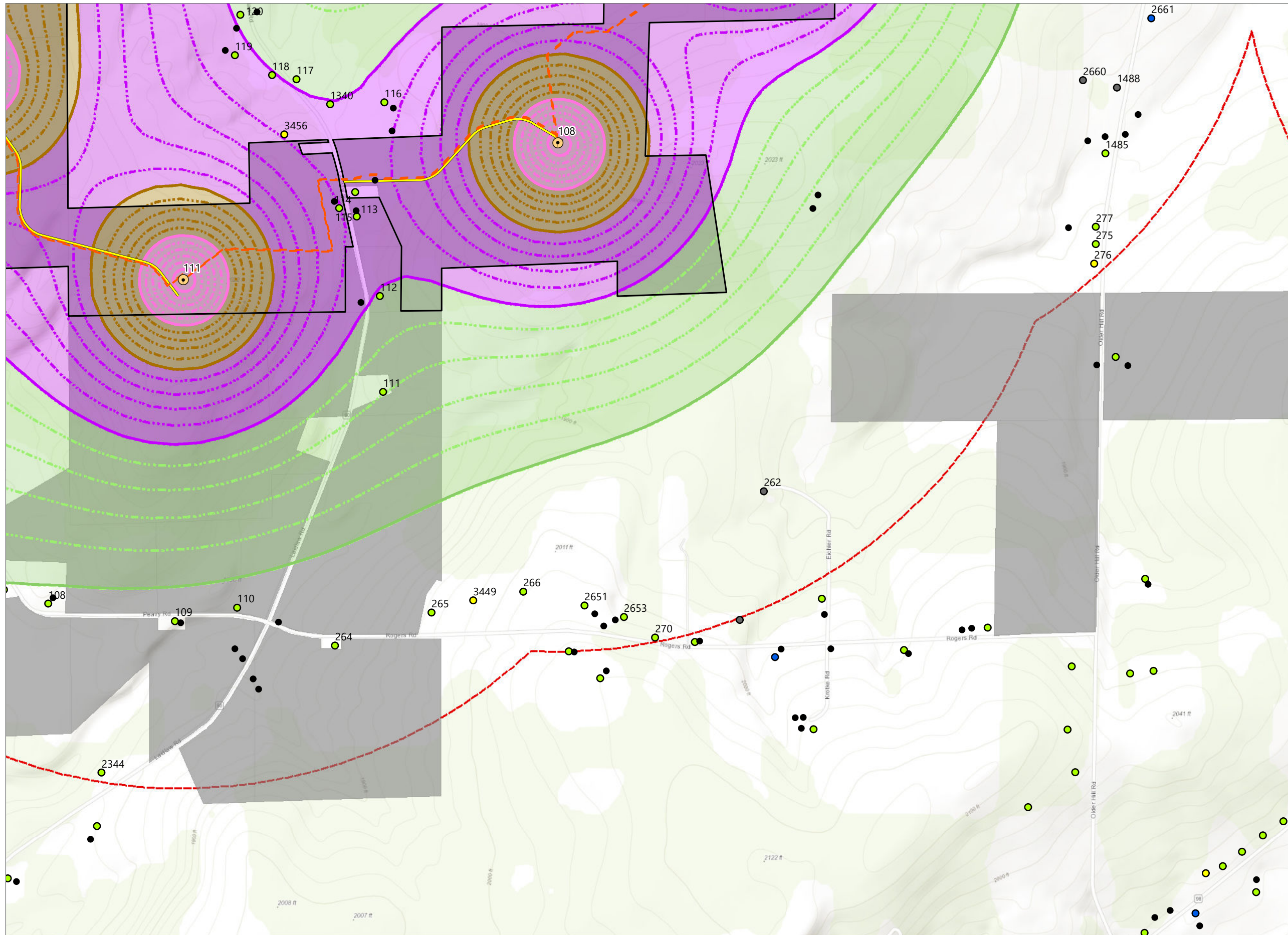
- Category 1 Receptor
 - Category 2 Receptor
 - Category 4 Receptor
 - Unknown Structure
 - Other Structure
- ESL Noise Contours (dBA)
- 35-40 dBA
 - 40-45 dBA
 - 45-50 dBA
 - 50 dBA or Higher
- WTG
 - Collection Line
 - Access Road
 - ADLS Pad
 - Participating Parcel
 - Facility Site (See Note 1)
 - 1-mile Study Area



Sheet 30 of 33



Prepared January 24, 2023
(1) Facility Site Boundary based on County GIS dataset.
Basemap: Esri "World Topographic Map" map service

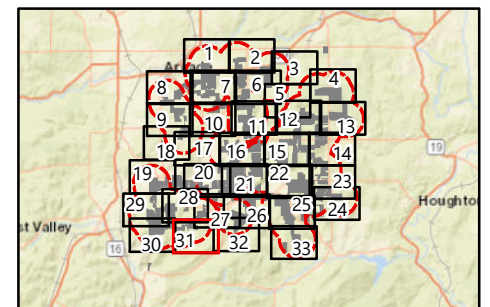


Alle-Catt Wind Farm

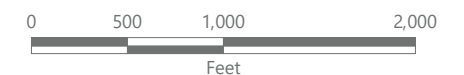
Towns of Arcade, Centerville, Farmersville, Freedom, and Rushford Allegany, Cattaraugus, and Wyoming Counties, New York

Article 10 Amendment
Case No. 17-F-0282

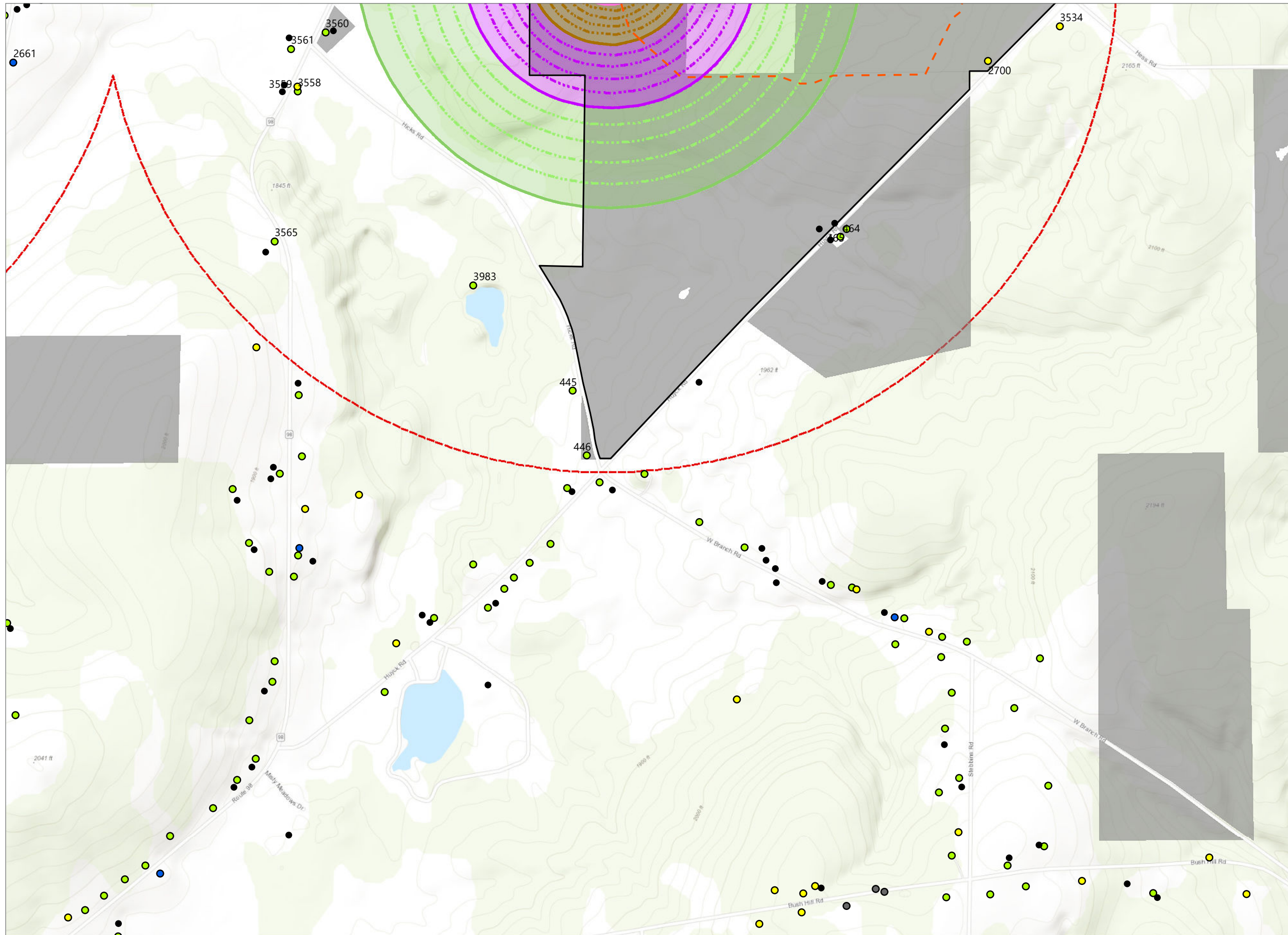
- Category 1 Receptor
- Category 2 Receptor
- Unknown Structure
- Commercial, Institution, School or Public Structure
- Other Structure
- ESL Noise Contours (dBA)
 - 35-40 dBA
 - 40-45 dBA
 - 45-50 dBA
 - 50 dBA or Higher
- WTG
- Collection Line
- Access Road
- Participating Parcel
- Facility Site (See Note 1)
- 1-mile Study Area



Sheet 31 of 33



Prepared January 24, 2023
(1) Facility Site Boundary based on County GIS dataset.
Basemap: Esri "World Topographic Map" map service

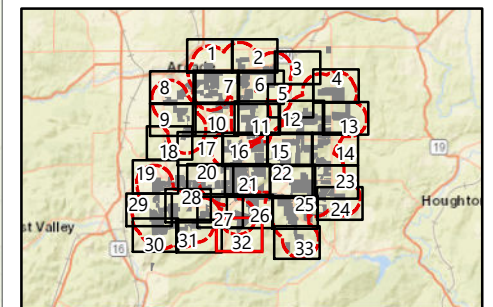


Alle-Catt Wind Farm

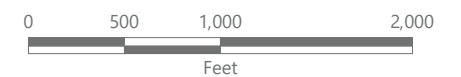
Towns of Arcade, Centerville, Farmersville, Freedom, and Rushford Allegany, Cattaraugus, and Wyoming Counties, New York

Article 10 Amendment
Case No. 17-F-0282

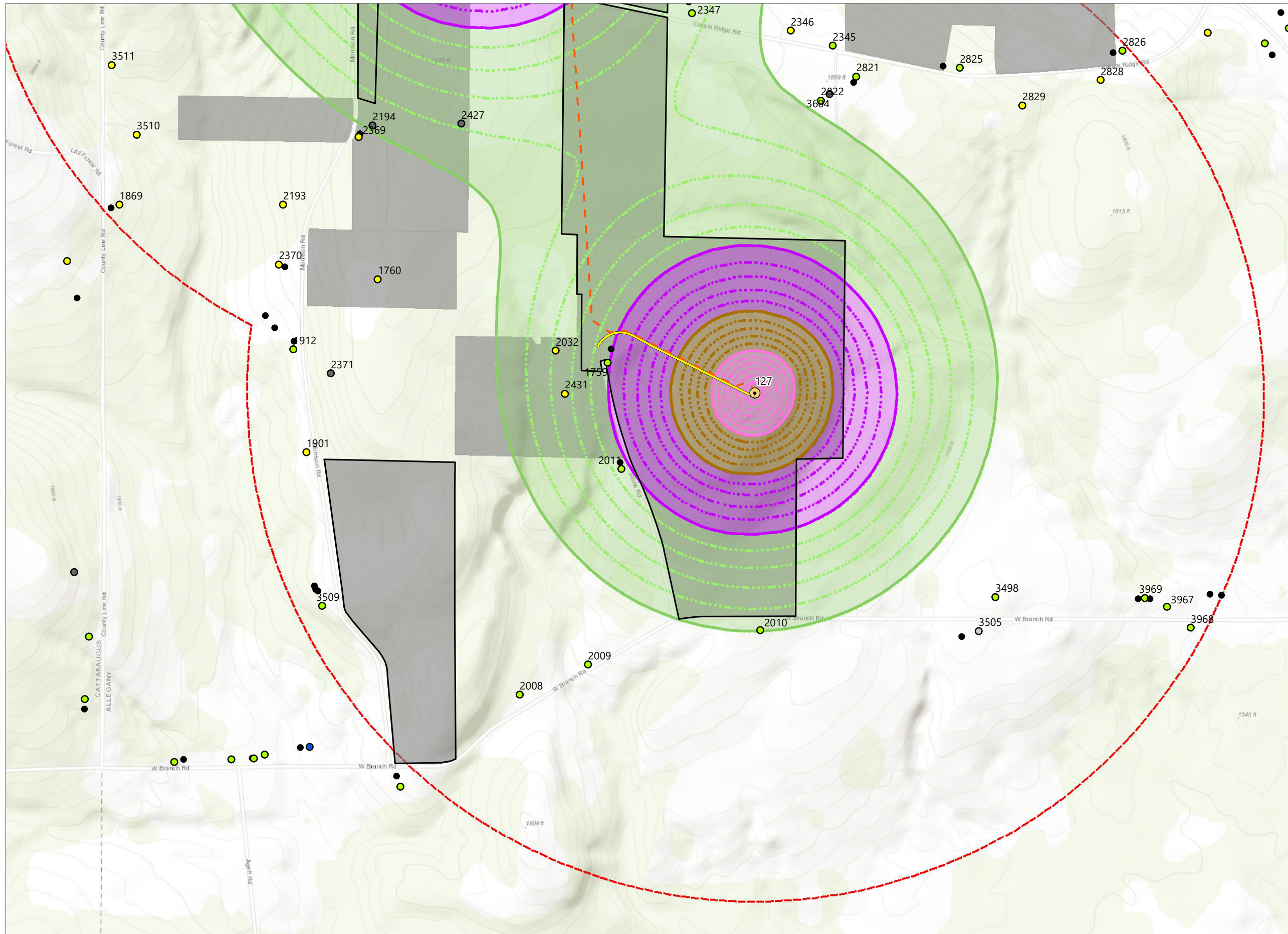
- Category 1 Receptor
 - Category 2 Receptor
 - Unknown Structure
 - Commercial, Institution, School or Public Structure
 - Other Structure
- ESL Noise Contours (dBA)
- 35-40 dBA
 - 40-45 dBA
 - 45-50 dBA
 - 50 dBA or Higher
- Collection Line
 - Participating Parcel
 - Facility Site (See Note 1)
 - 1-mile Study Area



Sheet 32 of 33



Prepared January 24, 2023
(1) Facility Site Boundary based on County GIS dataset.
Basemap: Esri "World Topographic Map" map service



Alle-Catt Wind Farm

Towns of Arcade, Centerville, Farmersville, Freedom, and Rushford Allegany, Cattaraugus, and Wyoming Counties, New York

Article 10 Amendment
Case No. 17-F-0282

- Category 1 Receptor
 - Category 2 Receptor
 - Category 4 Receptor
 - Unknown Structure
 - Commercial, Institution, School or Public Structure
 - Other Structure
- ESL Noise Contours (dBA)
- 35-40 dBA
 - 40-45 dBA
 - 45-50 dBA
 - 50 dBA or Higher
- WTG
 - Collection Line
 - Access Road
 - Participating Parcel
 - Facility Site (See Note 1)
 - 1-mile Study Area

