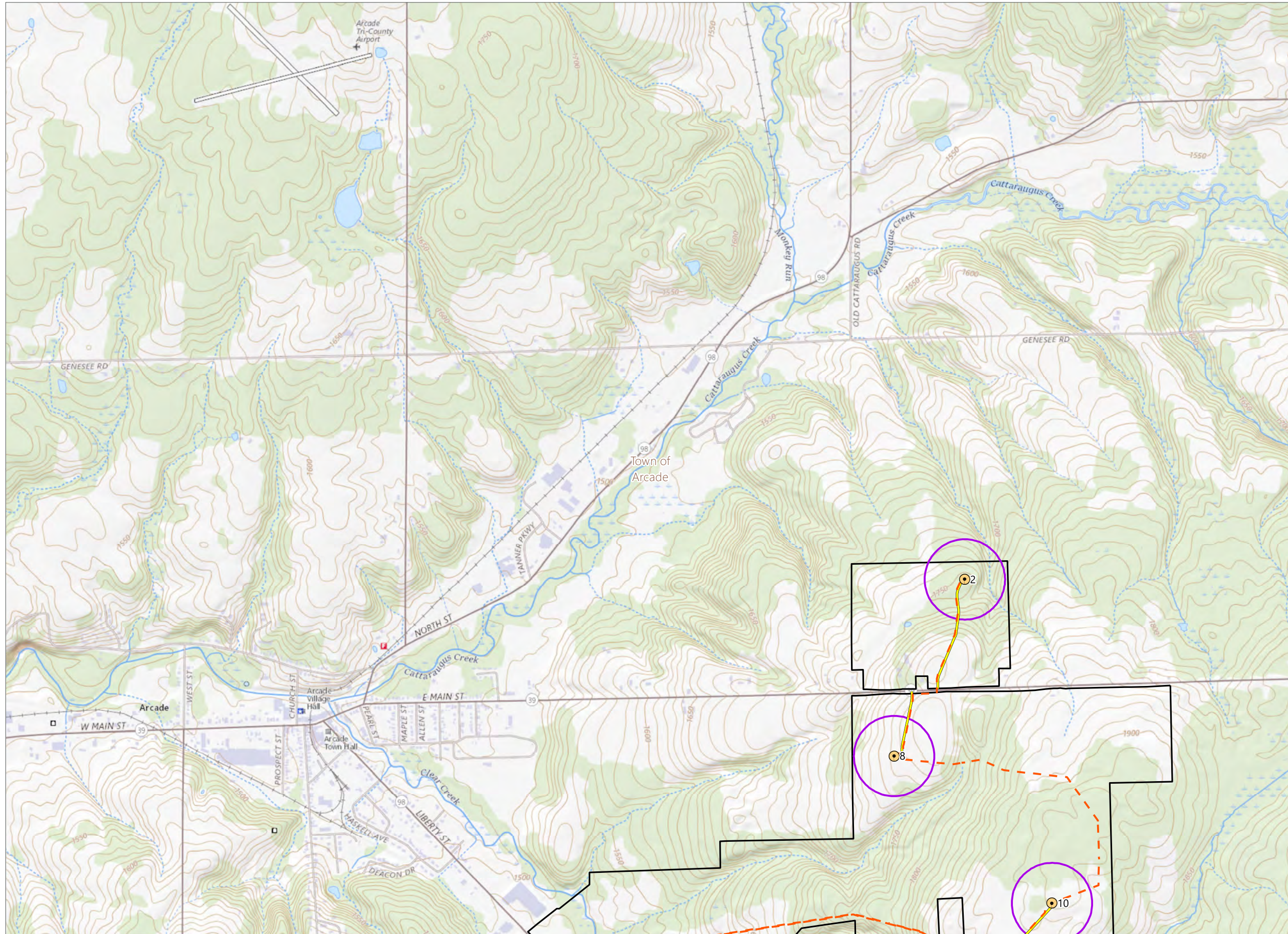


Figure 5: Updated Figure 6-1. Wind Turbine Setbacks

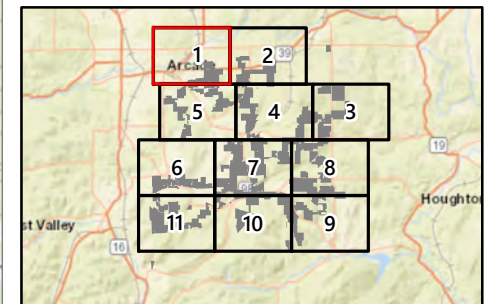


Alle-Catt Wind Farm

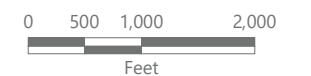
Towns of Arcade, Centerville, Farmersville, Freedom, and Rushford Allegany, Cattaraugus, and Wyoming Counties, New York

Certificate Amendment
Case No. 17-F-0282

- WTG Setback
- Town Boundary
- WTG
- Collection Line
- Access Road
- Facility Site (See Note 1)

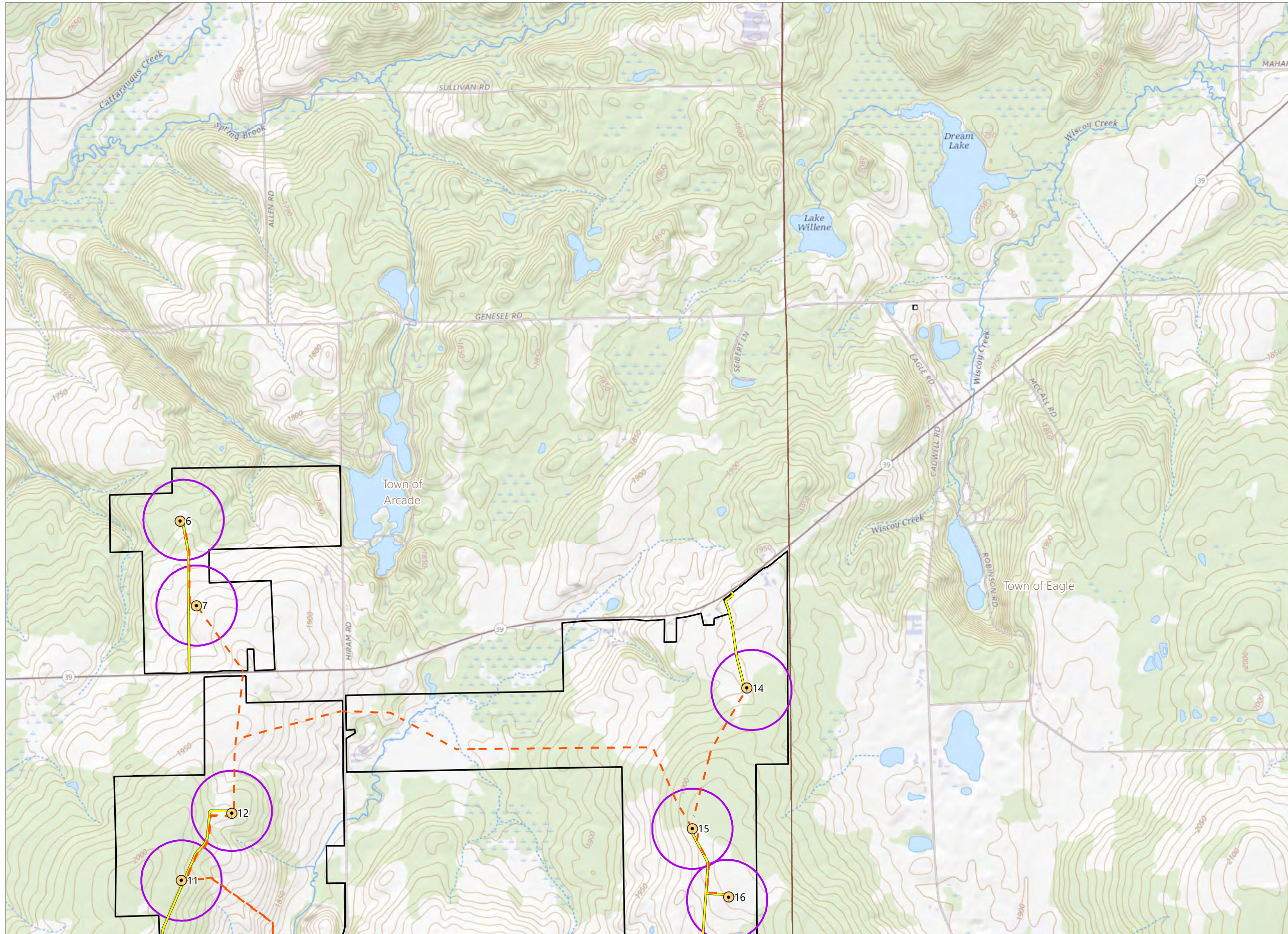


Sheet 1 of 13



Prepared January 23, 2023
Setback circles shown are based on the local laws in effect in each town. For towns without wind laws, circles are shown for ACWE's recommended setback of 1.1 x tip height.
(1) Facility Site Boundary based on County GIS dataset.
Basemap: Esri "USGS Topo" map service

Figure 5: Updated Figure 6-1. Wind Turbine Setbacks

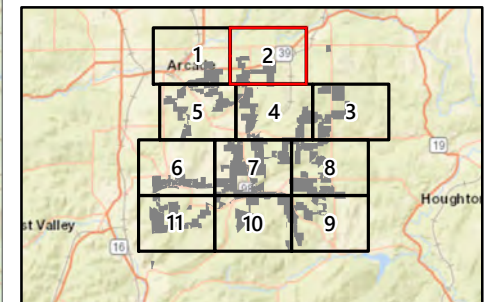


Alle-Catt Wind Farm

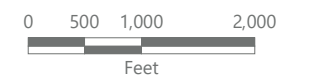
Towns of Arcade, Centerville, Farmersville, Freedom, and Rushford Allegany, Cattaraugus, and Wyoming Counties, New York

**Certificate Amendment
Case No. 17-F-0282**

- WTG Setback
- Town Boundary
- WTG
- Collection Line
- Access Road
- Facility Site (See Note 1)

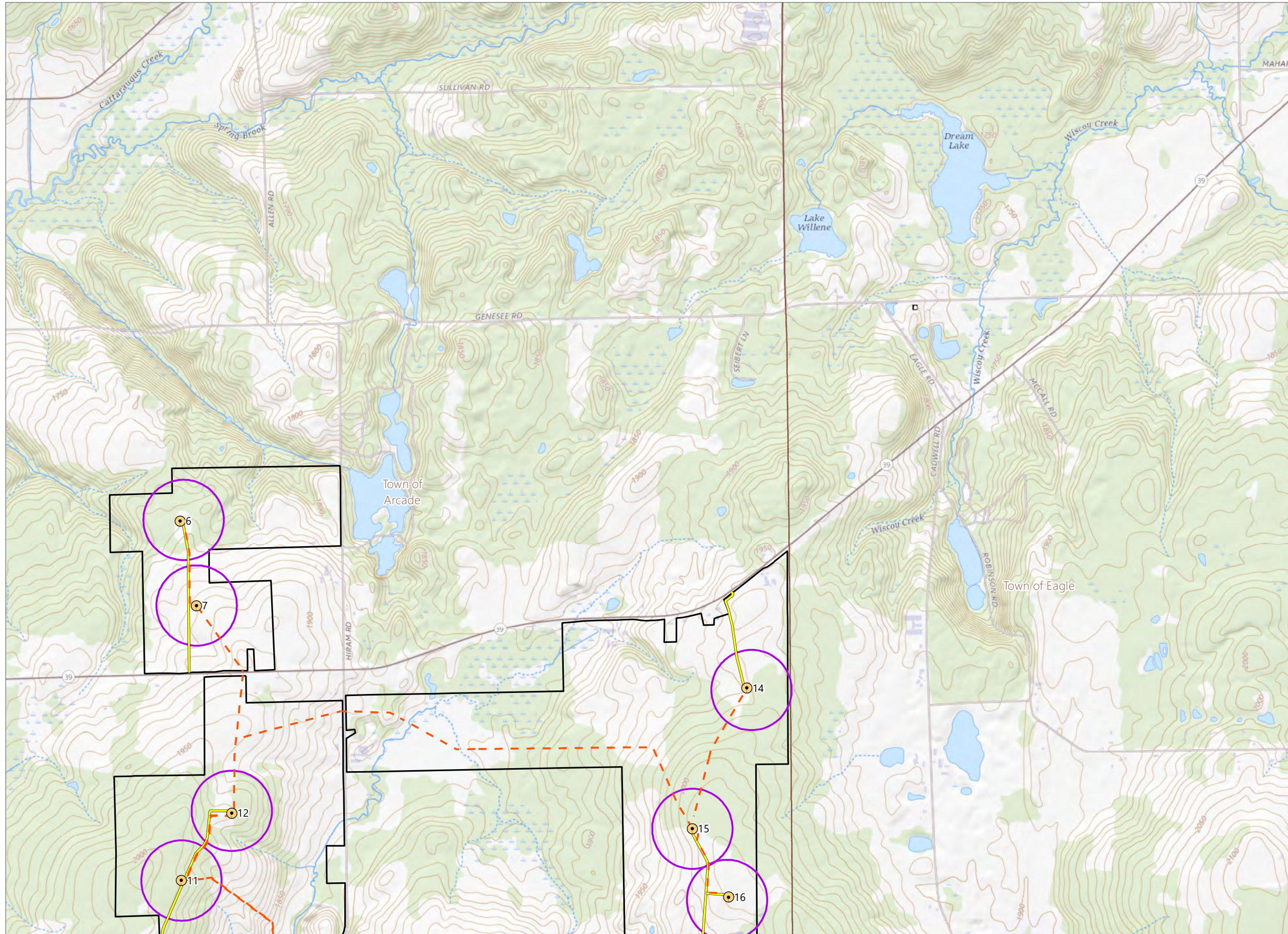


Sheet 2 of 13



Prepared January 23, 2023
Setback circles shown are based on the local laws in effect in each town. For towns without wind laws, circles are shown for ACWE's recommended setback of 1.1 x tip height.
(1) Facility Site Boundary based on County GIS dataset.
Basemap: Esri "USGS Topo" map service

Figure 5: Updated Figure 6-1. Wind Turbine Setbacks

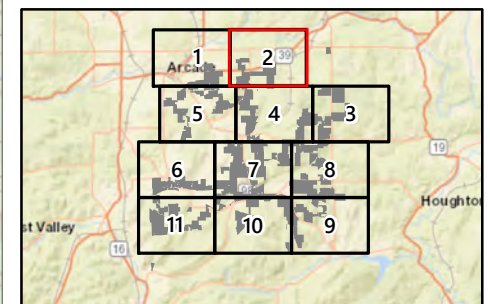


Alle-Catt Wind Farm

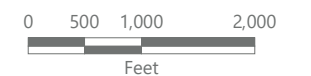
Towns of Arcade, Centerville, Farmersville, Freedom, and Rushford Allegany, Cattaraugus, and Wyoming Counties, New York

**Certificate Amendment
Case No. 17-F-0282**

- WTG Setback
- Town Boundary
- WTG
- Collection Line
- Access Road
- Facility Site (See Note 1)

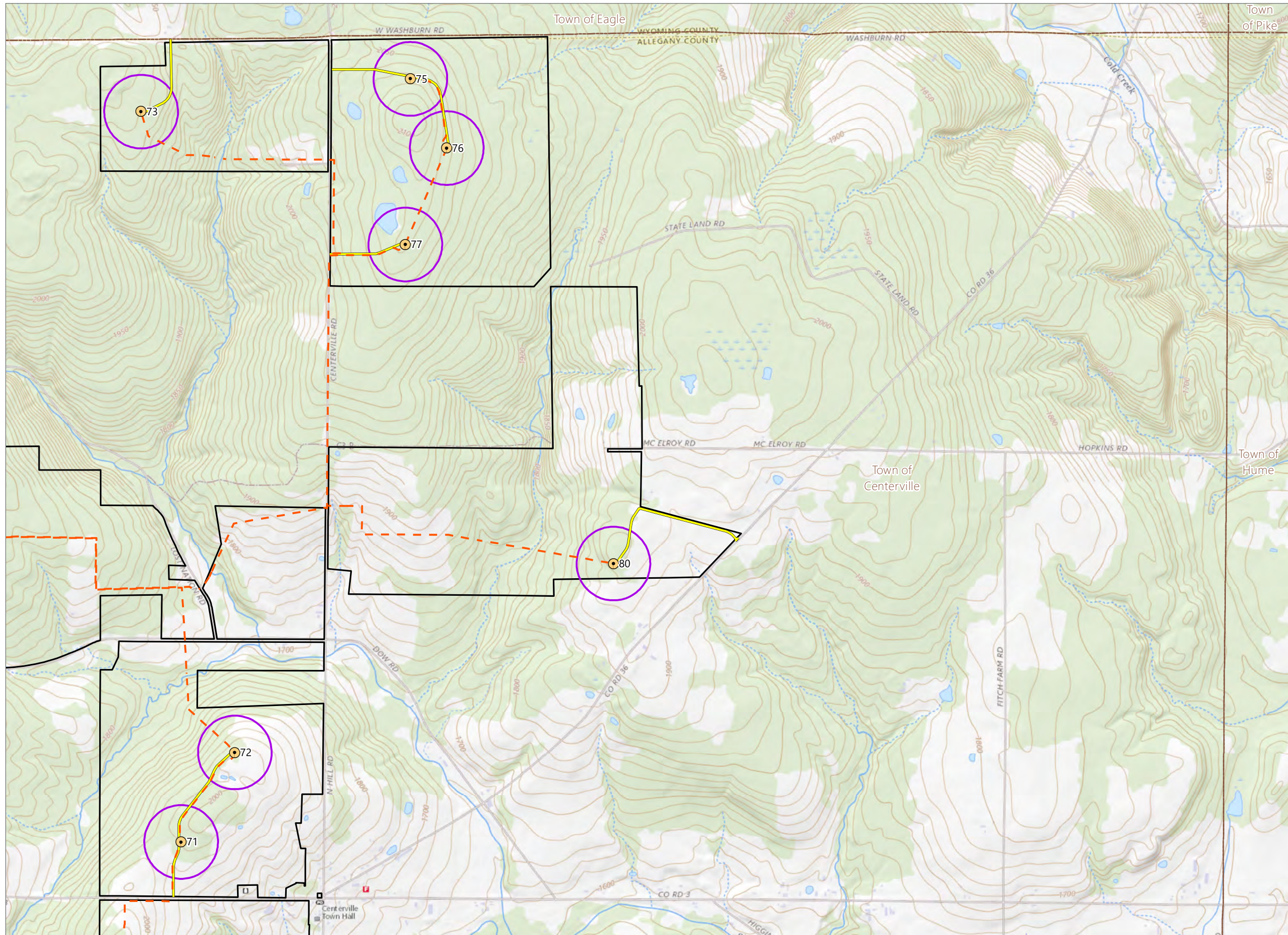


Sheet 3 of 13



Prepared January 23, 2023
Setback circles shown are based on the local laws in effect in each town. For towns without wind laws, circles are shown for ACWE's recommended setback of 1.1 x tip height.
(1) Facility Site Boundary based on County GIS dataset.
Basemap: Esri "USGS Topo" map service

Figure 5: Updated Figure 6-1. Wind Turbine Setbacks

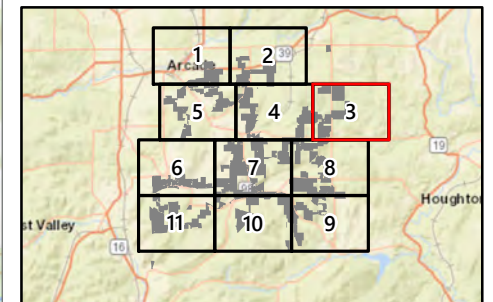


Alle-Catt Wind Farm

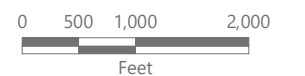
Towns of Arcade, Centerville, Farmersville, Freedom, and Rushford Allegany, Cattaraugus, and Wyoming Counties, New York

**Certificate Amendment
Case No. 17-F-0282**

- WTG Setback
- Town Boundary
- WTG
- Collection Line
- Access Road
- Facility Site (See Note 1)



Sheet 4 of 13

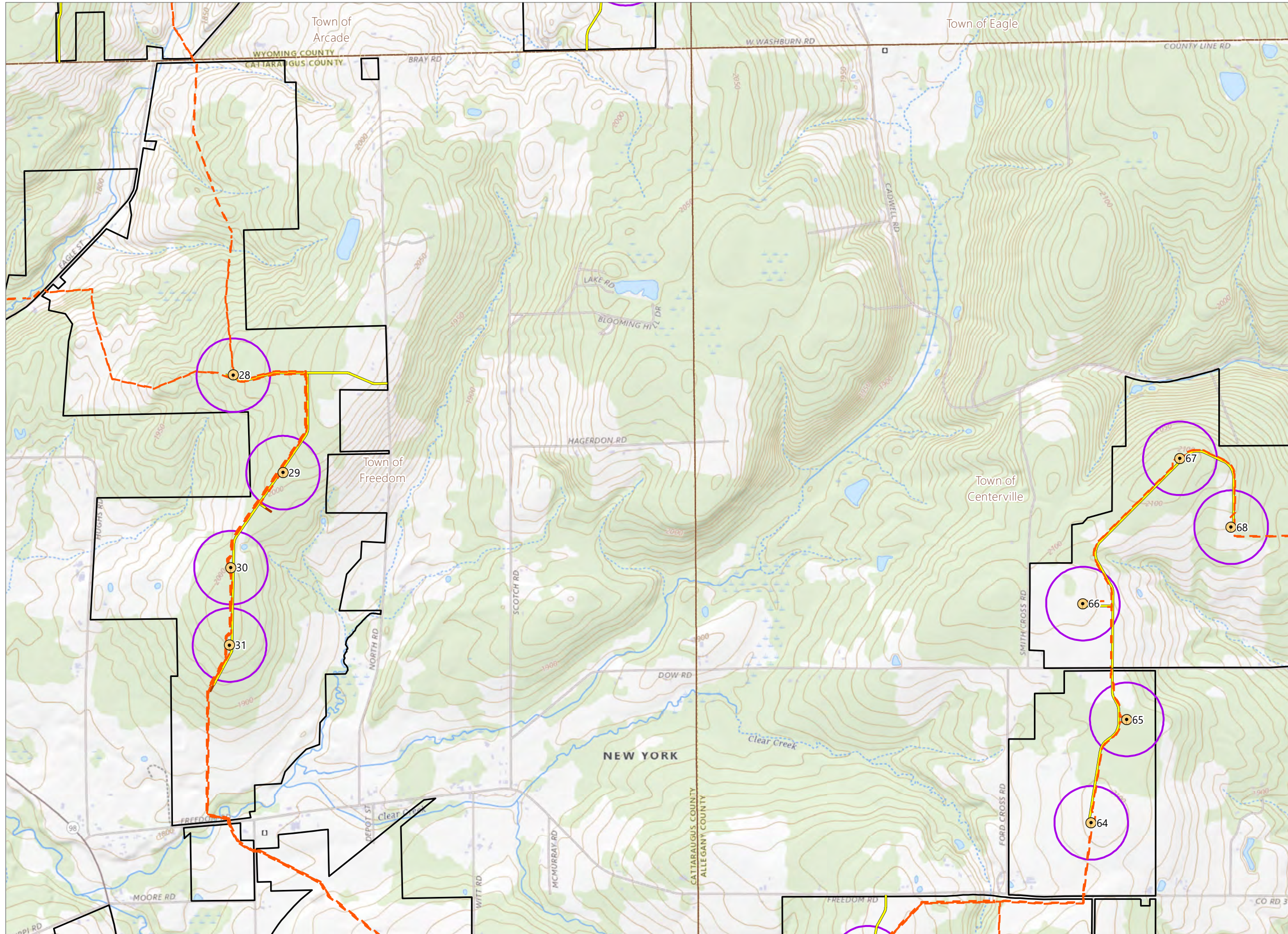


Prepared January 23, 2023

Setback circles shown are based on the local laws in effect in each town. For towns without wind laws, circles are shown for ACWE's recommended setback of 1.1 x tip height.

(1) Facility Site Boundary based on County GIS dataset.
Basemap: Esri "USGS Topo" map service

Figure 5: Updated Figure 6-1. Wind Turbine Setbacks

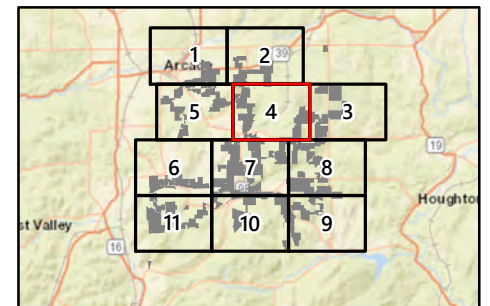


Alle-Catt Wind Farm

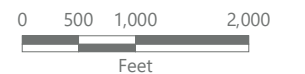
Towns of Arcade, Centerville, Farmersville, Freedom, and Rushford Allegany, Cattaraugus, and Wyoming Counties, New York

Certificate Amendment
Case No. 17-F-0282

- WTG Setback
- Town Boundary
- WTG
- Collection Line
- Access Road
- Identflight Pad
- Facility Site (See Note 1)



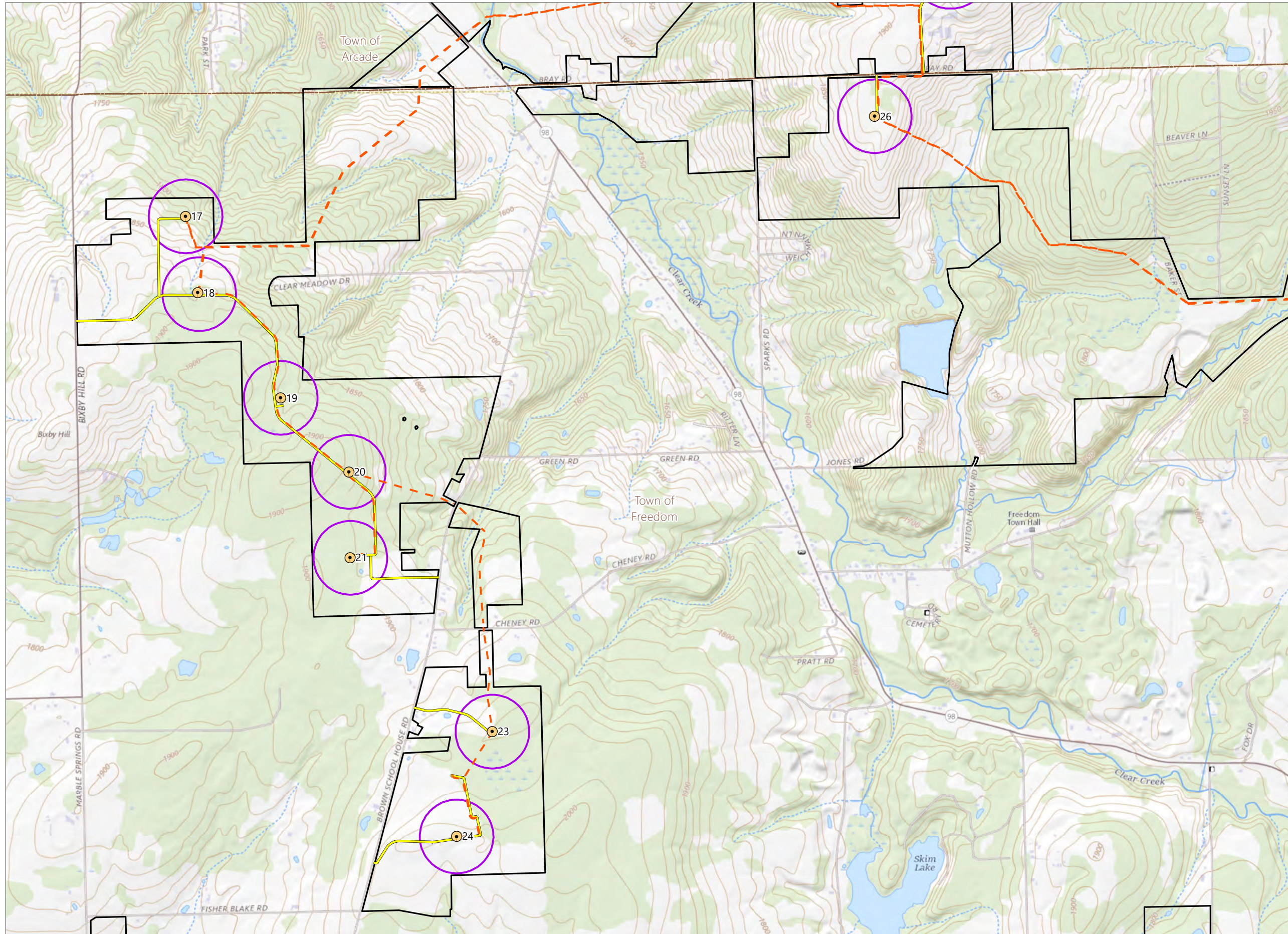
Sheet 5 of 13



Prepared January 23, 2023

Setback circles shown are based on the local laws in effect in each town. For towns without wind laws, circles are shown for ACWE's recommended setback of 1.1 x tip height.

(1) Facility Site Boundary based on County GIS dataset.
Basemap: Esri "USGS Topo" map service

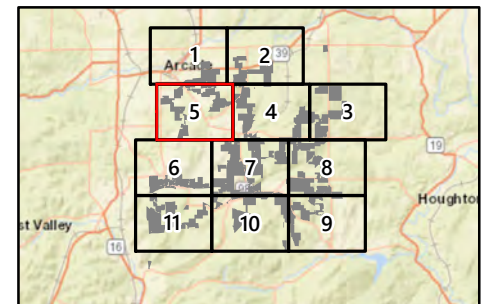


Alle-Catt Wind Farm

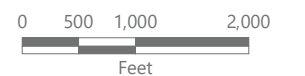
Towns of Arcade, Centerville, Farmersville, Freedom, and Rushford Allegany, Cattaraugus, and Wyoming Counties, New York

Certificate Amendment
Case No. 17-F-0282

- WTG Setback
- Town Boundary
- WTG
- Collection Line
- Access Road
- ADLS Pad
- Facility Site (See Note 1)

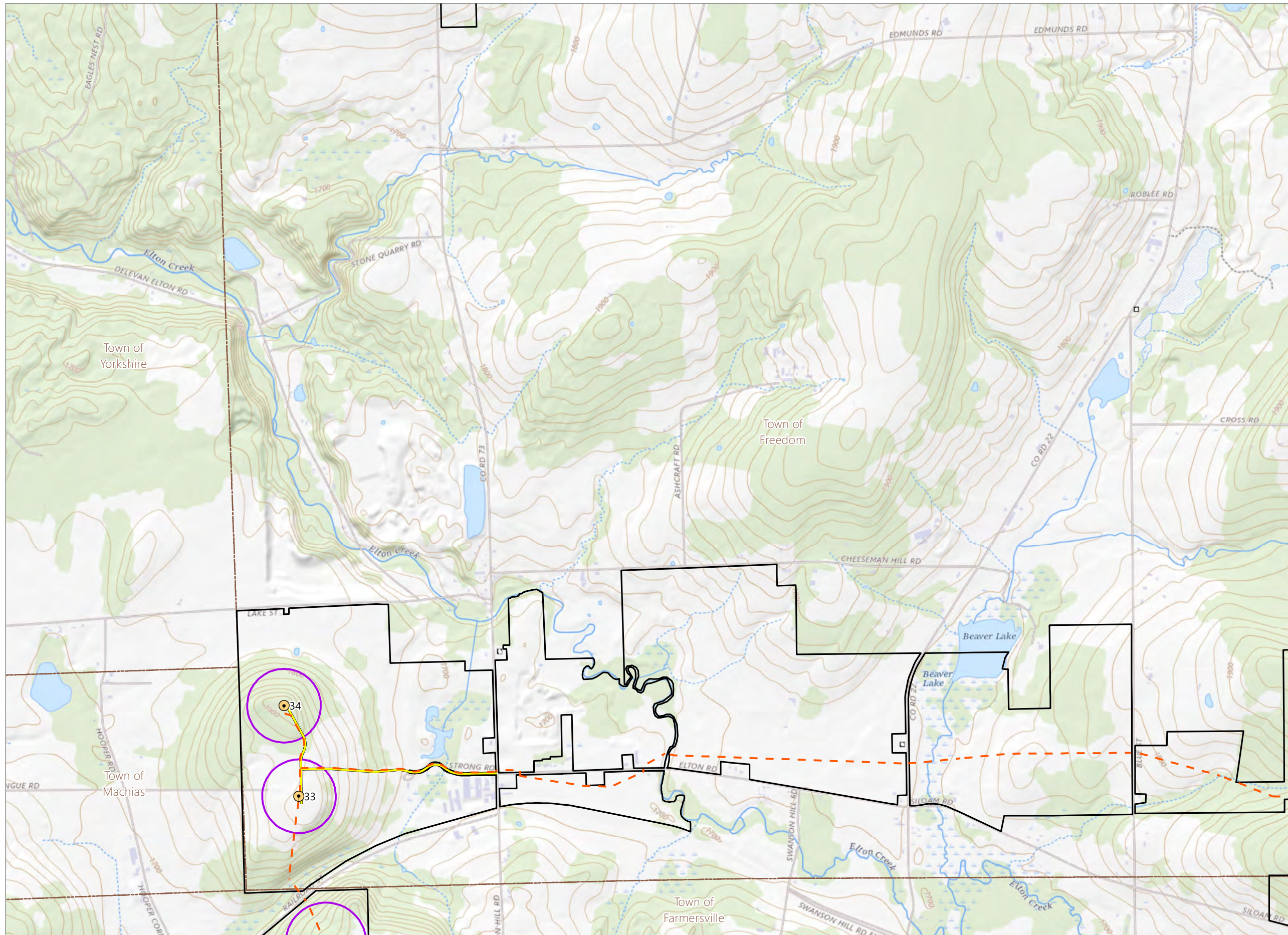


Sheet 6 of 13



Prepared January 23, 2023
Setback circles shown are based on the local laws in effect in each town. For towns without wind laws, circles are shown for ACWE's recommended setback of 1.1 x tip height.
(1) Facility Site Boundary based on County GIS dataset.
Basemap: Esri "USGS Topo" map service

Figure 5: Updated Figure 6-1. Wind Turbine Setbacks

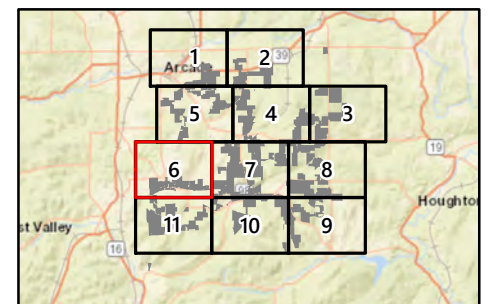


Alle-Catt Wind Farm

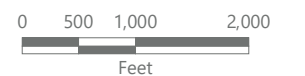
Towns of Arcade, Centerville, Farmersville, Freedom, and Rushford
Allegany, Cattaraugus, and Wyoming
Counties, New York

Certificate Amendment
Case No. 17-F-0282

- WTG Setback
- Town Boundary
- WTG
- Collection Line
- Access Road
- Facility Site (See Note 1)

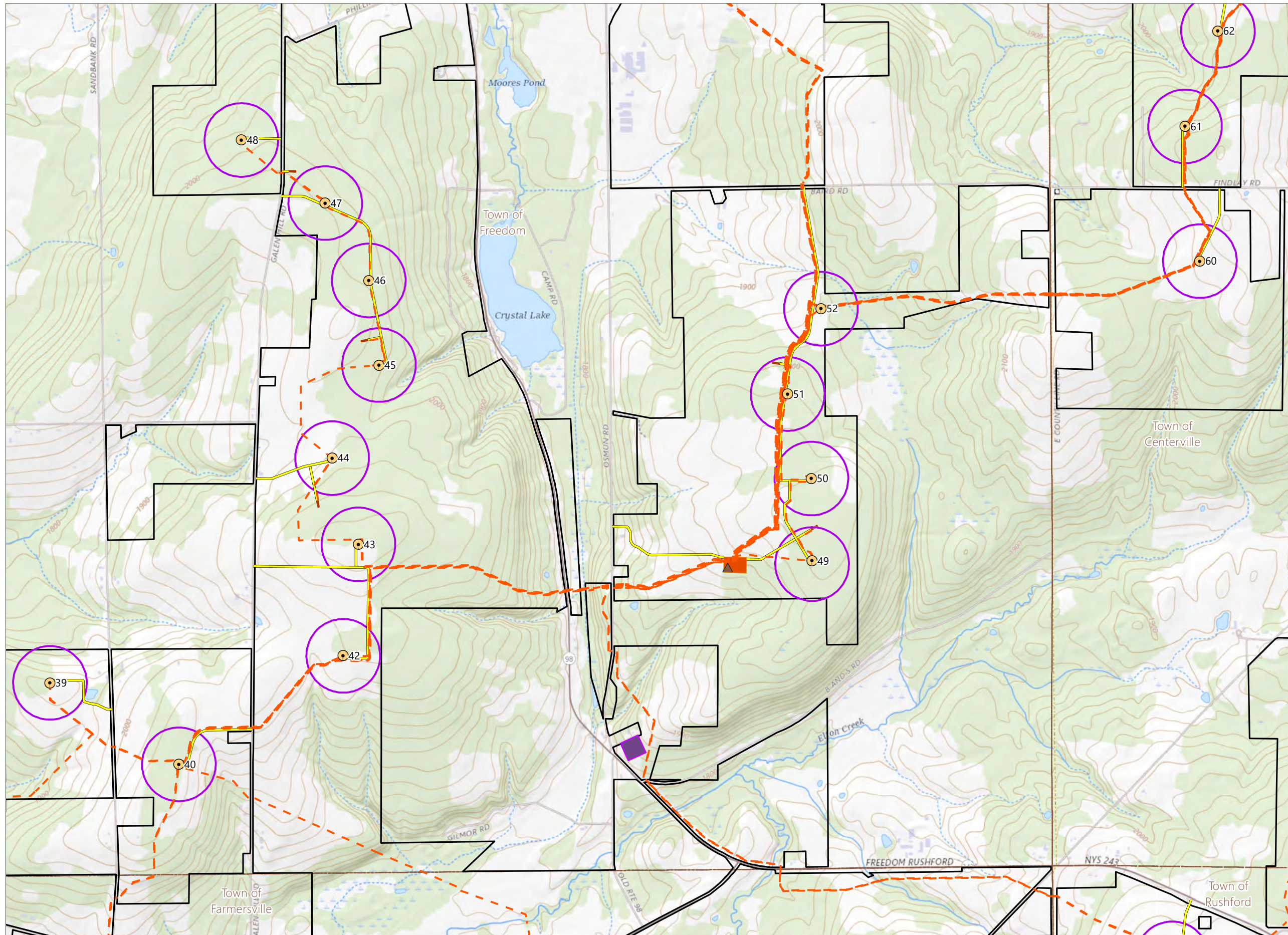


Sheet 7 of 13



Prepared January 23, 2023
Setback circles shown are based on the local laws in effect in each town. For towns without wind laws, circles are shown for ACWE's recommended setback of 1.1 x tip height.
(1) Facility Site Boundary based on County GIS dataset.
Basemap: Esri "USGS Topo" map service

Figure 5: Updated Figure 6-1. Wind Turbine Setbacks

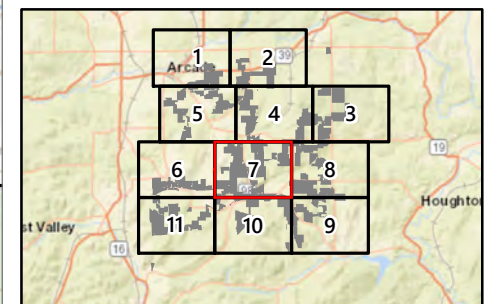


Alle-Catt Wind Farm

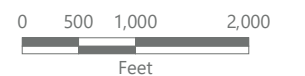
Towns of Arcade, Centerville, Farmersville, Freedom, and Rushford
Allegany, Cattaraugus, and Wyoming
Counties, New York

Certificate Amendment
Case No. 17-F-0282

- WTG Setback
- Town Boundary
- WTG
- Microwave Tower
- Collection Line
- Access Road
- Collection Substation
- O&M Building
- Identifiight Pad
- Facility Site (See Note 1)



Sheet 8 of 13



Prepared January 23, 2023

Setback circles shown are based on the local laws in effect in each town. For towns without wind laws, circles are shown for ACWE's recommended setback of 1.1 x tip height.

(1) Facility Site Boundary based on County GIS dataset.
Basemap: Esri "USGS Topo" map service